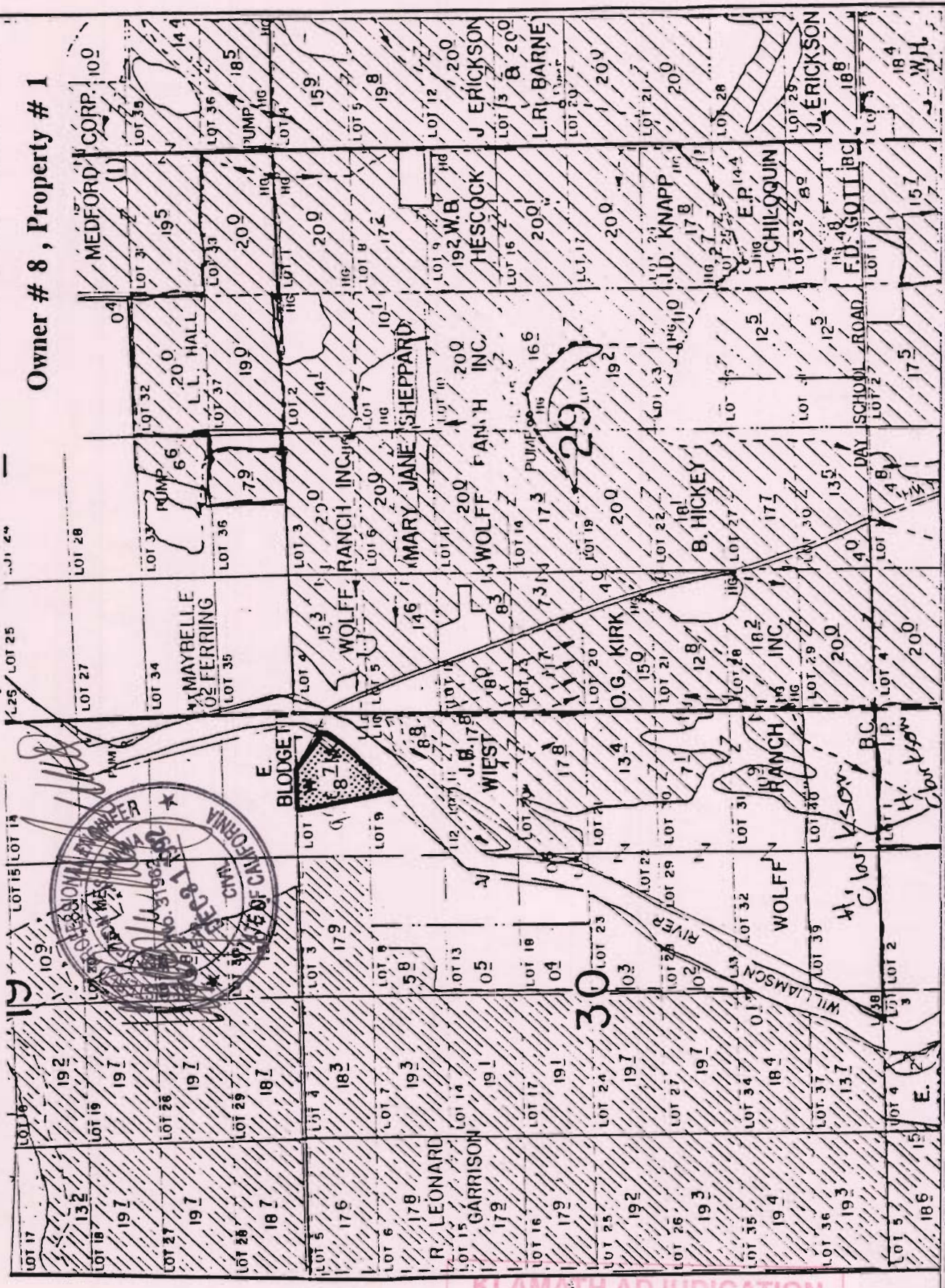


TOWNSHIP 35 SOUTH, RANGE 7 EAST, W. M.

Owner # 8, Property # 1



KLAMATH ADJUDICATION
234 019



By: Natural Resources Consulting Engineers Inc.
1250 Addison St., Suite 204
Berkeley, Ca. 94702
Berkeley (510) 841-7814

Practically Irrigable Acreage



Presently Irrigated Land

