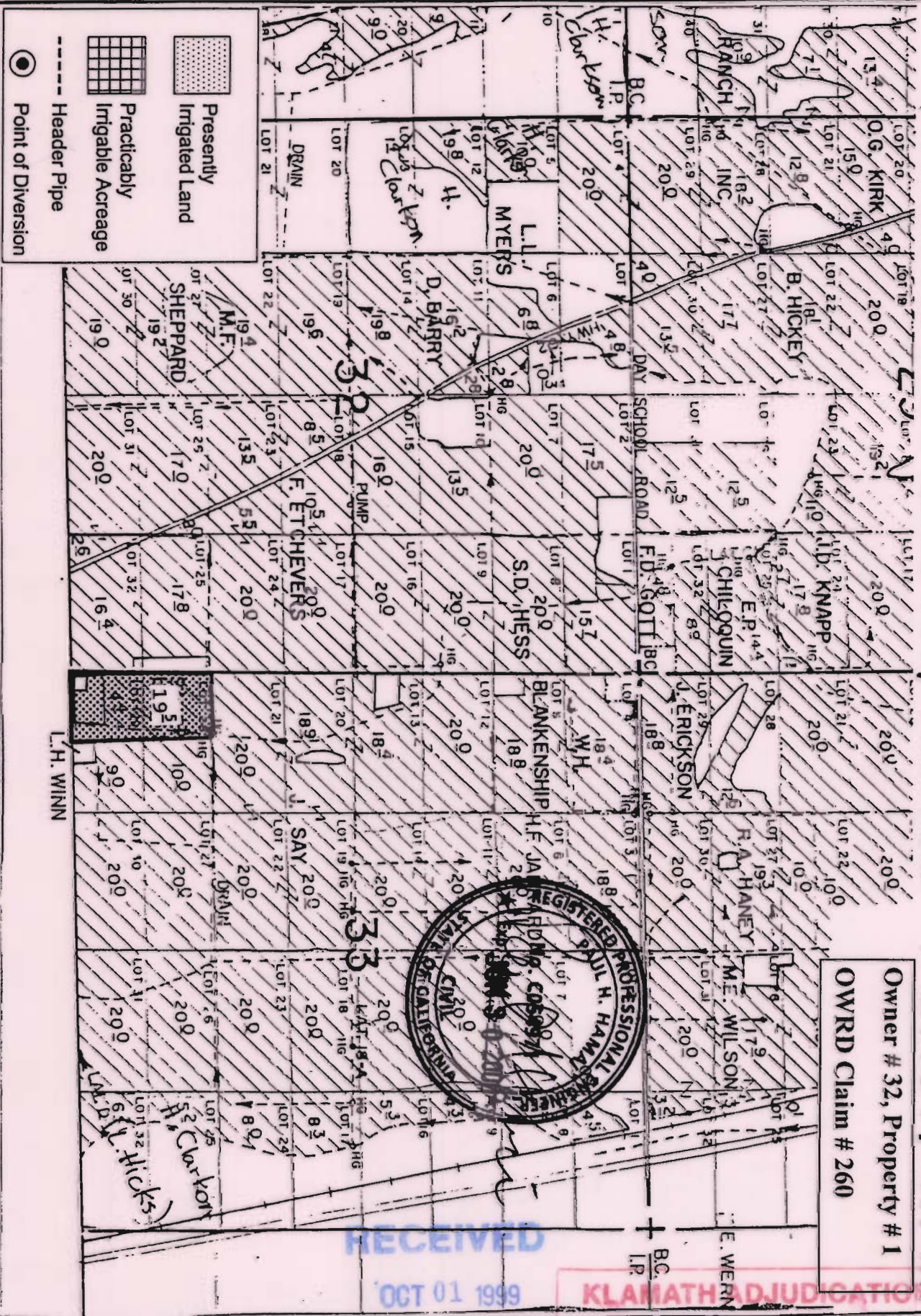


TOWNSHIP 35 SOUTH, RANGE 7 EAST, W. M.



Owner # 32, Property # 1
 OWRD Claim # 260

RECEIVED
 OCT 01 1999

KLAMATH ADJUDICATION
 CLAIM # 260

WATER RESOURCES DEPT.
 SALEM, OREGON

PAGE # 73

By: Natural Resources Consulting Engineers Inc.
 1250 Addison St., Suite 204
 Berkeley, Ca. 94702
 Berkeley (510) 841-7814

