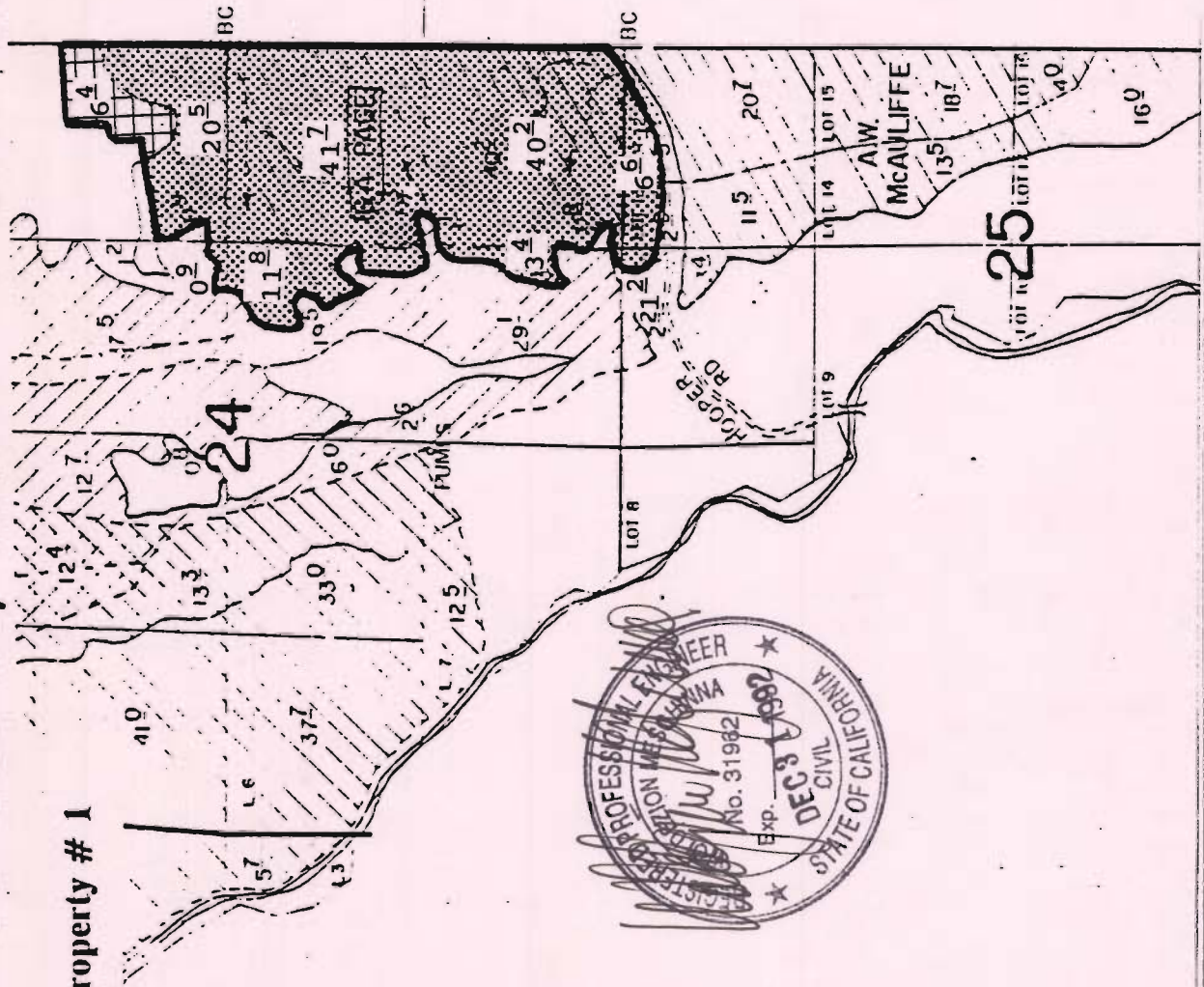


TOWNSHIP 34 SOUTH, RANGE 7 1/2 EAST W.M.

Owner # 35, Property # 1



KLAMATH ADJUDICATION
 CLAIM # 264 PAGE # 023



By: Natural Resources Consulting Engineers Inc.
 1250 Addison St., Suite 204
 Berkeley, Ca. 94702
 Berkeley (510)841-7814

Practically Irrigable Acreage



Presently Irrigated Land

