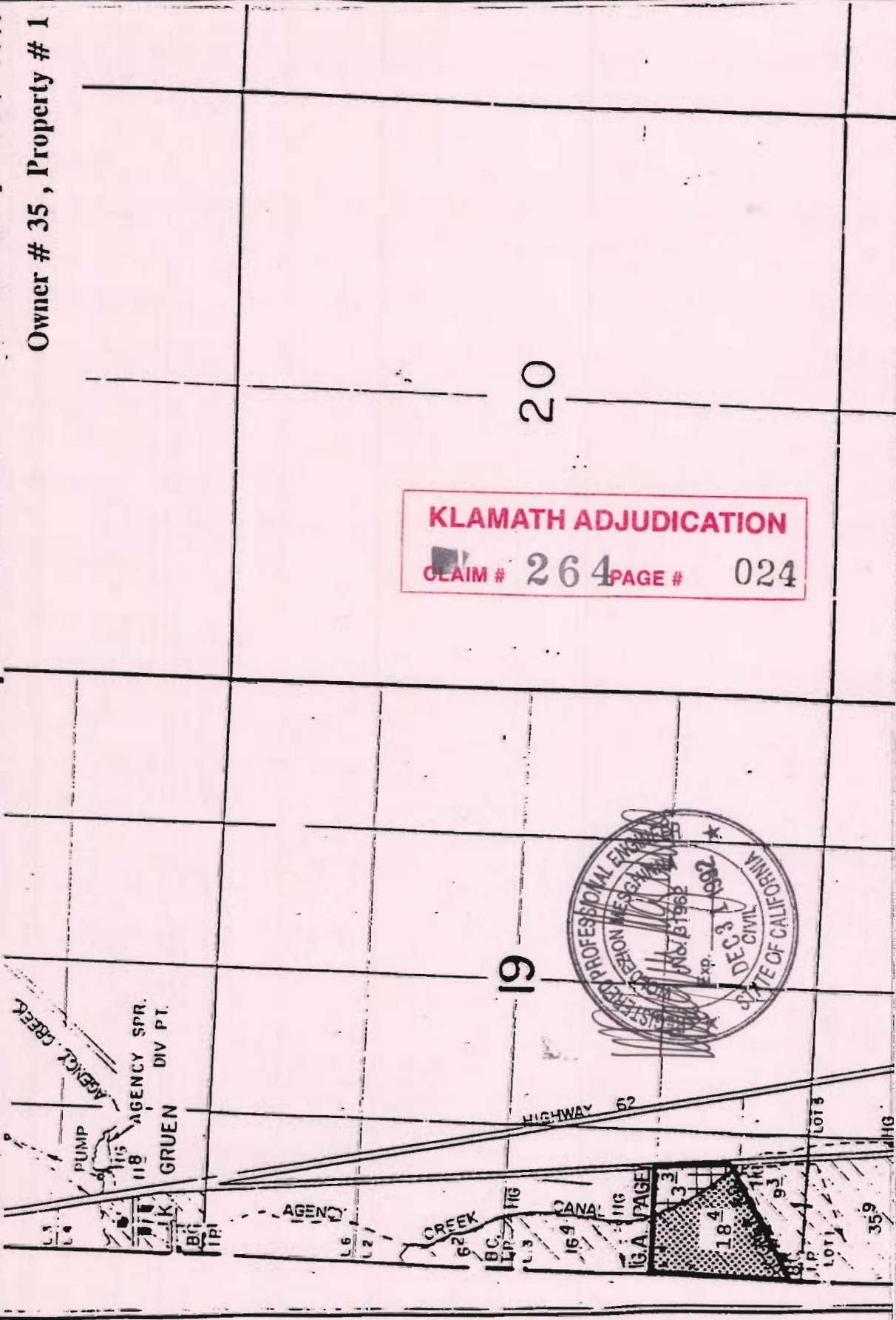


TOWNSHIP 34 SOUTH, RANGE 7 EAST, W. M.

Owner # 35, Property # 1



Presently Irrigated Land



Practicably Irrigable Acreage

By: Natural Resources Consulting Engineers Inc.
1250 Addison St., Suite 204
Berkeley, Ca. 94702
Berkeley (510)841-7814

