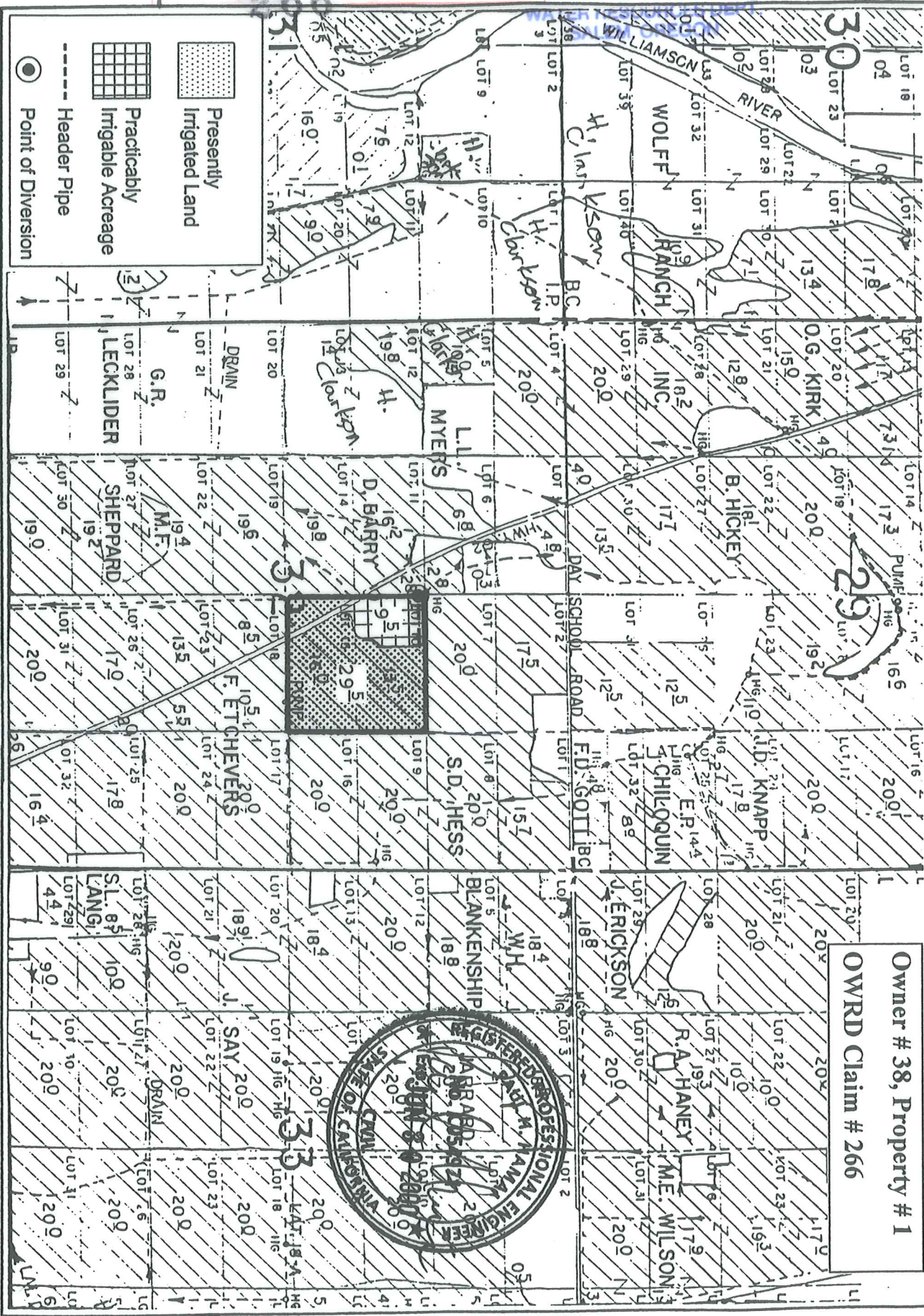


RECEIVED
 OCT 01 1999

TOWNSHIP 35 SOUTH, RANGE 7 EAST, W. M.



Owner # 38, Property # 1
 OWRD Claim # 266

By: Natural Resources Consulting Engineers Inc.
 1250 Addison St., Suite 204
 Berkeley, Ca. 94702
 Berkeley (510)841-7814

