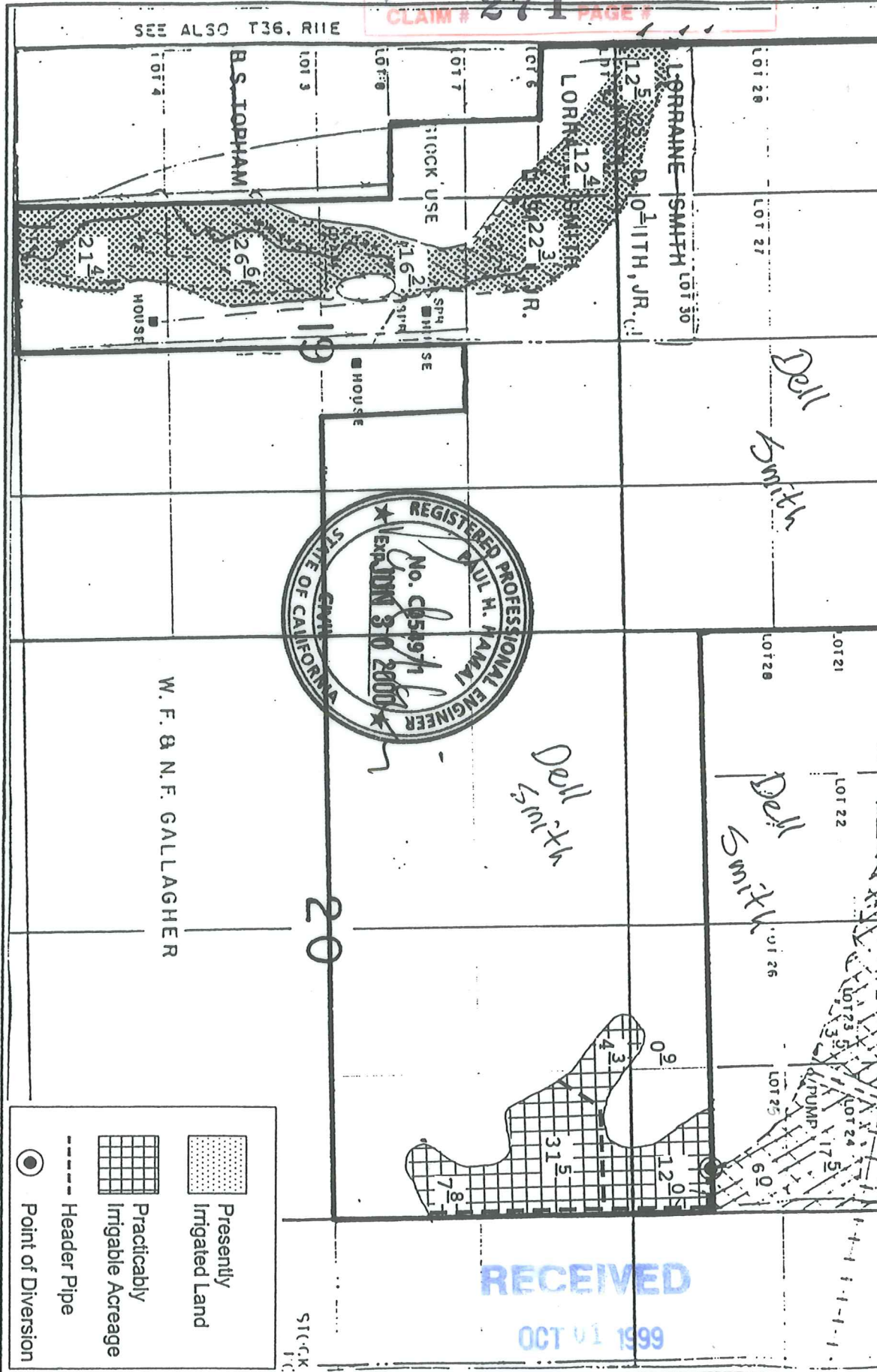


TOWNSHIP 36 SOUTH, RANGE 12 EAST, W. M.

Owner # 43, Property # 1
 OWRD Claim # 271

RECEIVED
 OCT 01 1999

WATER RESOURCES DEPT.
 SALEM, OREGON



SEE ALSO T36, R11E

W. F. & N. F. GALLAGHER

By: Natural Resources Consulting Engineers Inc.
 1250 Addison St., Suite 204
 Berkeley, Ca. 94702
 Berkeley (510)841-7814

