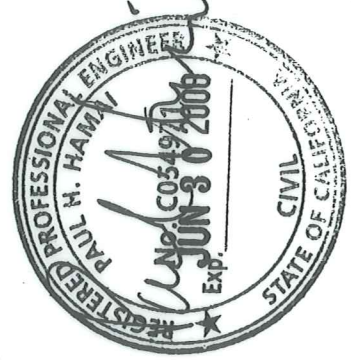


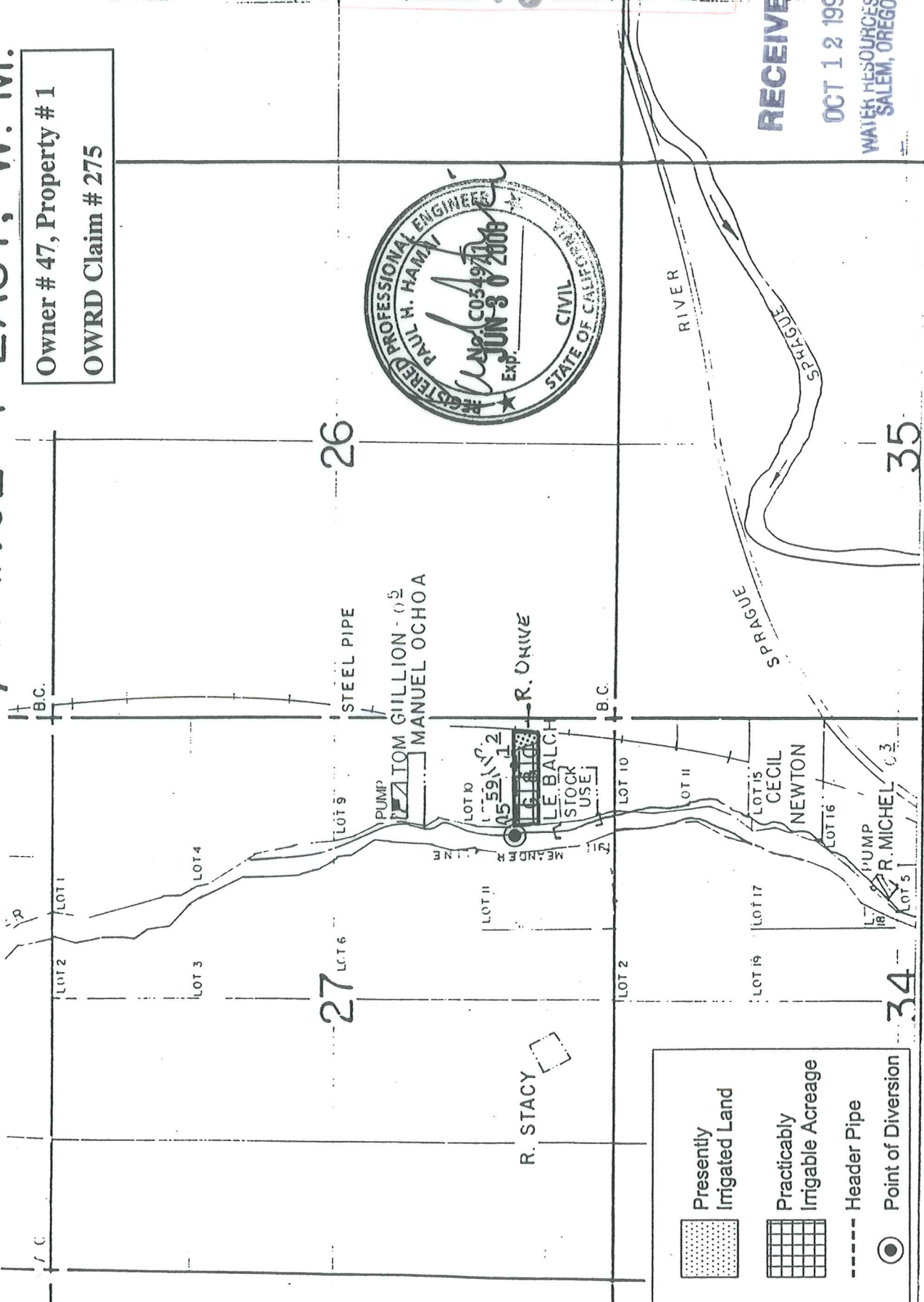
TOWNSHIP 34 SOUTH, RANGE 7 EAST, W. M.

Owner # 47, Property # 1
 OWRD Claim # 275

KLAMATH ADJUDICATION
 CLAIM # 275 PAGE 1 77



RECEIVED
 OCT 12 1999
 WATER RESOURCES DEPT.
 SALEM, OREGON



	Presently Irrigated Land
	Practicably Irrigable Acreage
	Header Pipe
	Point of Diversion

NRCE
 By: Natural Resources Consulting Engineers Inc.
 1250 Addison St., Suite 204
 Berkeley, Ca. 94702
 Berkeley (510)841-7814