






TS 37 S, R 4W, Section 19 SW TL 6700

JACKSON COUNTY  
WATERMASTER

**Legend**

-  TL 6700
-  Well L-110048
-  Proposed Place of Use
-  Sections
-  Quarter Quarter Sections

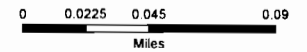
Irrigation of 17 acres  
in the SE/SW of Section 19

POA is 1149 ft North  
and 988 ft East from  
SE corner Section 19

RECEIVED BY OWRD

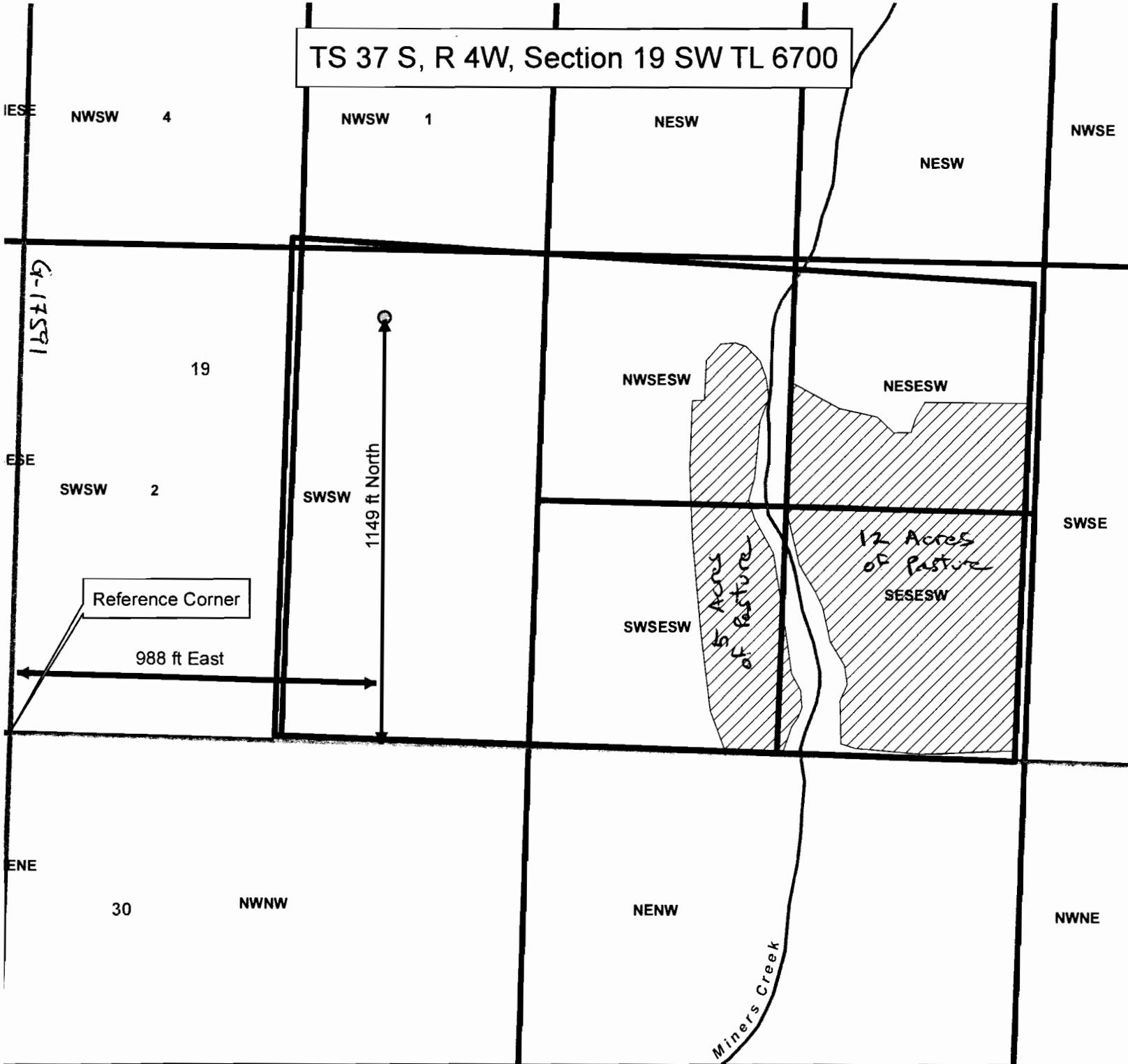
OCT 22 2012

SALEM, OR



This map is based on a digital database compiled by Jackson County from a variety of sources. Jackson County cannot accept responsibility for errors, omissions, or positional accuracy. There are no warranties, expressed or implied.

Date: 10/17/2012 generc.mxd, HaynesSL



1 inch = 364 feet