

"SCALE"

1" = 400'



S.E. 1/4 SEC. 21 T.2S. R.1E. W.M.
CLACKAMAS COUNTY

D. L. C.
EDWARD A. WILSON NO. 72

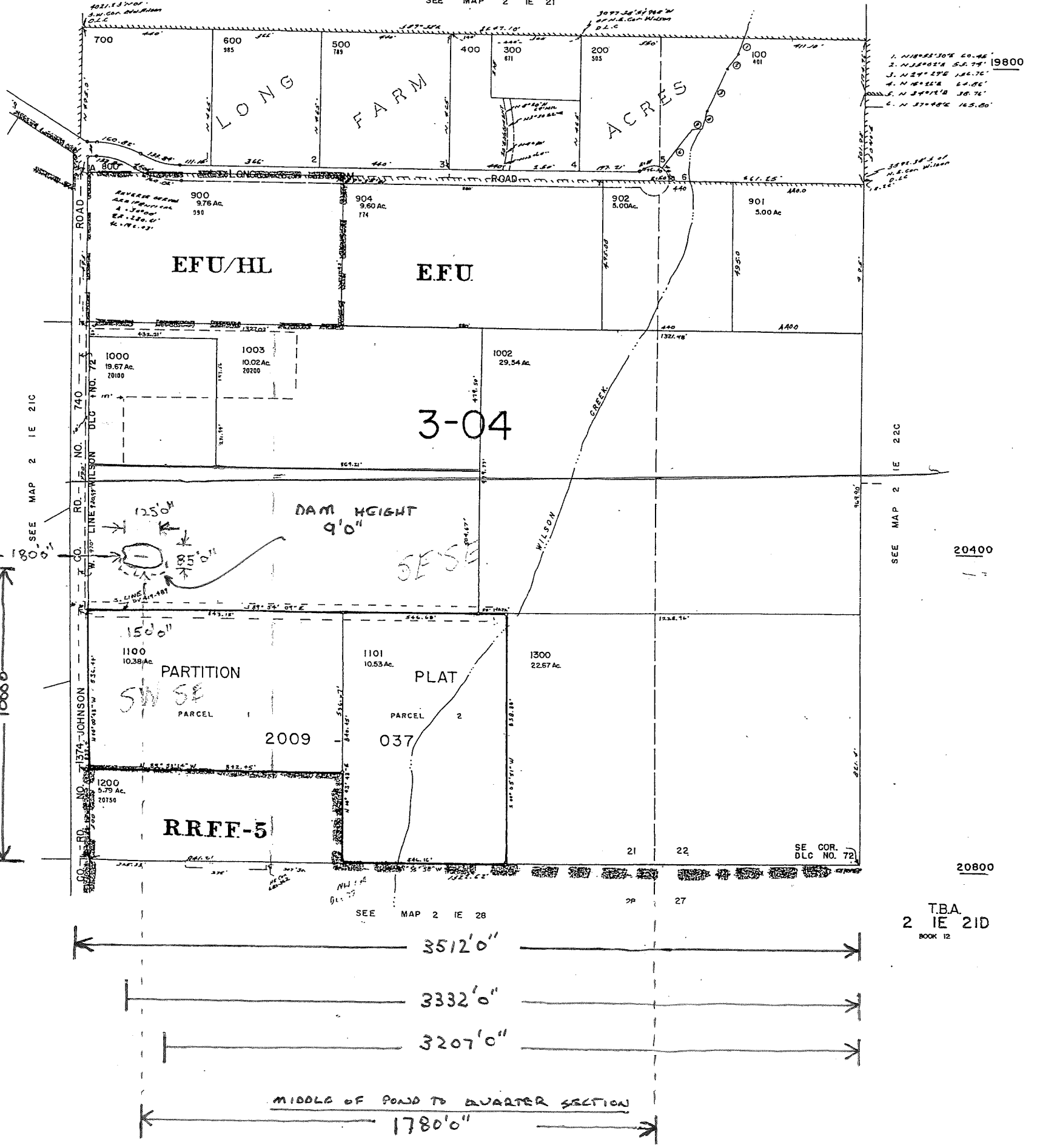
2 IE 21D
CANCELLED TAX LOTS
1001
903

This map was prepared for
assessment purpose only.

1" = 200'
700
SEE MAP 2 IE 21

1300

300



1. N 118° 55' 30" E 50.46'
 2. N 23° 02' 24" E 55.75'
 3. N 24° 25' 24" E 101.76'
 4. N 10° 52' 28" E 14.86'
 5. N 34° 17' 0" E 38.76'
 6. N 37° 48' 0" E 165.80'

19800

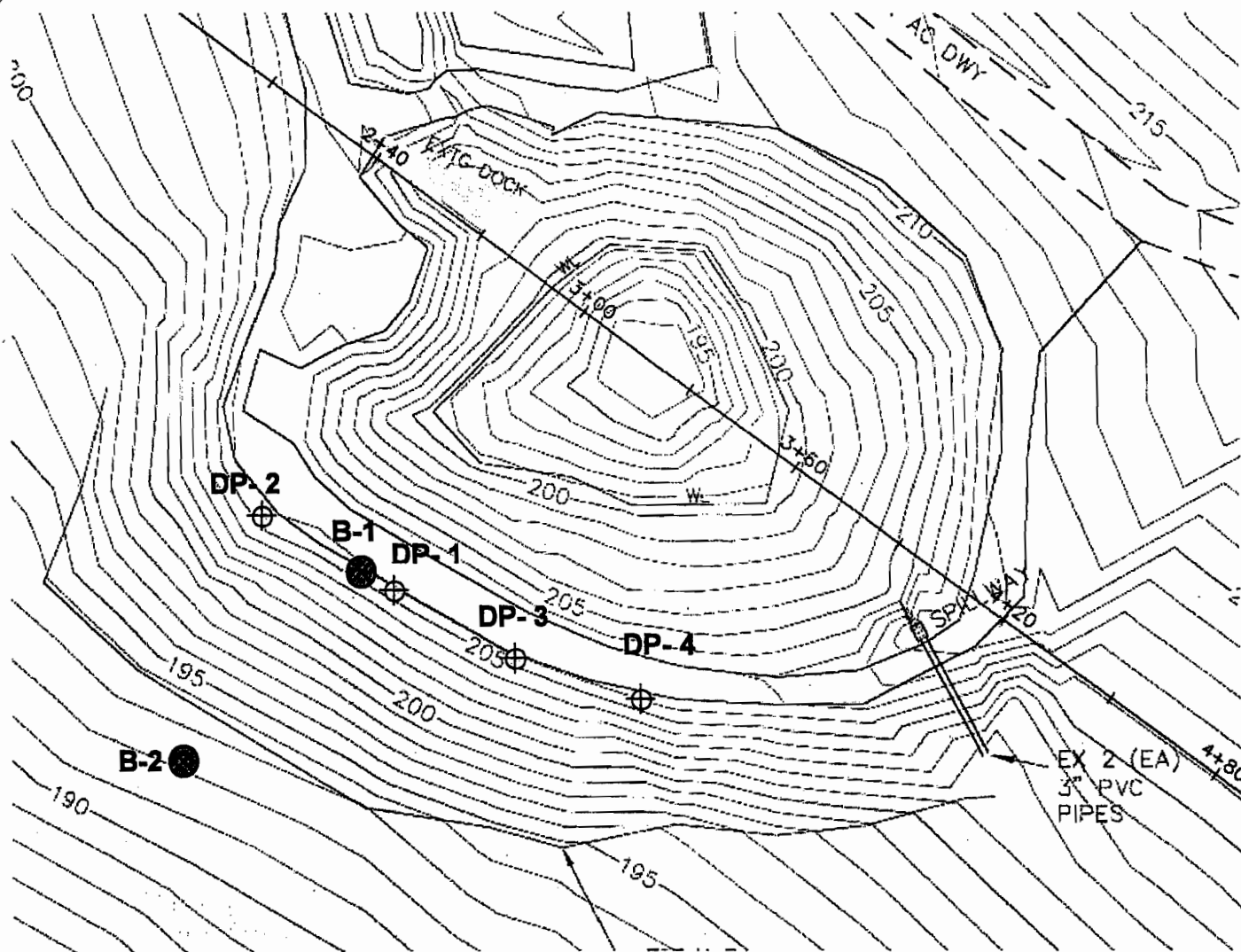
SEE MAP 2 IE 22C
 20400

20800
 T.B.A.
 2 IE 21D
 BOOK 12

S.E. 1/4 SEC. 21
 T.2S. R.1E. W.M. CLACKAMAS COUNTY
 * QUARTER / QUARTER
 SW/SE

RECEIVED
 OCT 23 2012
 WATER RESOURCES DEPT
 SALEM, OREGON

FIGURE 2: SITE PLAN WITH EXPLORATION LOCATIONS



- Legend:**
- ⊕ DP-1, Drive Probe Locations
 - Machine/ Hand Auger Drilled Boring Location, B-1

RECEIVED

OCT 23 2012

WATER RESOURCES DEPT
SALEM, OREGON



Image Source: BMP Design, LLC

Approximate Scale: 1 inch = 40 feet



**Limited Geotechnical Engineering
Evaluation
Existing Dam Embankment
for Irrigation Pond
20100 Southwest Johnson Road
West Linn, Oregon**

**Report No.
12-022-1**

**Date:
August 14, 2012**

