

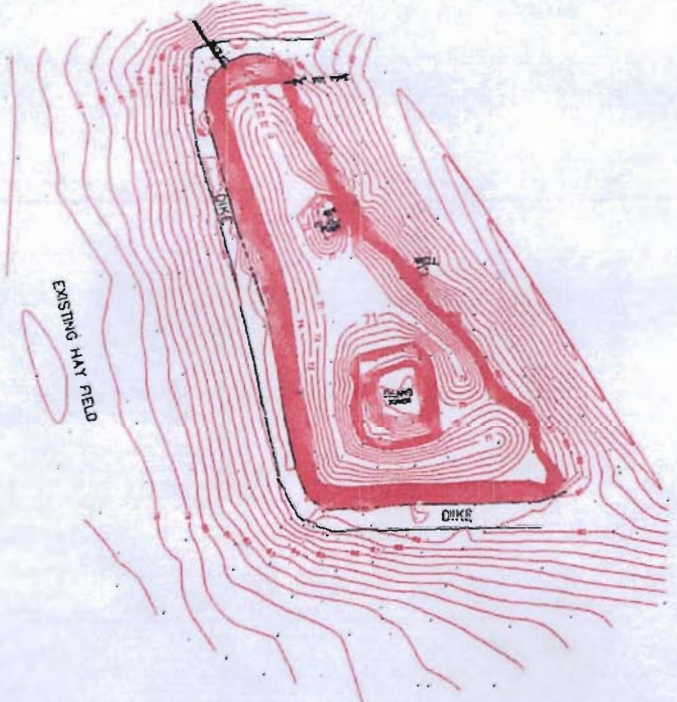
R-87847

HILTON POND
T36S R2W SE1/4 SECTION 27 WM

SURVEY BY: LR SMITH
541-826-2509
18 JAN 2012
SCALE 1" = 200'

SE CORNER DLCS2
N89°59'24"W
284.90'
NE CORNER DLCS3
S89°59'24"W
284.90'

WEST



EAST

BEAR CREEK RECEIVED BY OWRD
SALEM, OR

OCT 25 2012

FILED SURVEY#13824

REGISTERED
PROFESSIONAL
LAND SURVEYOR
Lloyd R. Smith
OREGON
JULY 10, 1982
LLOYD R. SMITH
No. 2011

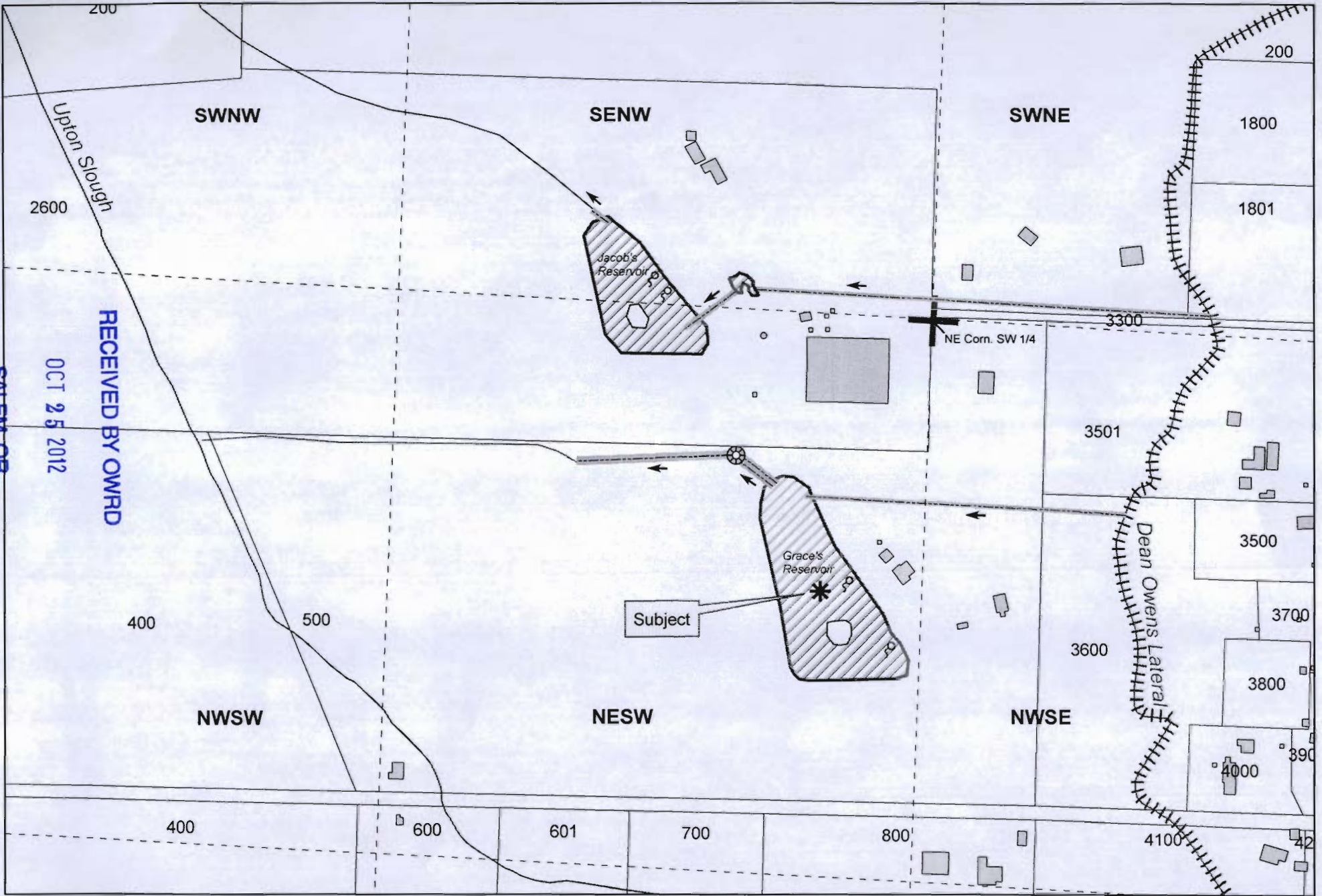
Exp 6/30/12



Submitted By
MATT ROPP
LAND USE CONSULTING, INC.

R-87897
SALEM, OR

RECEIVED BY OWRD
OCT 25 2012



SITE PLAN - GRACE'S RESERVOIR
 ALTERNATE RESERVOIR PERMIT APP
 HILTON FARM IRRIGATION PONDS
 362W27 TL 500 NESW

	Quarter Quarter Section		Tax Lot
	Spring		Reservoir
	Pipe		Building
	Irrigation Canal		

* RESERVOIR CENTER: 670' South & 265' West of the NE corner of the SW Quarter

MAP SCALE
1" = 300'

MGR102312

**MATT ROPP LAND
USE CONSULTING**