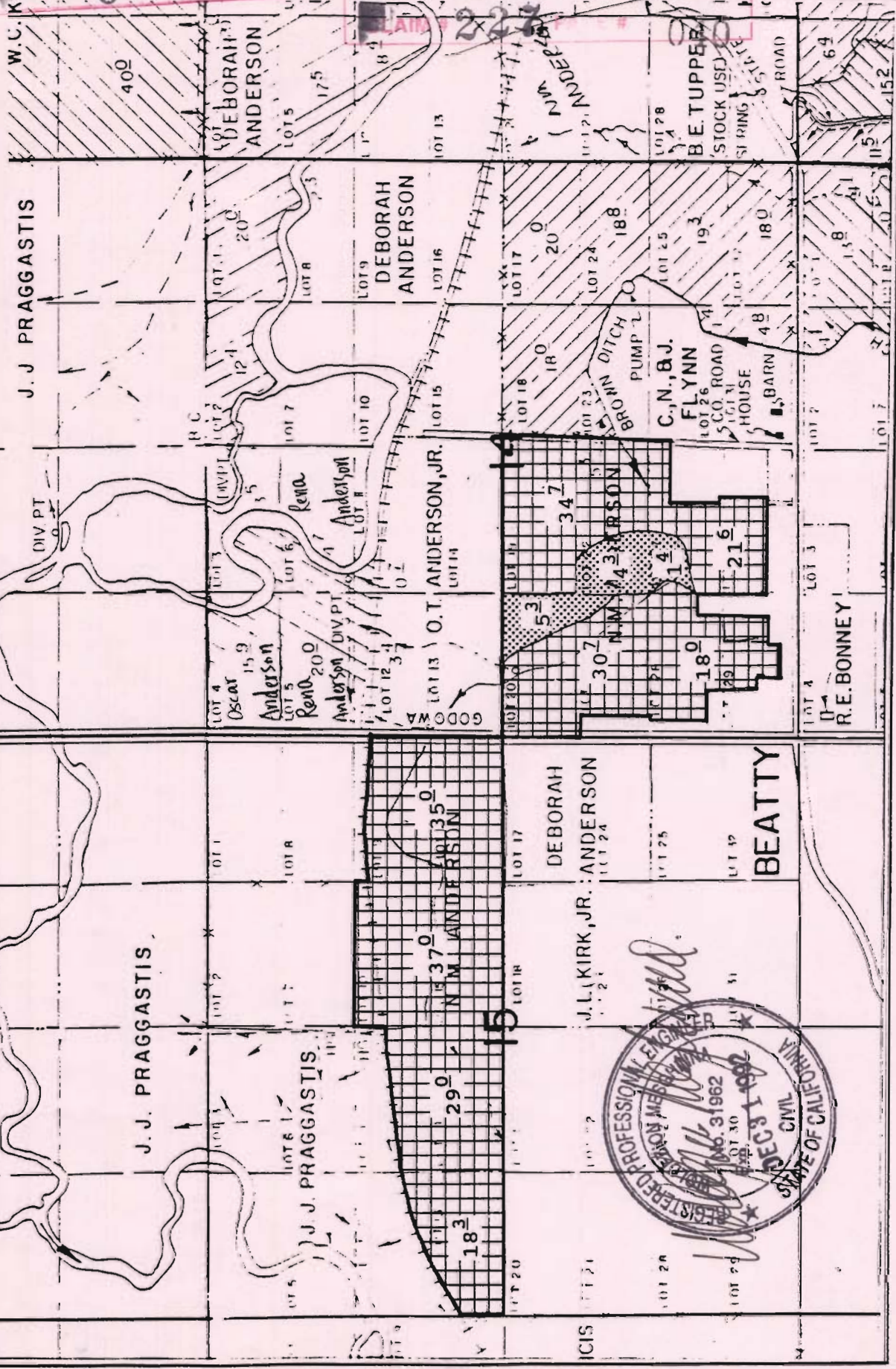


# TOWNSHIP 36 SOUTH, RANGE 12 EAST, W. M.

Owner # 2, Property # 2



WATH ADJUDICATION

676 PAGE #

009

WATH ADJUDICATION



Presently Irrigated Land



Practically Irrigable Acreage

By: Natural Resources Consulting Engineers Inc.  
1250 Addison St., Suite 204  
Berkeley, Ca. 94702  
Berkeley (510)841-7814

