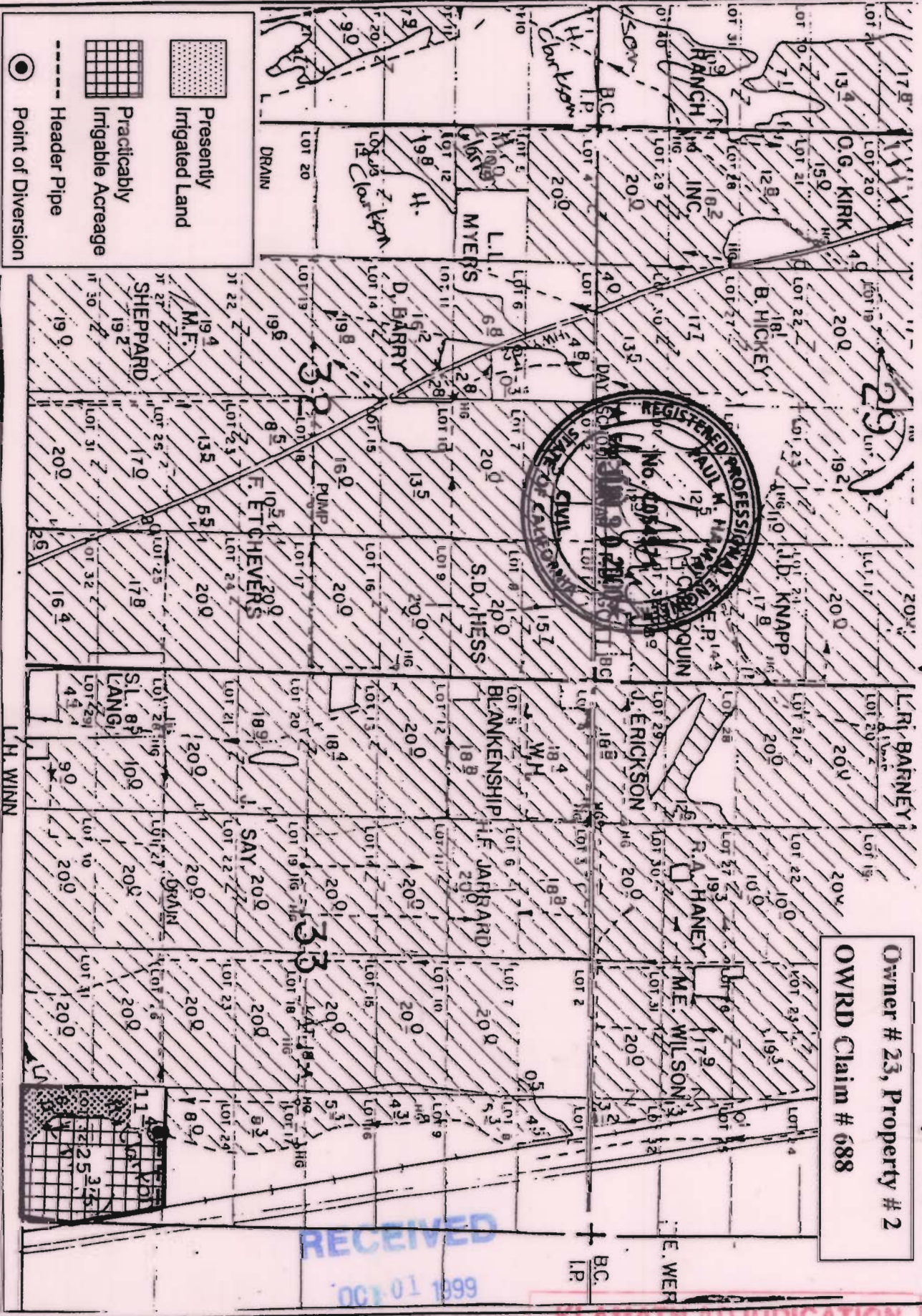


TOWNSHIP 35 SOUTH, RANGE 7 EAST, W. M.



Owner # 23, Property # 2
 OWRD Claim # 688

RECEIVED
 OCT 01 1999
 WATER RESOURCES DEPT.
 SALEM, OREGON
 KLAMATH ADJUDICATION
 CLAIM # 88 PAGE # 64

By: Natural Resources Consulting Engineers Inc.
 1250 Addison St., Suite 204
 Berkeley, Ca. 94702
 Phone: (415) 863-7814

