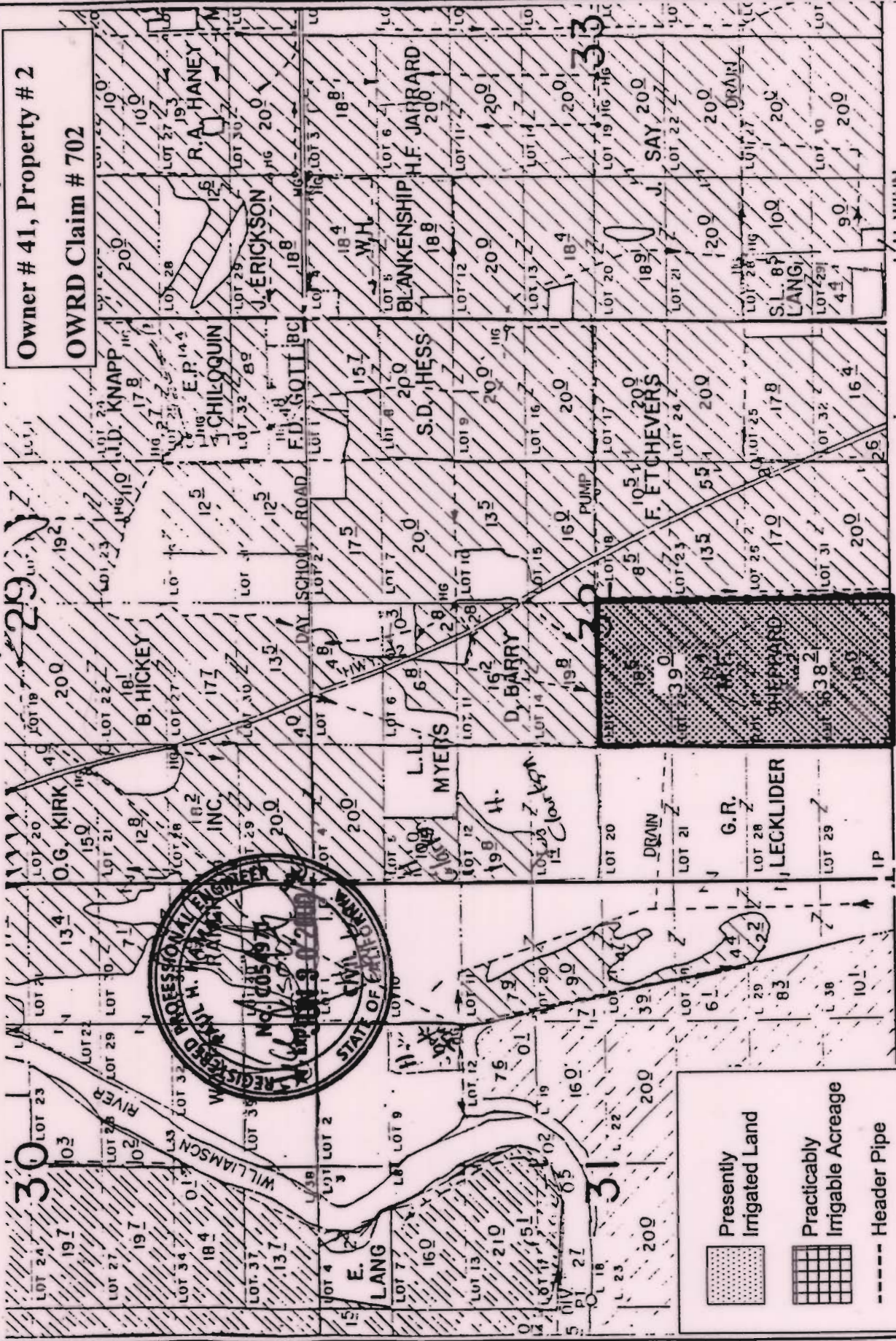
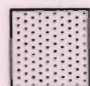





TOWNSHIP 35 SOUTH, RANGE 7 EAST, W. M.



Owner # 41, Property # 2
 OWRD Claim # 702

Legend

-  Presently Irrigated Land
-  Practicably Irrigable Acreage
-  Header Pipe
-  Point of Diversion



By: Natural Resources Consulting Engineers Inc.
 1250 Addison St., Suite 204
 Berkeley, Ca. 94702
 Berkeley (510)841-7814

CLAIM # 702 PAGE # 35
 Klamath Adjudication

RECEIVED

OCT 01 1989

WATER RESOURCES DEPT.
 SALEM, OREGON