

RECEIVED BY OWRD

NOV 20 2012

SALEM, OR

Well #1. (Lot 113) is 810' South and 495' East from center of corner, Sec 21

Well #2. (Lot 114) is 906' South and 860' East from center of corner, Sec 21

FIRST 15 COR. 1/4

Hatching for nursery operations

T. 175, R. 2 W Sec 21

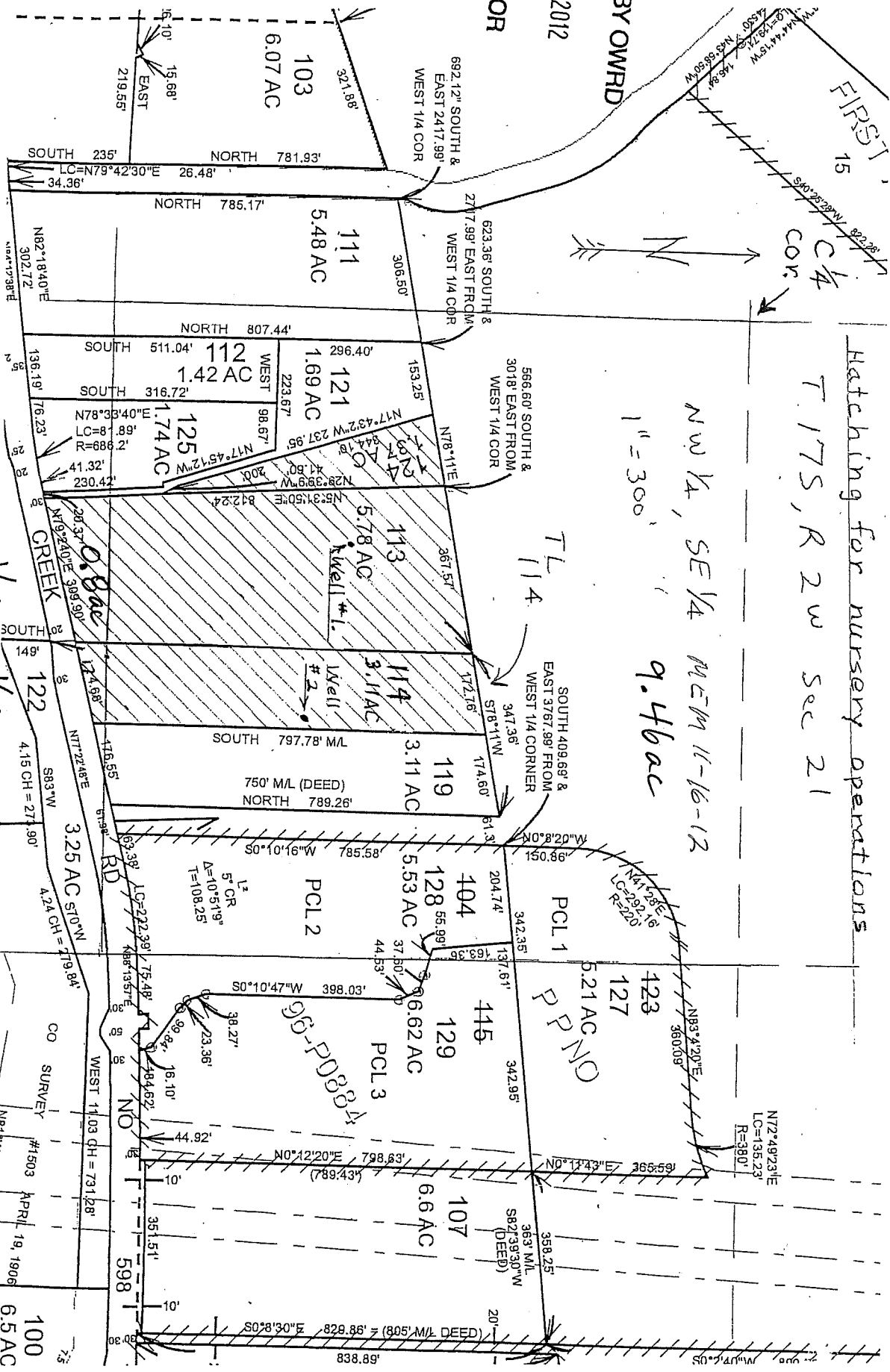
NW 1/4, SE 1/4 MEM 11-16-12

1" = 300' 9.46 ac

RECEIVED BY OWRD

NOV 01 2012

SALEM, OR



SW 1/4 SE 1/4 MEM 11-16-12

App G-17595