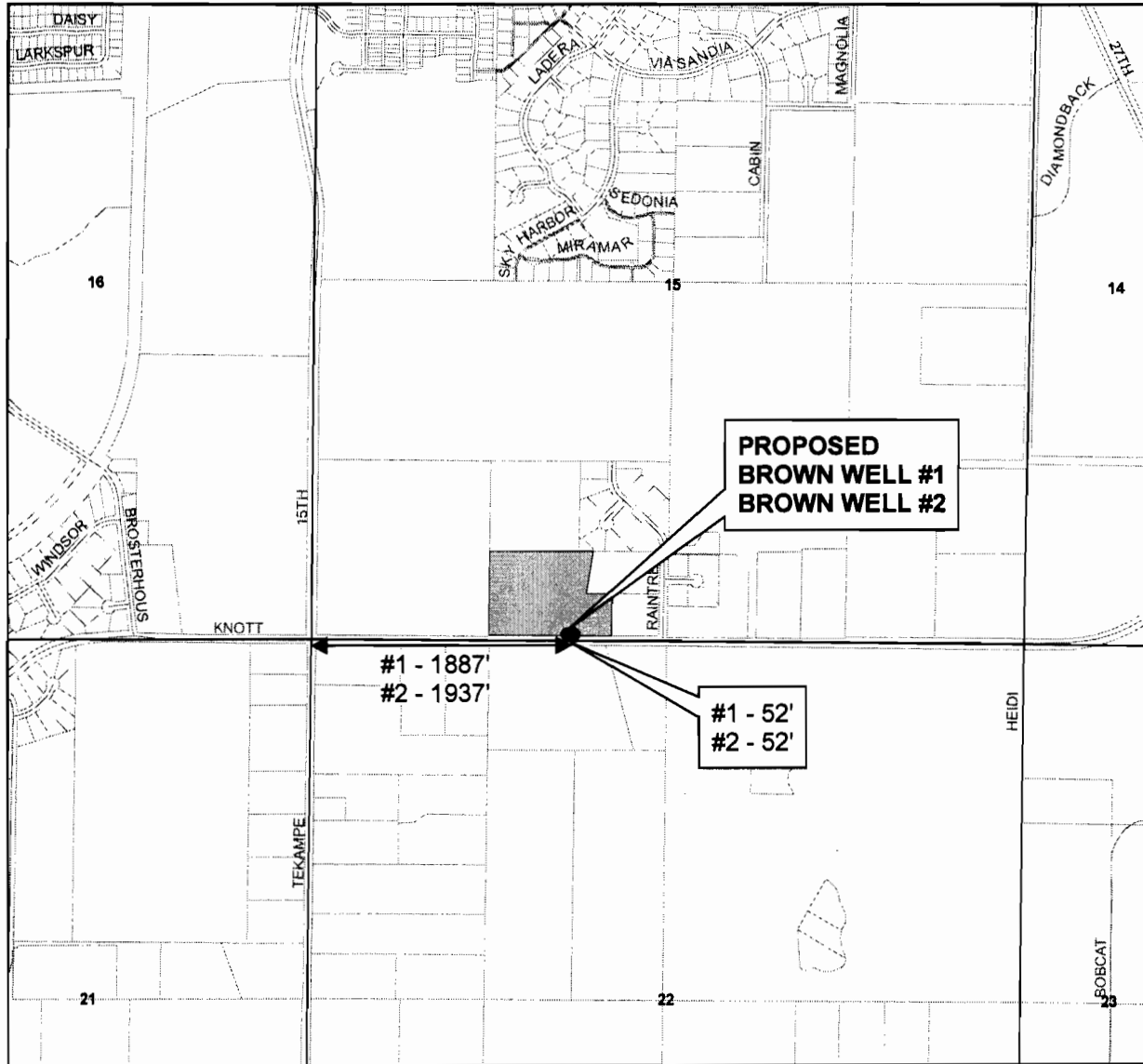




AVION WATER CO, INC.
PROPOSED POINTS OF APPROPRIATION
GROUNDWATER APPLICATION

T17 R12



1 inch = 1,320 feet



DRAWN BY: TANNER LEMMON
 AVION WATER GIS DEPARTMENT
 JULY, 2012

DISCLAIMER:

This map was prepared for the purpose of identifying the location of water rights only and is not intended to provide legal dimensions or locations of property ownership lines.

- PROPOSED POINTS OF APPROPRIATION
- WELL SITE

WELL DESCRIPTIONS

PROPOSED

BROWN WELL #1 -
 SE 1/4, SW 1/4 of
 Section 15, T 18 S, R 12 E,
 WM - 1887' East and 52'
 North from the SW corner of
 Section 15
 181215CD01600

BROWN WELL #2 -
 SE 1/4, SW 1/4 of
 Section 15, T 18 S, R 12 E,
 WM - 1937' East and 52'
 North from the SW corner of
 Section 15
 181215CD01600

NOTES:

Base Layer:
 Deschutes County Taxlot Shapefile
 Projected Coordinate System :
 NAD 1983 StatePlane Oregon South
 Geographic Coordinate System :
 North American 1983

RECEIVED BY OWNER

DEC 14 2012

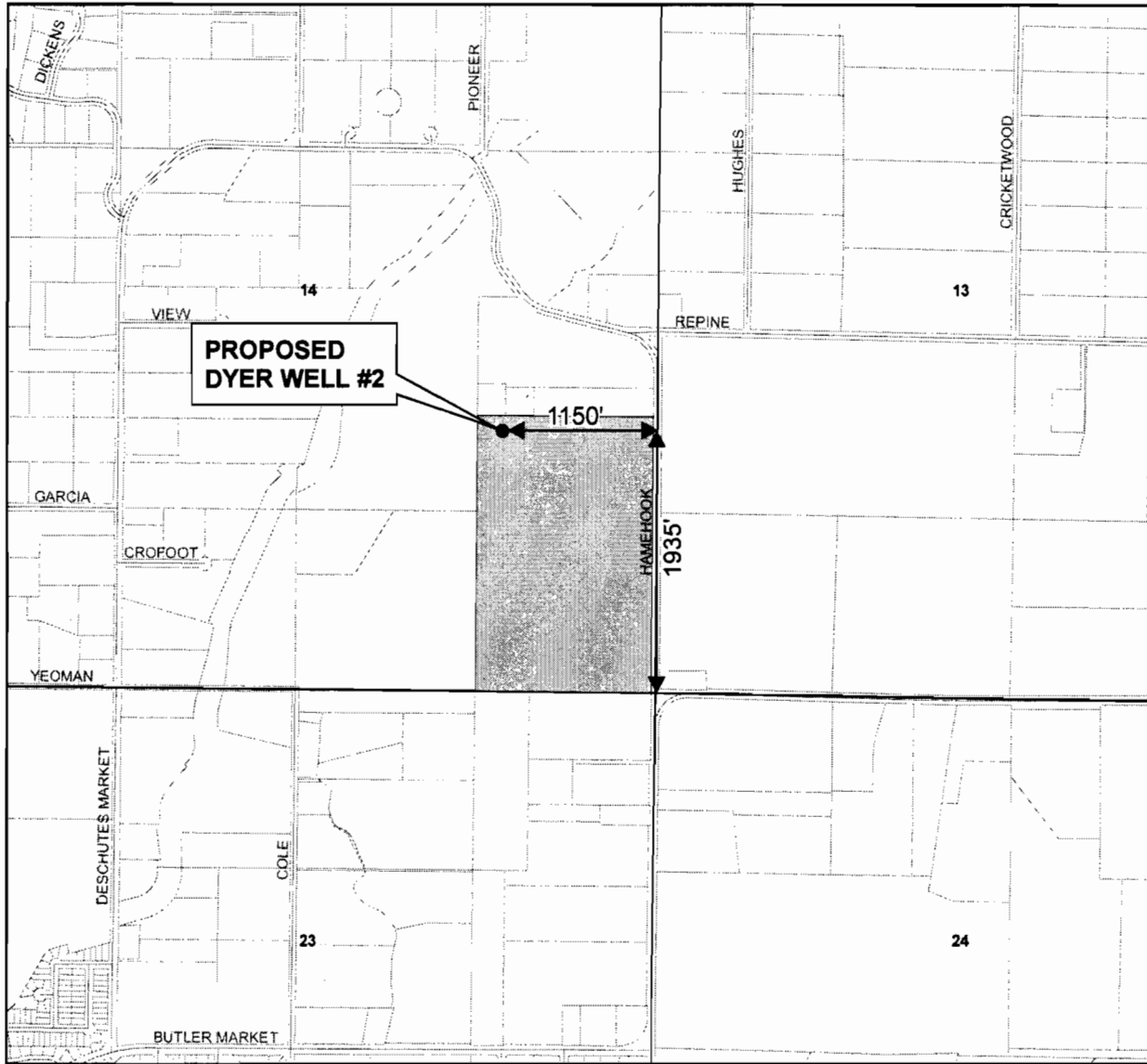
SALEM, OR

67-17606

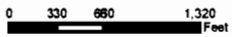


AVION WATER CO, INC.
PROPOSED POINTS OF APPROPRIATION
GROUNDWATER APPLICATION

T17 R12



1 inch = 1,320 feet



DRAWN BY: TANNER LEMMON
 AVION WATER GIS DEPARTMENT
 JULY, 2012

DISCLAIMER:

This map was prepared for the purpose of identifying the location of water rights only and is not intended to provide legal dimensions or locations of property ownership lines.

- PROPOSED POINT OF APPROPRIATION
- WELL SITE

WELL DESCRIPTIONS

PROPOSED

DYER WELL #2 -
 NE 1/4, SE 1/4 of
 Section 14, T 17 S, R 12 E,
 WM - 1935' North and 1150'
 West from the SE corner of
 Section 14
 1712140000806

NOTES:

Base Layer:
 Deschutes County Taxlot Shapefile
 Projected Coordinate System :
 NAD 1983 StatePlane Oregon South
 Geographic Coordinate System :
 GCS North American 1983

RECEIVED BY OWRD

DEC 14 2012

SALEM, OR

Gr17606

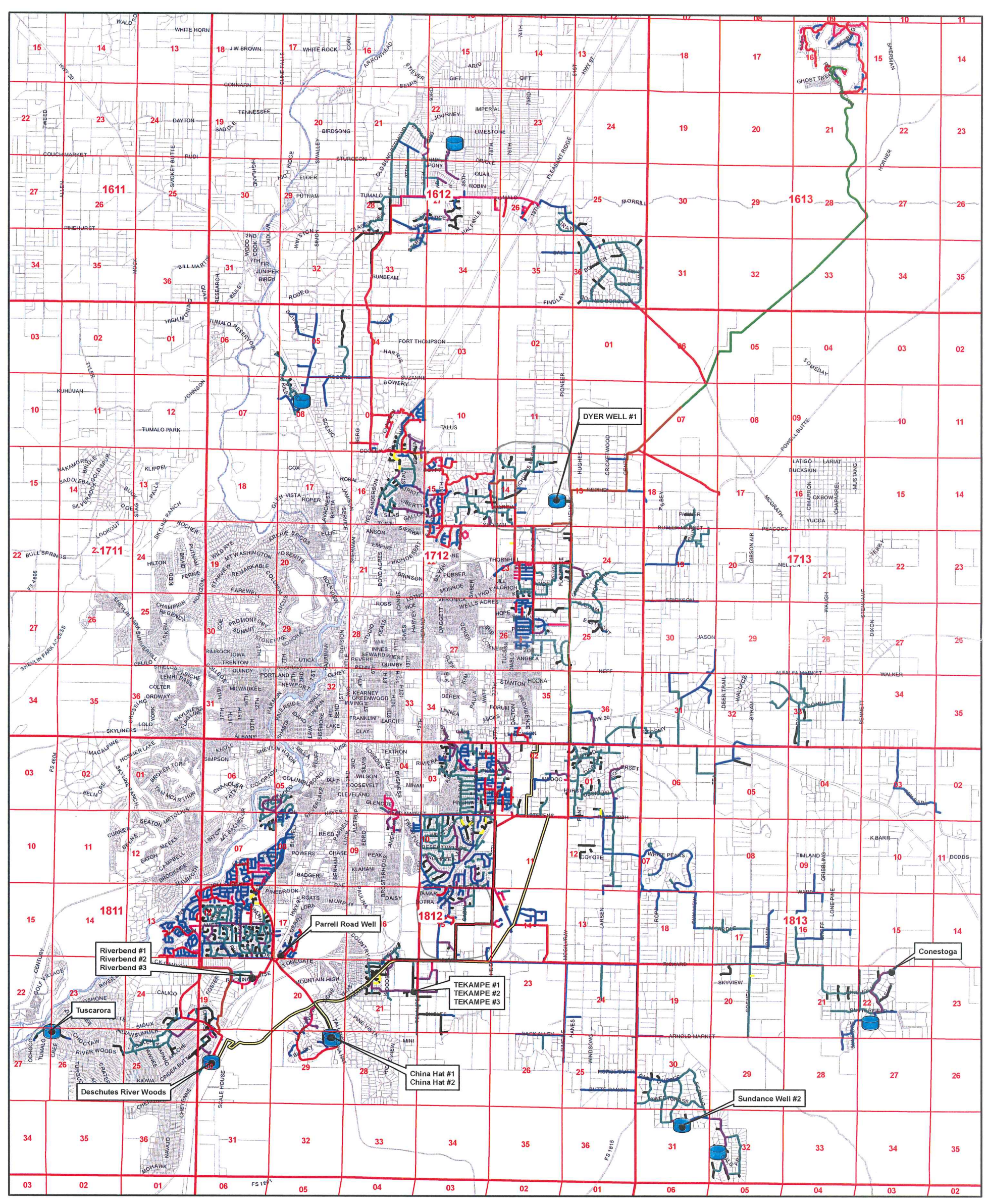
GI-17606

RECEIVED BY OWRD

GREATER AVION SYSTEM OVERVIEW MAP Proposed Place of Use Groundwater Application

DEC 14 2012

SALEM, OR



1 inch = 7,000 feet
0 0.5 1 2 Miles

● Points of Appropriation
● Storage

DRAWN BY: TANNER LEMMON
AVION WATER GIS DEPARTMENT
JULY, 2012

DISCLAIMER:
This map was prepared for the purpose of identifying the location of water rights only and is not intended to provide legal dimensions or locations of property ownership lines.

	24-dom		12-dom		4-dom
	20-dom		10-dom		3-dom
	18-dom		8-dom		2-dom
	16-dom		6-dom		
	14-dom		5-dom		

RECEIVED BY OWRD

DEC 14 2012

SALEM, OR

THIS MAP WAS PREPARED FOR
ASSESSMENT PURPOSE ONLY
REVISED: 09/01/2005

SE1/4 SW1/4 SEC. 15 T. 17S. R. 12E. W.M.
DESCHUTES COUNTY

17 12 15CD

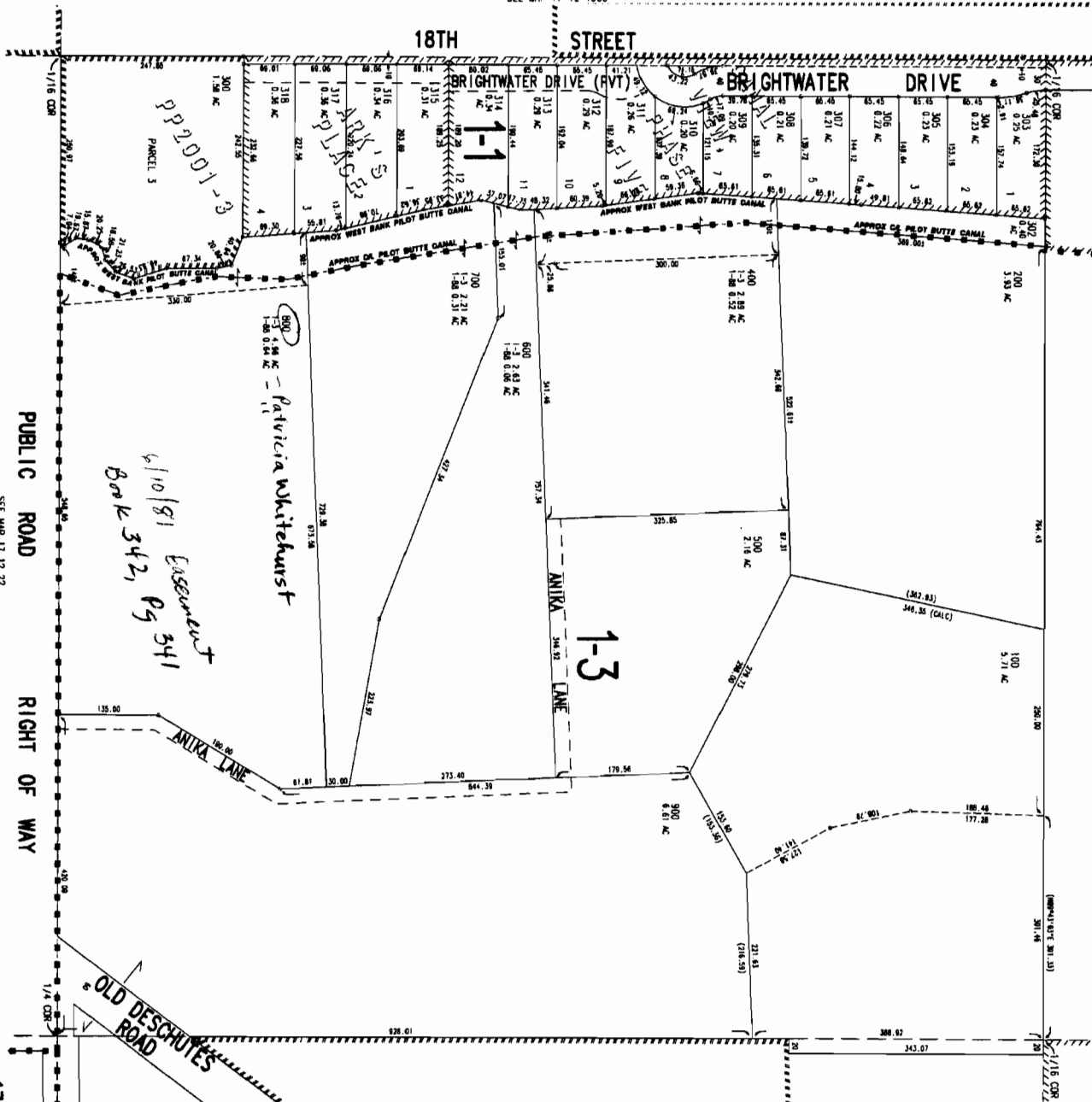
1" = 100'

SEE MAP 17 12 15CC

SEE MAP 17 12 15CA

SEE MAP 17 12 15CD

Cancelled Nos.
301



G-7606