

T 17 S, R 4 W, Sec 14

RECEIVED

DEC 24 2012

WATER RESOURCES DEPT  
SALEM, OREGON

SE 1/4 SW 1/4

Acres	1/4	1/4
3	SE SW 14	
1 1/2	SW SE 14	
1/8	NE NW 23	
1/8	NW NE 23	

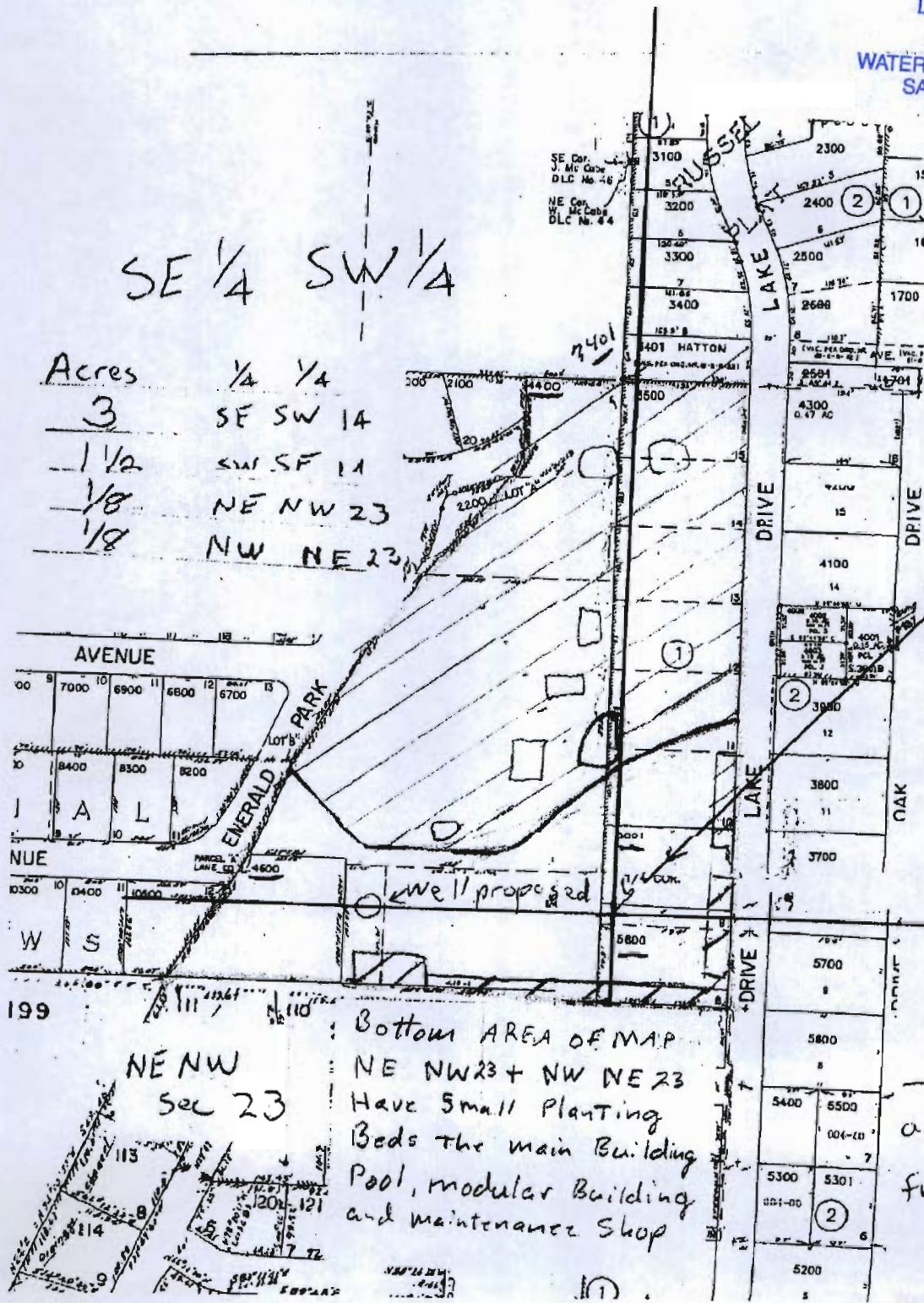


1" = 200'

S 1/4 cor  
Sec 14

SW SE

Well is  
0' South  
and 300' West  
from S 1/4 cor  
sec 14



Bottom AREA OF MAP  
NE NW 23 + NW NE 23  
Have Small Planting  
Beds the main Building  
Pool, modular Building  
and maintenance Shop

NE NW  
Sec 23

199



T 17 S, R 4 W, Sec 14

SE 1/4 SW 1/4

Acres	1/4	1/4
1/8	SE SW 14	
1/8	SW SE 14	
1 1/2	NE NW 23	
3	NW NE 23	

1" = 200'

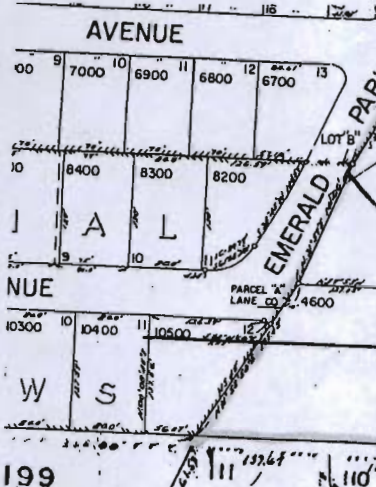
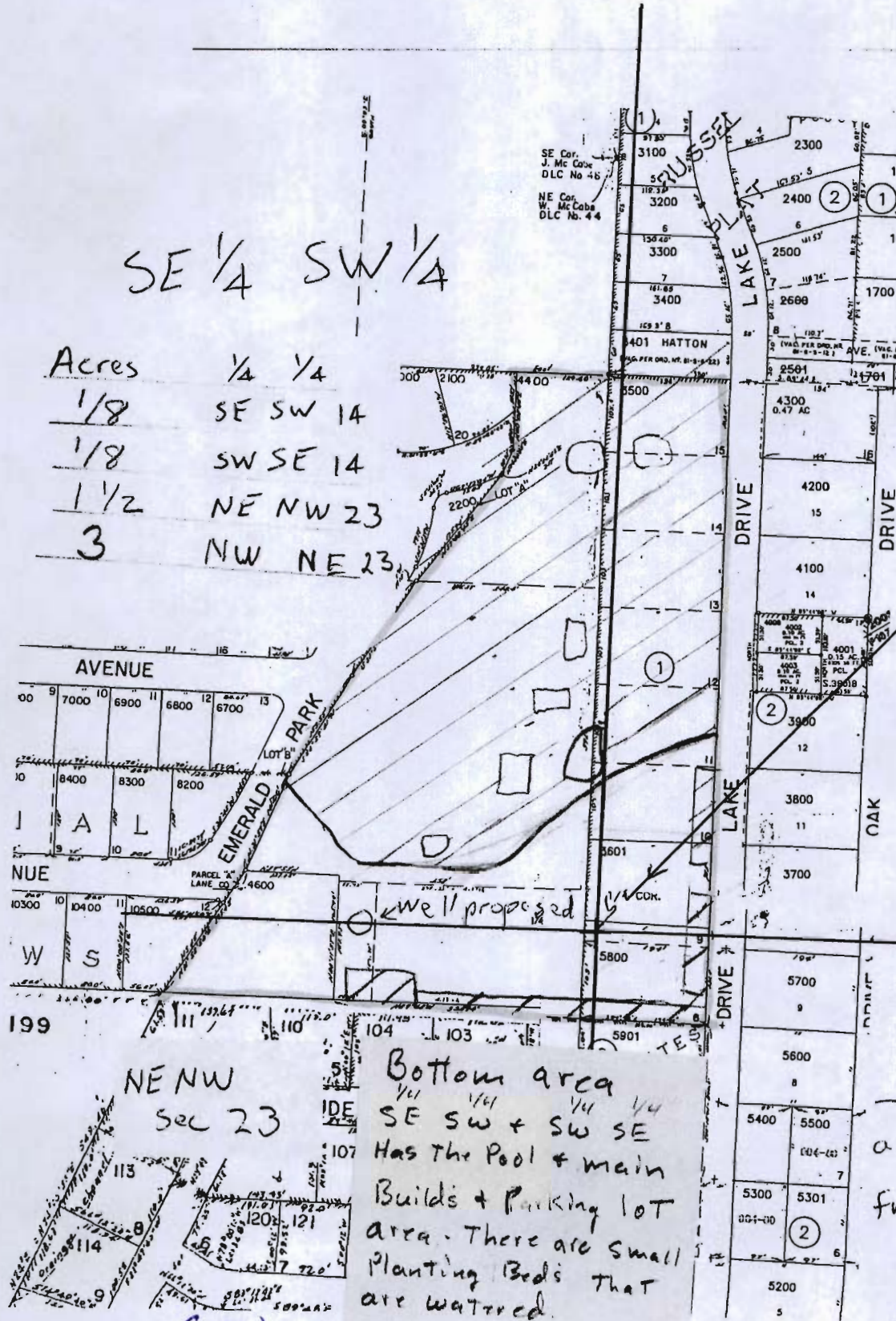
S 1/4 cor  
Sec 14

SW SE

Well is  
0' South  
and 50' West  
from S 1/4 cor  
sec 14.

Bottom area  
1/4 SE SW + SW SE  
Has the Pool + main  
Builds + Parking lot  
area. There are small  
Planting Beds that  
are watered.

GI-17610



NE NW  
Sec 23



RECEIVED BY OWRD

DEC 17 2012

SALEM, OR

HATTON AVE

BARRETT AVE

EMERALD PARK DR

NANTUCKET AVE

AUDE LAVE

OAK DR

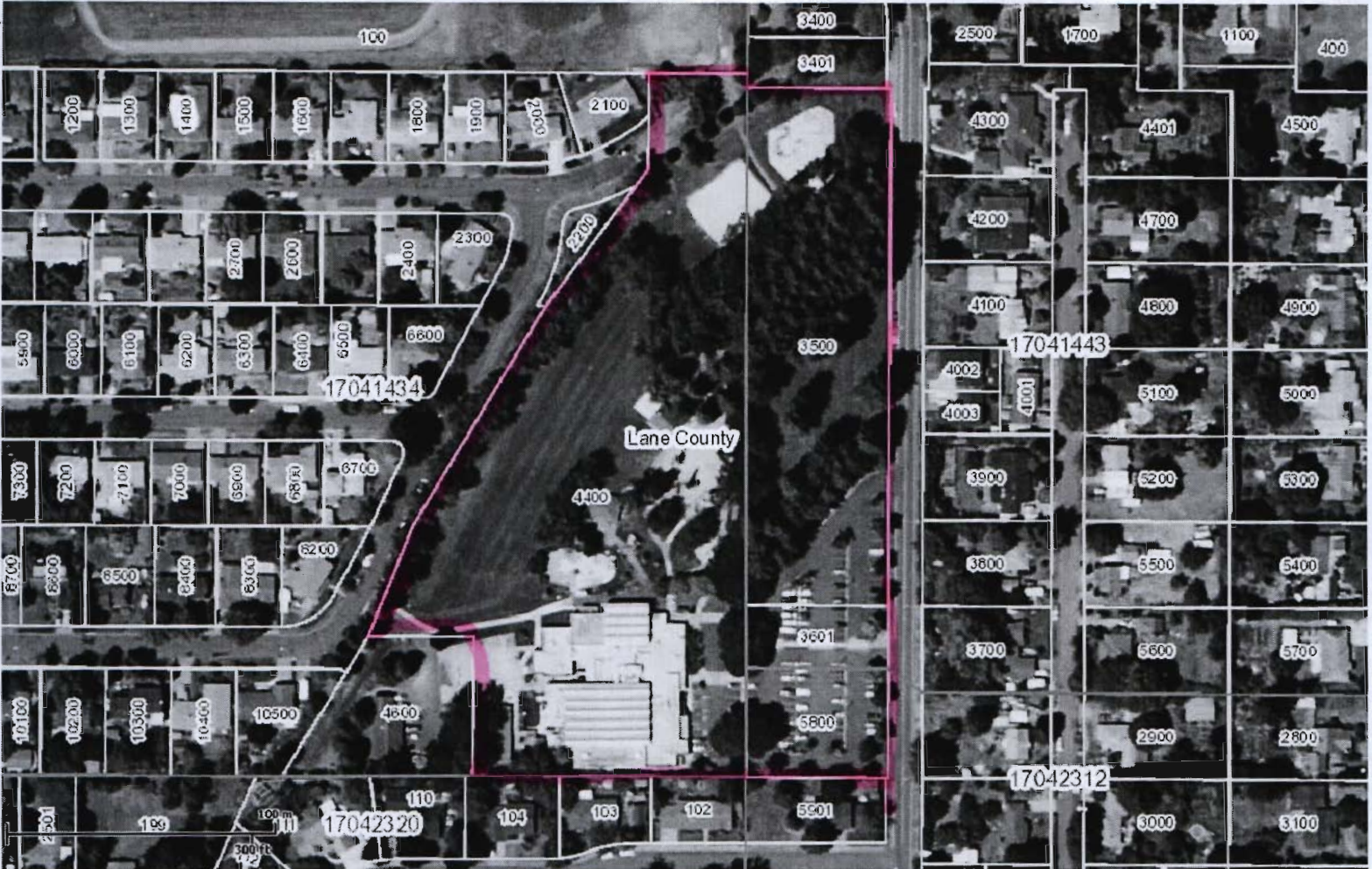
LAKE DR

097-1-2



# The Oregon Map

New Directions



Copyright 2011 ORMAP. All rights reserved. Wed Dec 19 2012 04:20:59 PM.

Work Copy

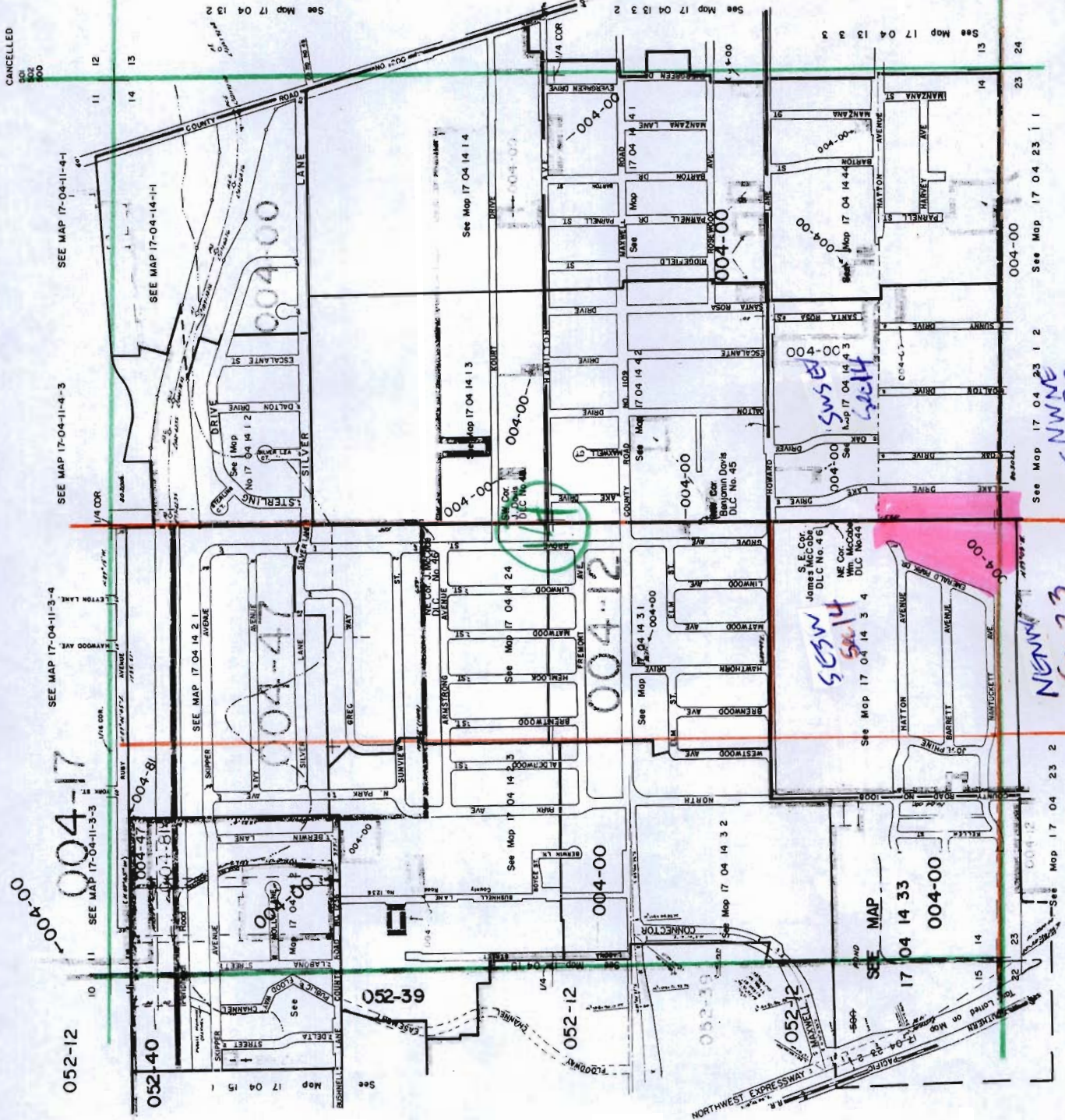
KJK  
12-19-12

G-17610



Section 14 T.17S. R.4W.W.M.  
LANE COUNTY

1"=400'



12-19-12  
K. J. Jones  
C. J. Jones

CANCELLED  
501  
502  
500

SEE MAP 17-04-11-4-1

SEE MAP 17-04-14-1-I

SEE MAP 17-04-11-4-3

SEE MAP 17-04-11-3-4

SEE MAP 17-04-11-3-3

SEE MAP 17 04 14 2 1

SEE MAP 17 04 14 2 3

SEE MAP 17 04 14 2 4

SEE MAP 17 04 14 2 5

SEE MAP 17 04 14 2 6

SEE MAP 17 04 14 2 7

SEE MAP 17 04 14 2 8

SEE MAP 17 04 14 2 9

SEE MAP 17 04 14 2 10

SEE MAP 17 04 14 2 11

SEE MAP 17 04 14 2 12

SEE MAP 17 04 14 2 13

SEE MAP 17 04 14 2 14

SEE MAP 17 04 14 2 15

SEE MAP 17 04 14 2 16

SEE MAP 17 04 14 2 17

004-00

004-17

004-47

004-81

004-81

004-00

052-39

052-12

004-00

004-00

004-00

004-00

004-00

004-00

004-00

004-00

004-00

004-00

004-00

004-00

004-00

004-00

004-00

052-12

052-40

052-39

052-12

052-39

052-12

052-39

052-12

052-39

052-12

052-39

052-12

052-39

052-12

052-39

052-12

052-39

052-12

052-39

052-12

052-39

052-12

052-39

052-12

052-40

052-39

052-12

052-39

052-12

052-39

052-12

052-39

052-12

052-39

052-12

052-39

052-12

052-39

052-12

052-39

052-12

052-39

052-12

052-39

052-12

052-39

CU-17610



17042312  
EUGENE

12-19-12

*work copy*  
*KJK*  
*12-19-12*

CANCELLED  
1897  
4200  
600  
602  
7068  
7400  
7501

N.W. 1/4 N.E. 1/4 SEC. 23 T.17S. R.4W. W.M.  
Lane County

1" = 100'

FOR ASSESSMENT AND  
TAXATION ONLY



MAPS  
10/22/00 - 10/17/00

EUGENE  
17042312

*Gr-17610*



17041434  
EUGENE

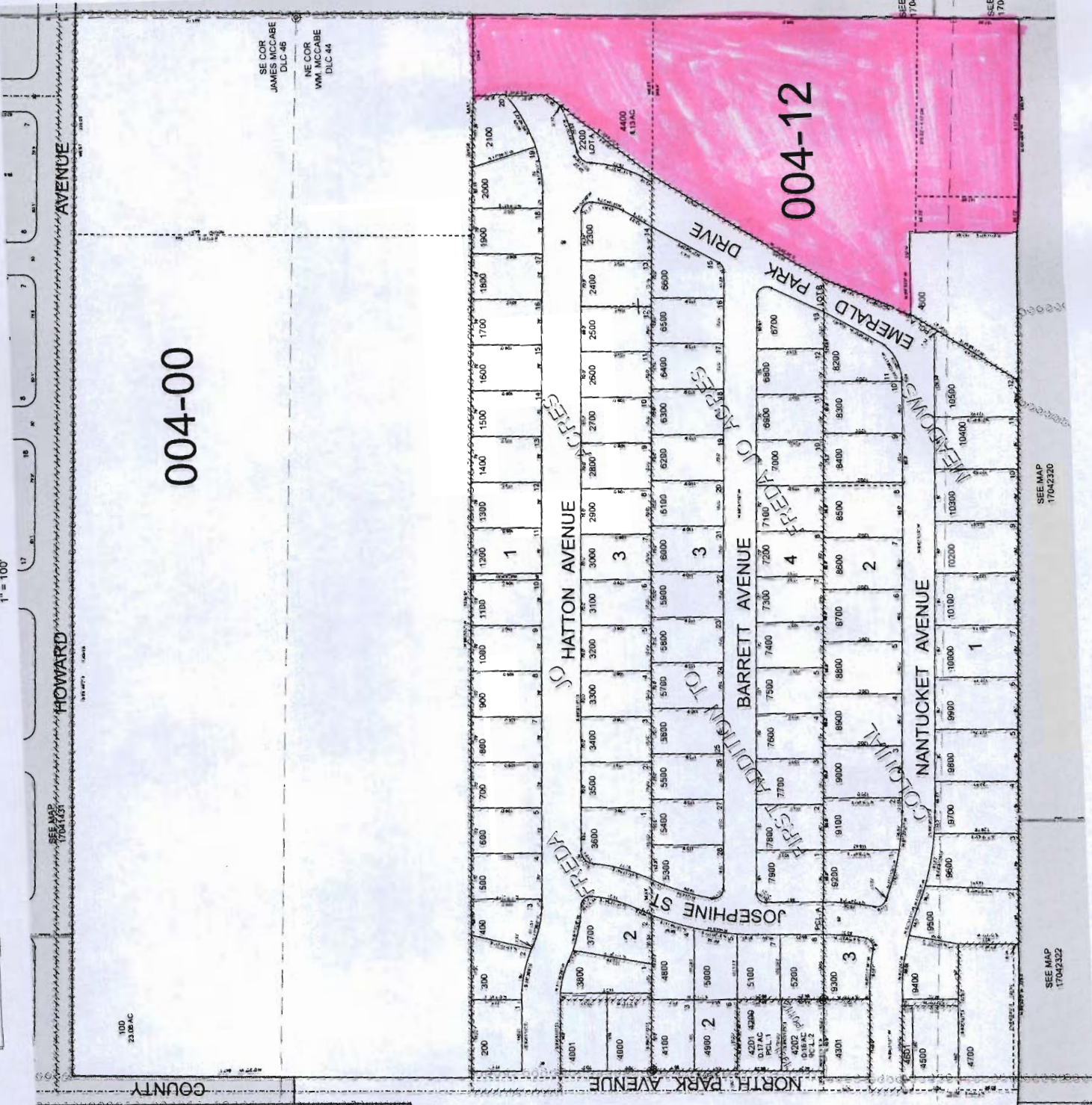
Map 19 - 2012.06.28 10:55  
CANCELLED  
4200

*work copy  
KJK  
12-19-12*

S.E. 1/4 S.W. 1/4 SEC. 14 T.17S. R.4W. W.M.  
Lane County

1" = 100'

FOR ASSESSMENT AND  
TAXATION ONLY



SEE MAP  
17041432

SEE MAP  
17041433

SEE MAP  
17041443

SEE MAP  
17042312

SEE MAP  
17042320

SEE MAP  
17042322

EUGENE  
17041434

G-17610



17041443  
EUGENE

Revised: 2011-12-08 15:50

S.W.1/4 S.E.1/4 SEC. 14 T.17S. R.4W. W.M.  
Lane County  
1" = 100'

FOR ASSESSMENT AND  
TAXATION ONLY

*work copy  
KJK  
12-19-12*

CANCELLED  
100  
10100  
10200  
1701  
1702  
1800  
2501  
2500  
300  
3600  
4400  
7500  
7600  
7200  
7200  
7200

WARNING:  
THIS MAP IS FOR INFORMATION ONLY.  
IT DOES NOT CONSTITUTE A WARRANTY  
OR GUARANTEE OF ANY KIND.



*Gr-17610*

EUGENE  
17041443