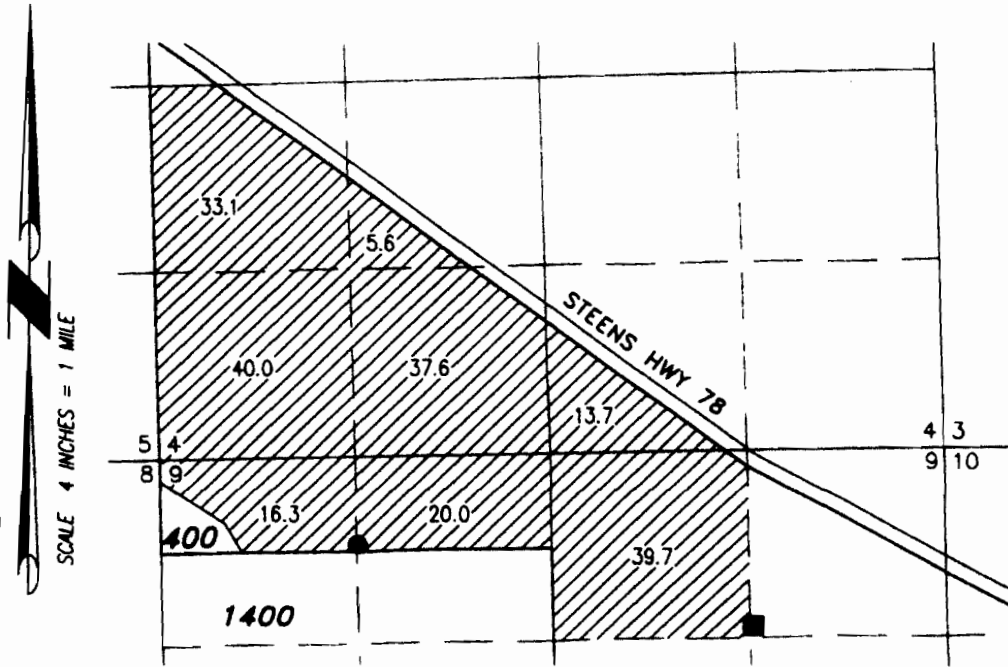


TRANSFER MAP TO ACCOMPANY APPLICATION TO ADD A POINT OF APPROPRIATION FOR GOLDEN RULE FARMS, INC.

SECTIONS 4 & 9, TOWNSHIP 27 SOUTH, RANGE 34 EAST, W.M.
TAX LOT: 400

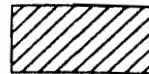


RECEIVED BY OWRD

DEC 17 2012

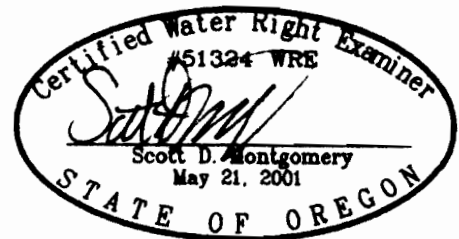
SALEM, OR

- **HARN 1488 WELL 2 (G-8593)**
LOCATED IN THE NE 1/4 NW 1/4 SECTION 9, T27S R34E, W.M. AND 590 FEET SOUTH AND 1345 FEET EAST FROM THE NW CORNER OF SECTION 9.
- **HARN 1495 WELL (G-16585)**
LOCATED IN THE NE 1/4 NE 1/4 SECTION 9, T27S R33E, W.M. AND 1302 FEET SOUTH AND 1302 FEET WEST FROM THE NE CORNER OF SECTION 9.



206.0 ACRES WATER RIGHTS FROM
C#82370 (G-8593), AS SHOWN.

THIS MAP IS FOR THE PURPOSE OF LOCATING A WATER
RIGHT ONLY AND HAS NO INTENT TO PROVIDE LEGAL
DIMENSIONS OR THE LOCATION OF PROPERTY LINES



RENEWAL DATE: 12/31/2012

<p>PROJECT No. 12-059</p>	<p style="text-align: center;">ALL POINTS ENGINEERING & SURVEYING, INC.</p>
<p>PREPARED AT THE REQUEST OF: GOLDEN RULE FARMS, INC. P.O. BOX 255 CHRISTMAS VALLEY, OR 97641</p>	<div style="display: flex; align-items: center;"> <p>P.O. BOX 767 (CRR) TERREBONNE, OREGON 97760 (541) 548-5833 PH (541) 585-4602 FX www.APEandS.com</p> </div>

G-1760B