

T. 6N., R. 35E., W.M.

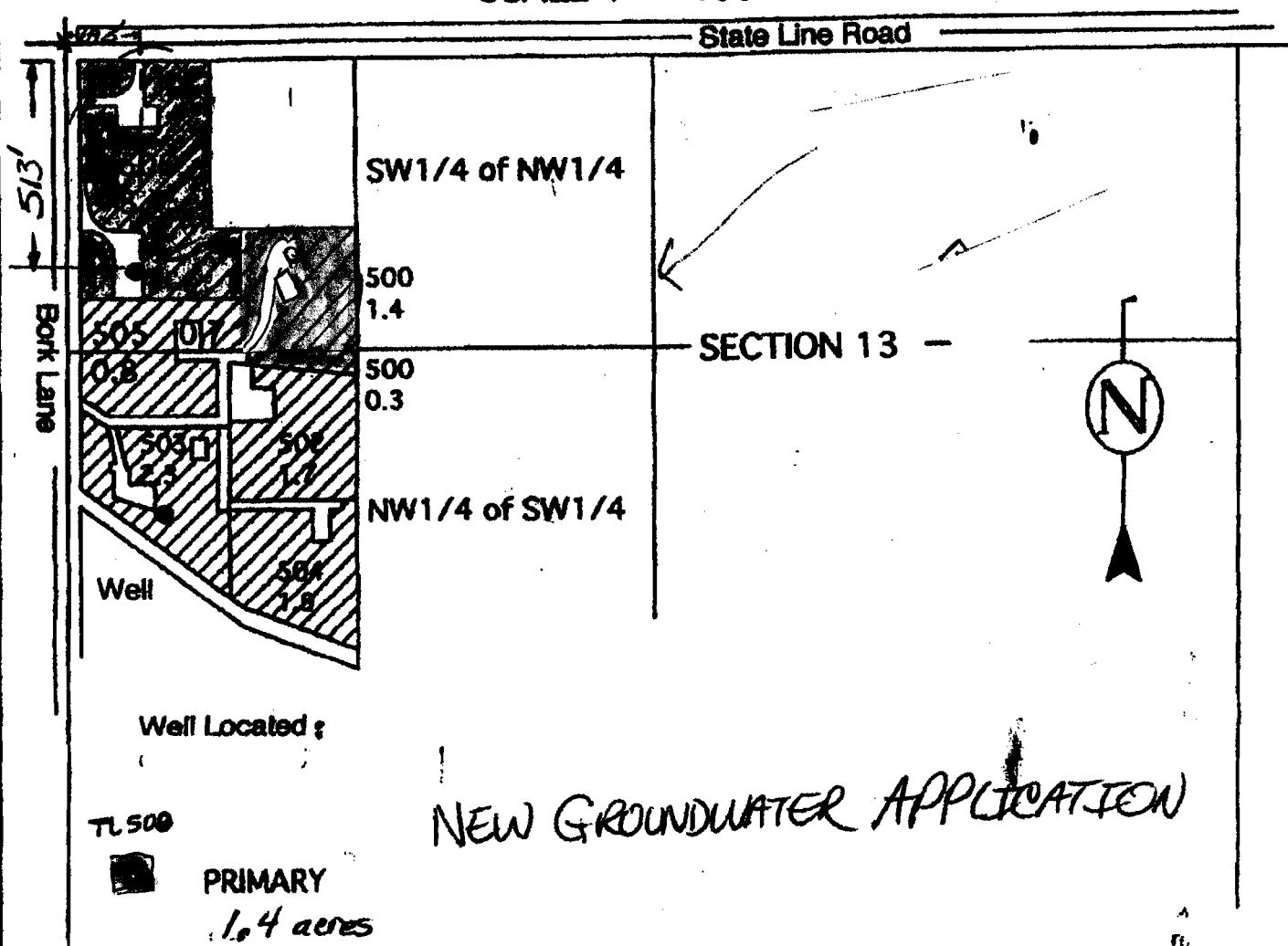
UMATILLA COUNTY

SCALE 1" = 400'

RECEIVED

SEP 30 2002

WATER RESOURCES DEPT  
SALEM, OREGON





THIS MAP IS FOR THE PURPOSE  
OF IDENTIFYING THE LOCATION  
OF WATER RIGHTS ONLY AND IS  
NOT INTENDED TO PROVIDE THE  
LEGAL DIMENSIONS OR LOCATIONS  
OF PROPERTY OWNERSHIP LINES.

RECEIVED

OCT 26 2006

WATER RESOURCES DEPT  
SALEM, OREGON


 Hermiston, Oregon 97838  
 (541) -567-2017
 

MAP 6N 35 13C, TAX LOT 500

STATE LINE ROAD

TAX LOT 400

TRACT

544.6

GRANDVIEW ORCHARD

490.6

PAR. No. 3

AREA = 349,372 SQ. FT. = 8.02 A.

TAX Lot 500

500°03'17"W, 76.76'

N84°18'53"W, 297.50'

T. TRANSFORMER BOX

RECEIVED

OCT 26 2006

WATER RESOURCES DEPT  
SALEM, OREGON

M-H

PUMP HSE.

BARN

HOUSE

SHED

136°11'42"W, 109.31'

589°11'42"E, 303.04'

500°03'35"E, 292.04'

575°12'36"E, 41.37'

500°02'42"E, 2473.20'

COUNTY ROAD 719 (GRIGGS ROAD)

N00°02'42"W, 757.65'

LOT 8

N86°27'00"W, 332.49'

12' UTILITY EASEMENT

30' ROAD EASEMENT

N89°55'42"E, 271.74'

IRRIGATION PIPE

500°20'42"E

101.30'

EASEMENT

236.85'

0°42'E, 338.15'

POINT OF BEGINNING: 503°01'31"E, 769.28' FROM NW COR. SEC. 13

1/2 I.R. (MUNNS SURVEY #5364)  
NW COR. FRAC. SEC. 13

551°00'00"E

78.26'

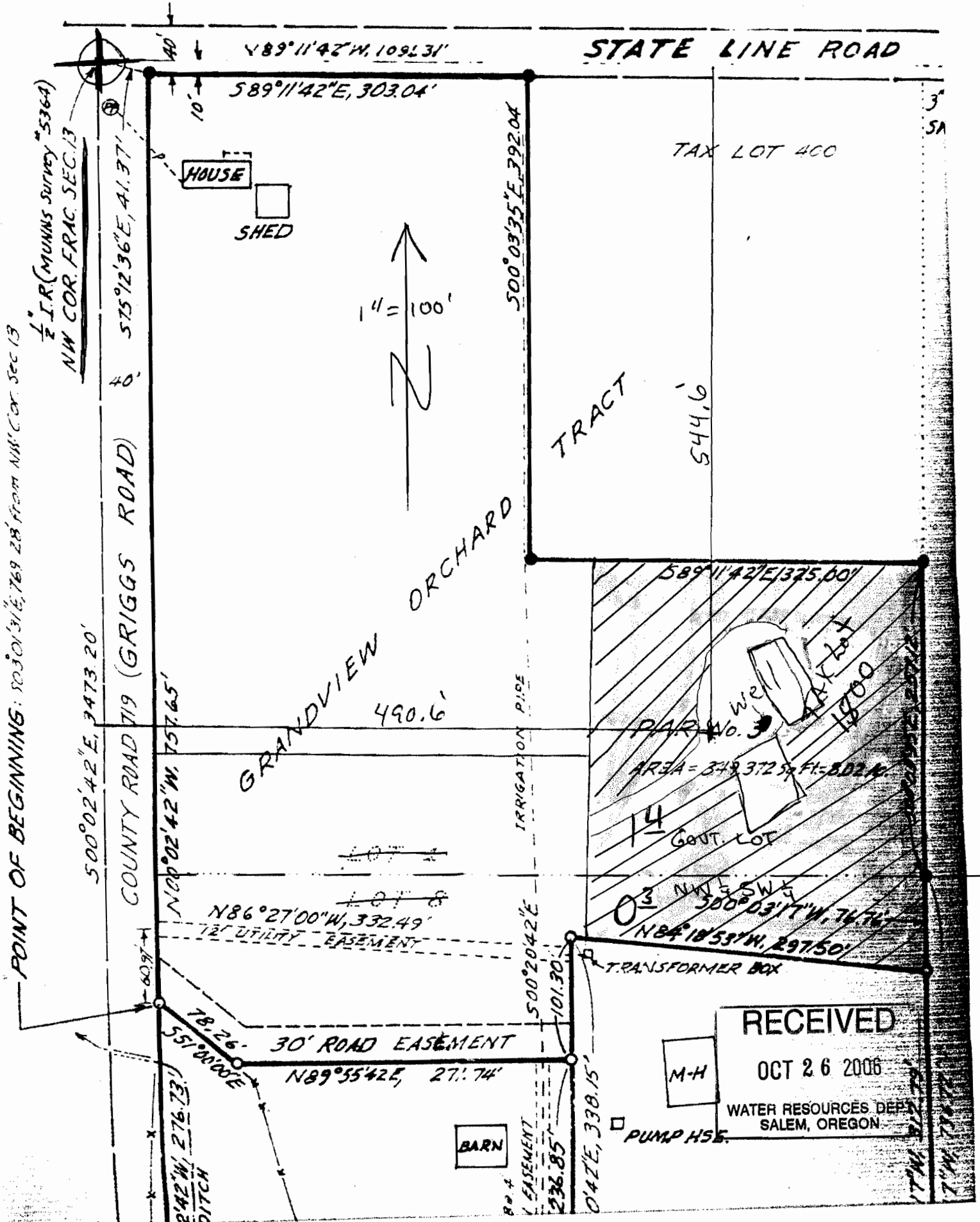
276.73'

17' W. BINDER

17' W. BINDER

# WORK COPY

MAP 6N 35 13C, TAX LOT 500



This map was prepared for Assessment purposes only.

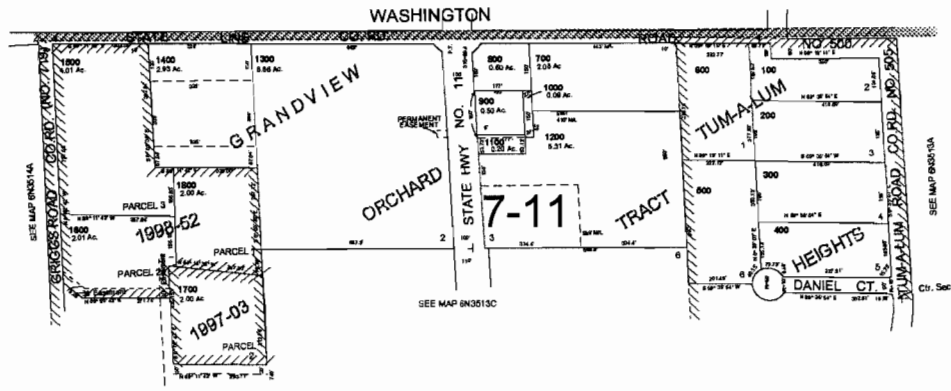


NW 1/4 SEC 13 T 6N R 35E WM  
UMATILLA COUNTY, OR  
SCALE: 1" = 200'

10/01/02

6N3513B

AERIAL PHOTO NO. NZ-6P-17



6N3513B

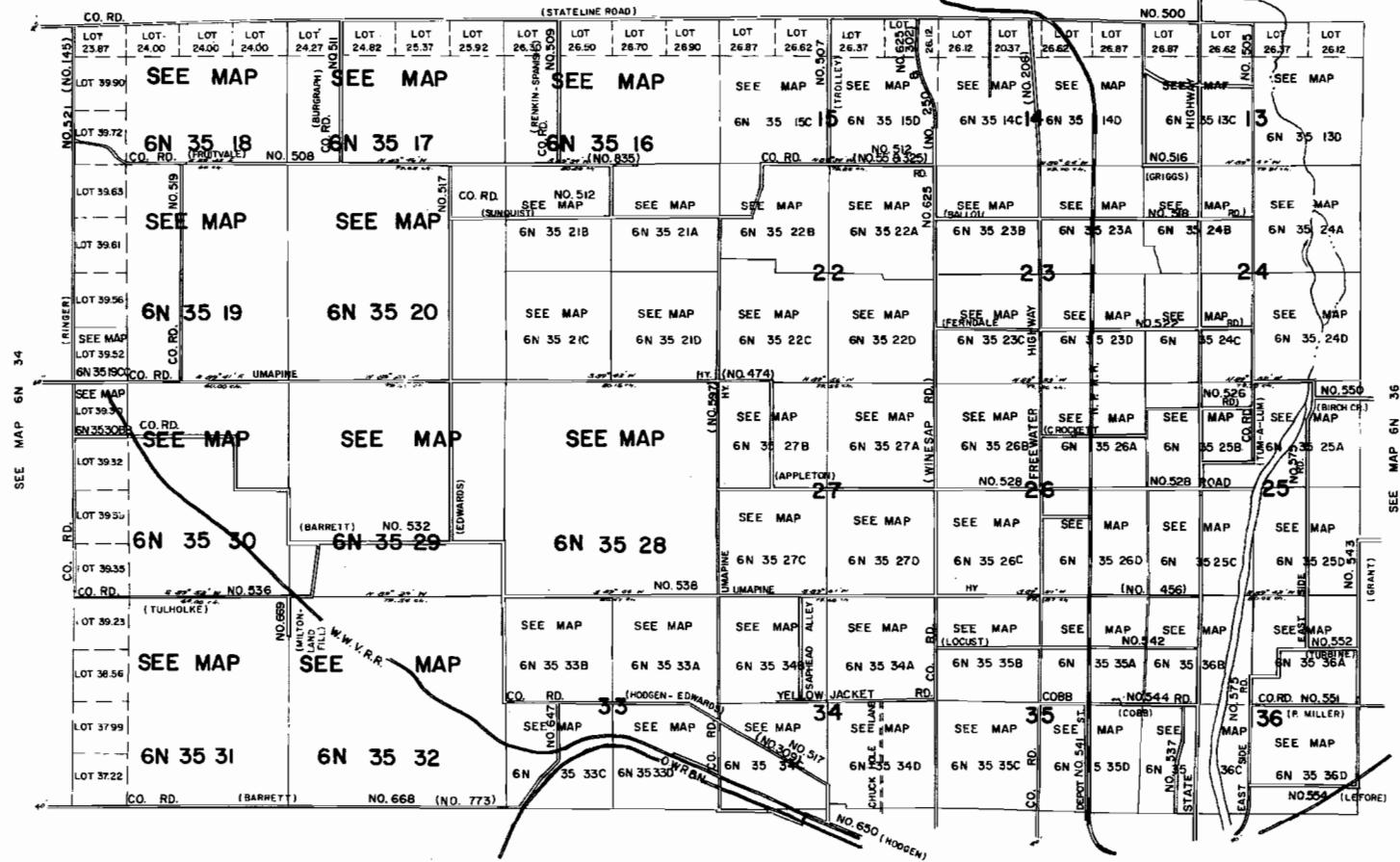
THIS MAP WAS PREPARED FOR ASSESSMENT PURPOSES ONLY

T6N R35 E.W.M.  
UMATILLA COUNTY

6N 35  
& INDEX

1"=2000'

WASHINGTON



See Map 5N 35

