

UPDATED SUPPLEMENTAL MAP FOR CLAIM 317

DENOTING IRRIGATED LANDS

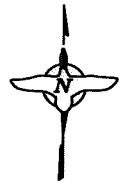
IN THE NAME OF: US FISH AND WILDLIFE SERVICE

TULE LAKE NATIONAL WILDLIFE REFUGE

SECTIONS 14 & 23, T. 47 N., R. 4 E., M.D.M.

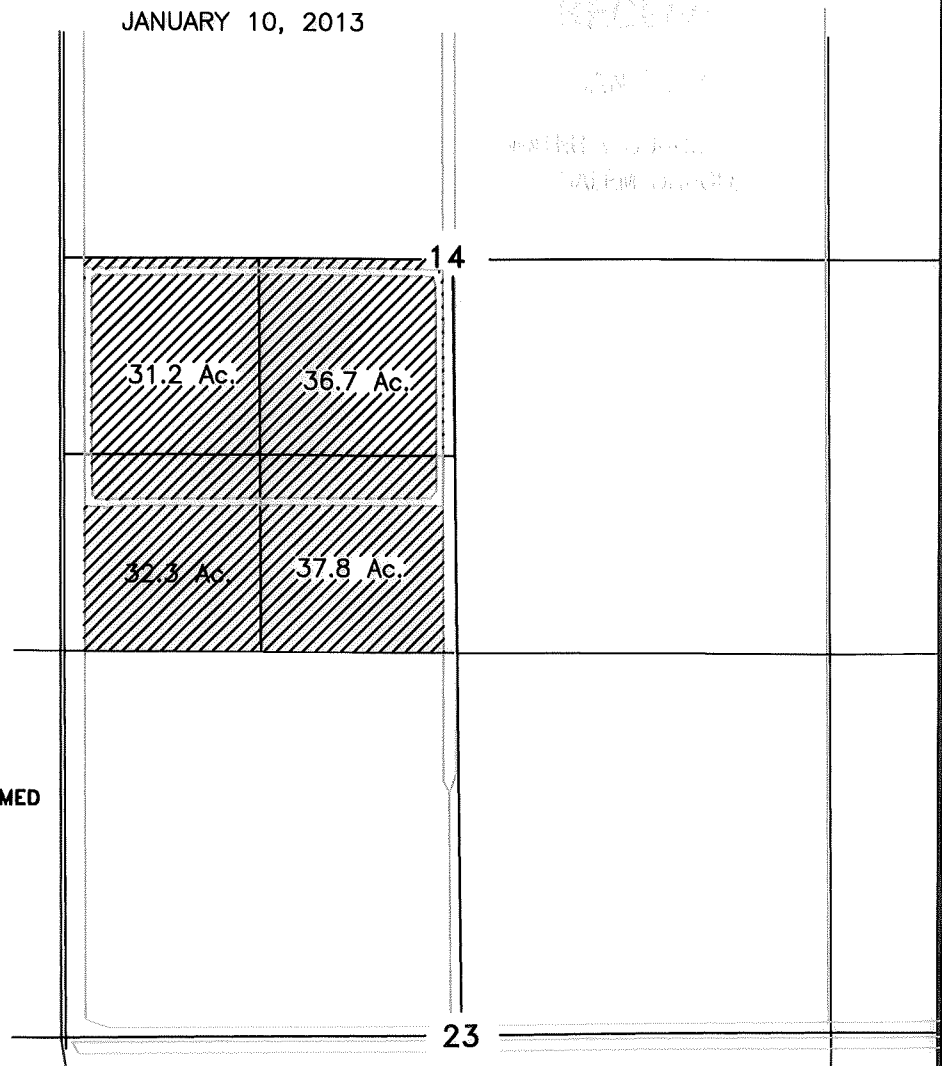
1 INCH = 1320 FEET

JANUARY 10, 2013



TULE

LAKE



IRRIGATED REFUGE LANDS, FARMED

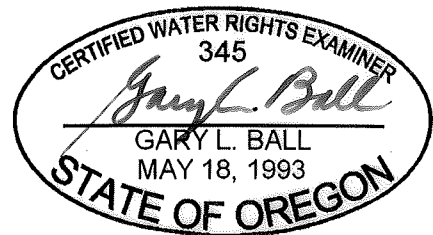
Amendment to the OWRD adjudication maps depicting the current limits of water use

Acreages shown are only for those quarter/quarter subdivisions or lots where a change in place of use has been made.

ADDITIONAL IRRIGATED REFUGE LANDS, FARMED ARE SHOWN ON OWRD MAPS FOR TOWNSHIPS

T. 41 S. R. 8 E., T. 41 S. R. 9 E., AND T. 41 S. R. 10 E.

This map is based on previously submitted maps of record prepared by the USFWS and has been updated only to identify the lands as "Irrigated Refuge Lands, Farmed" and/or "Irrigated Refuge Lands, Non-Farmed."



RENEWS: 12/31/2013

This map is not intended to provide legal dimensions or locations of property lines