

IMPORTANT
This Map for Assessment
and Taxation Purposes
ONLY

SEC. 6 T8S R5W WM
POLK COUNTY

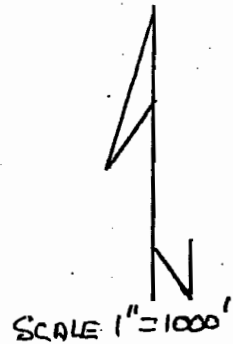
Scale 1" = 400'

8.5.6

6-17626

TANKS
RESERVOIR
(TWO CONNECTED
ABOVE-GROUND
TANKS)
2600' NORTH
1650' WEST
FROM SE
CORNER
SECTION 6

"SOUTH WELL"
POLK 53022
2350' NORTH
1640' WEST
FROM SE
CORNER
SECTION 6



"NORTH WELL"
POLK 53096
2600' NORTH
1600' WEST
FROM SE
CORNER
SECTION 6

- Cancelled No.
- 102
 - 104
 - 108
 - 109
 - 113
 - 200
 - 201
 - 202
 - 203
 - 204
 - 205
 - 290
 - 281
 - 282
 - 300
 - 401
 - 402
 - 800
 - 800
 - 801
 - 803
 - 805
 - 1100
 - 1200
 - 1204
 - 1307
 - 1801
 - 1802
 - 1801

"SUMP WELL"
2160' NORTH
1000' WEST
FROM SE
CORNER
SECTION 6

SHADED
AREA =
30 ACRES
PRIMARY
ACRES
TO BE
IRRIGATED

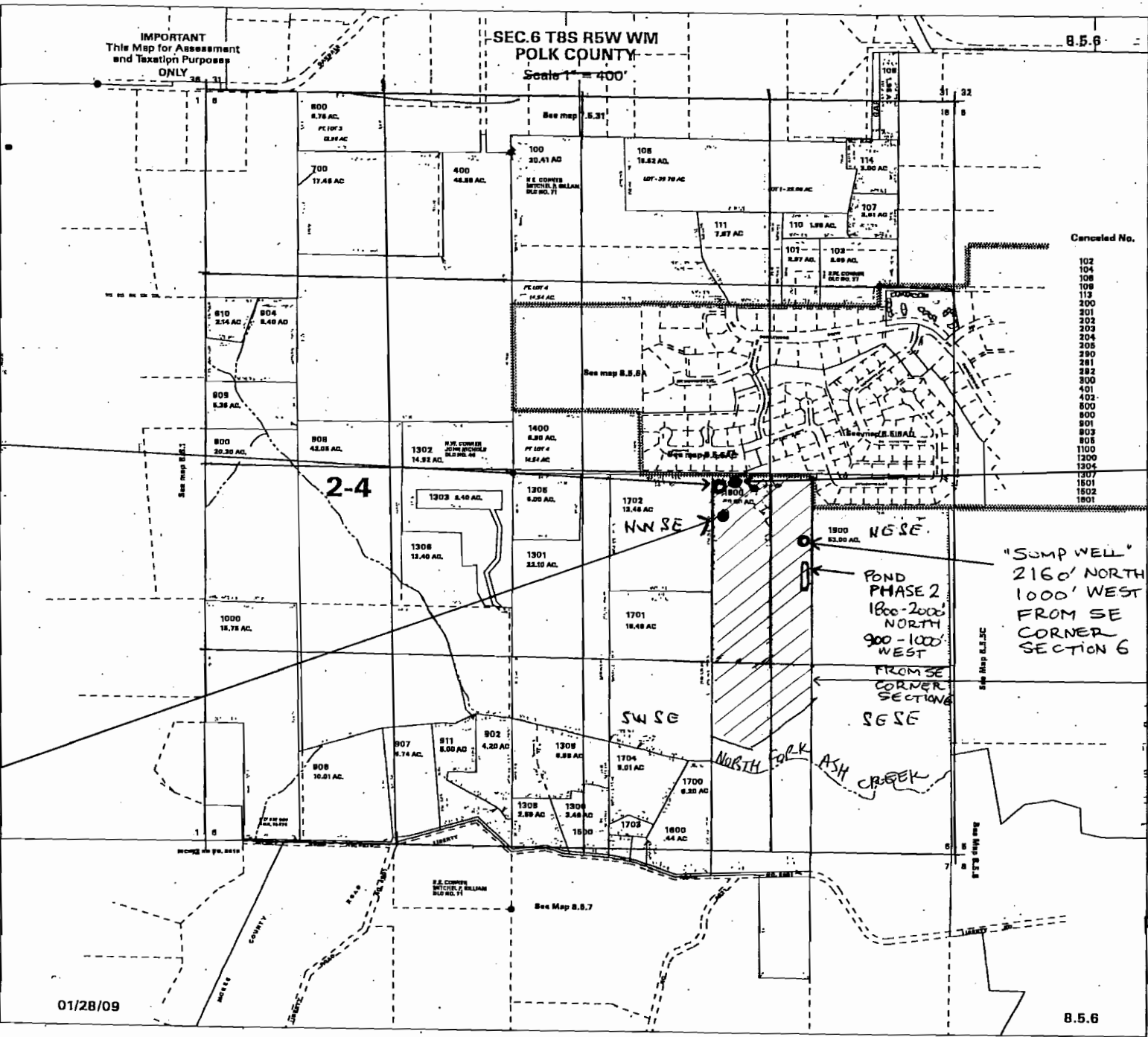
RECEIVED BY OWRD

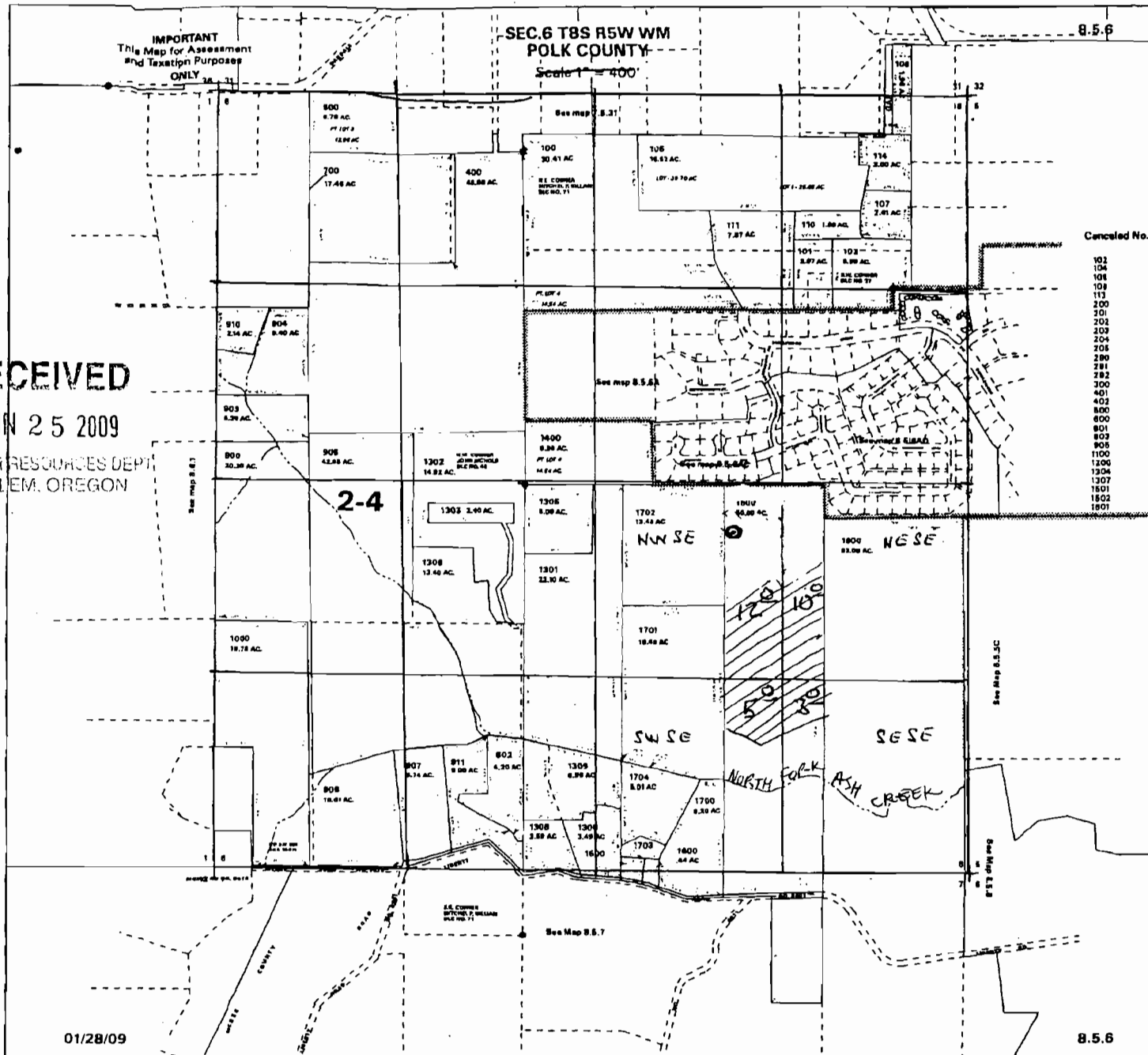
FEB 06 2013

SALEM, OR

01/28/09

8.5.6





UPDATED
Proposed Well
LOCATED
2310' NORTH
1640' WEST
FROM SE CORNER
SECTION 6.

RECEIVED
NOV 18 2009
WATER RESOURCES DEPT
SALEM, OREGON

RECEIVED
JUN 25 2009
WATER RESOURCES DEPT
SALEM, OREGON

Approved TO FILE
4/27/2013
6-17259

BC