

RECEIVED

DEC 19 2013

WATER RESOURCES DEPT
SALEM, OREGON

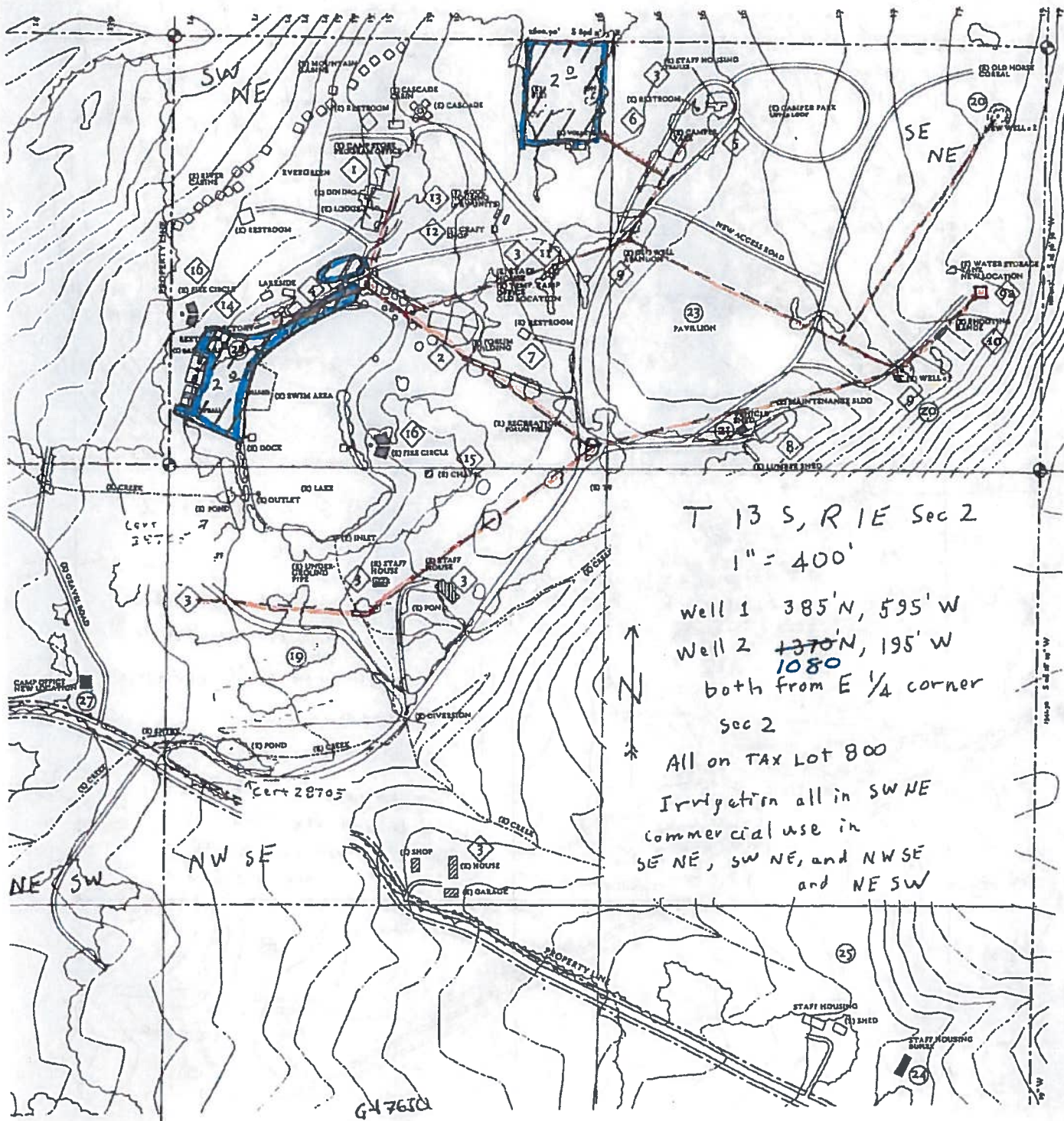
Camp Tadmor
43943 McDowell Creek Dr.
Lebanon, OR 97355

Approved as corrected
by David R. B...
12/19/13

RECEIVED

FEB 13 2013

WATER RESOURCES DEPT
SALEM, OREGON



T 13 S, R 1 E Sec 2

1" = 400'

Well 1 385' N, 595' W

Well 2 1370' N, 195' W

both from E 1/4 corner

Sec 2

All on TAX Lot 800

Irrigation all in SW NE
commercial use in
SE NE, SW NE, and NW SE
and NE SW

647610

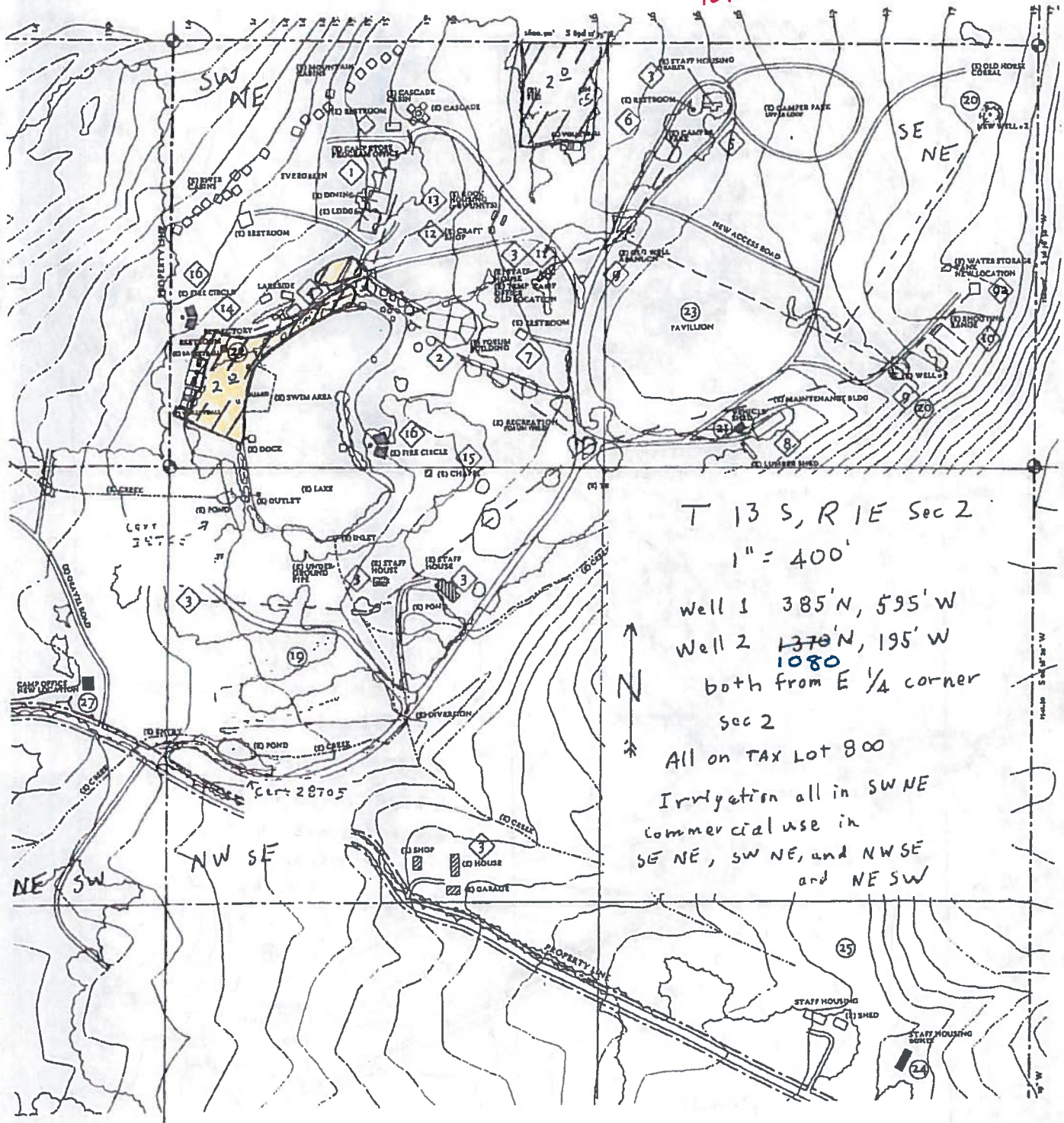
RECEIVED

DEC 19 2013

WATER RESOURCES DEPT
SALEM, OREGON

Camp Tadmor
43943 McDowell Creek Dr.
Lebanon, OR 97355

Approved as corrected
by David R. B...
12/19/13



T 13 S, R 1 E Sec 2

1" = 400'

Well 1 385' N, 595' W

Well 2 1370' N, 195' W

1080
both from E 1/4 corner

Sec 2

All on TAX Lot 800

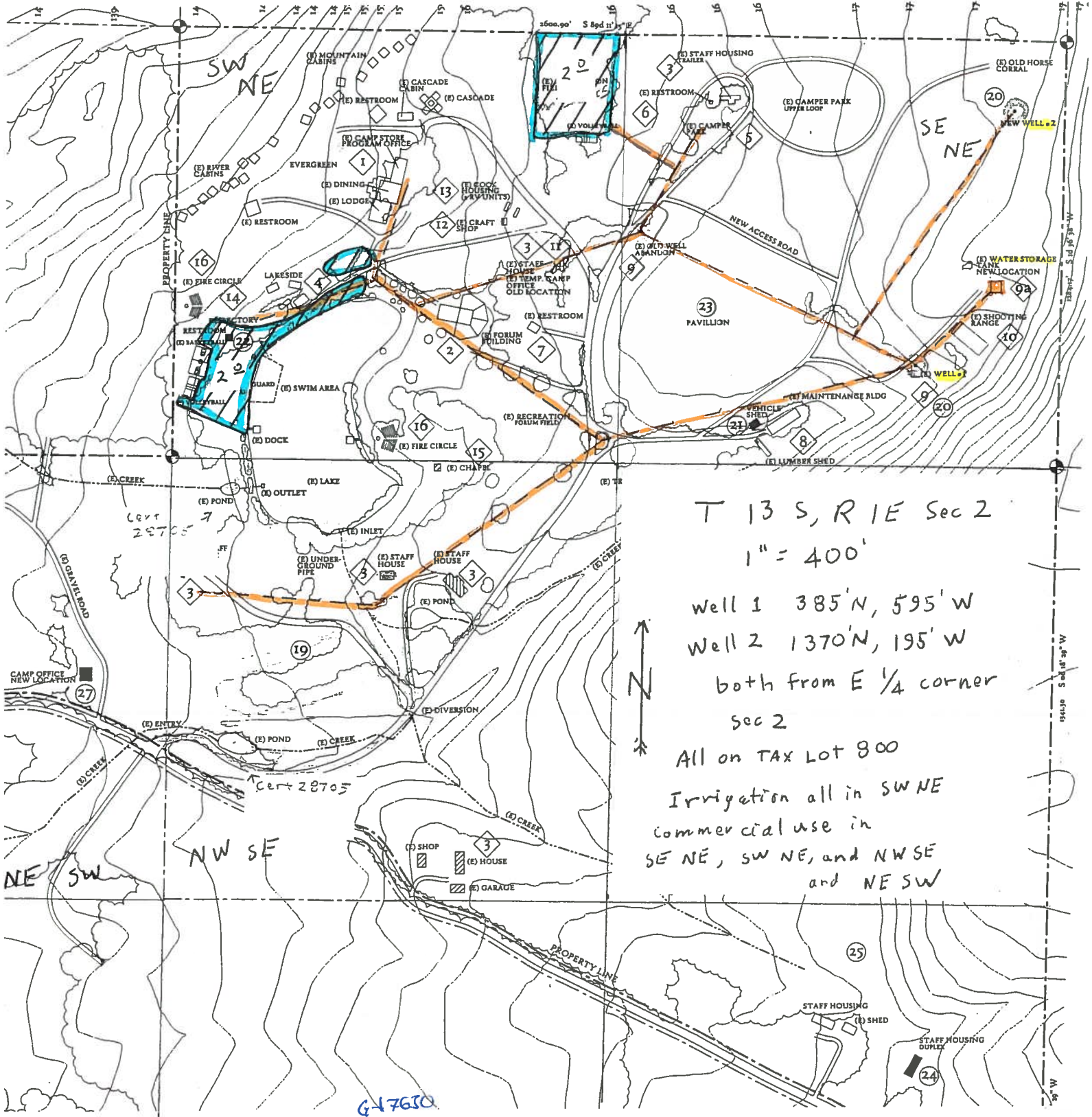
Irrigation all in SW NE
Commercial use in
SE NE, SW NE, and NW SE
and NE SW

Superseded 12-19-14

RECEIVED

FEB 13 2013

WATER RESOURCES DEPT
SALEM, OREGON



T 13 S, R 1 E Sec 2
1" = 400'

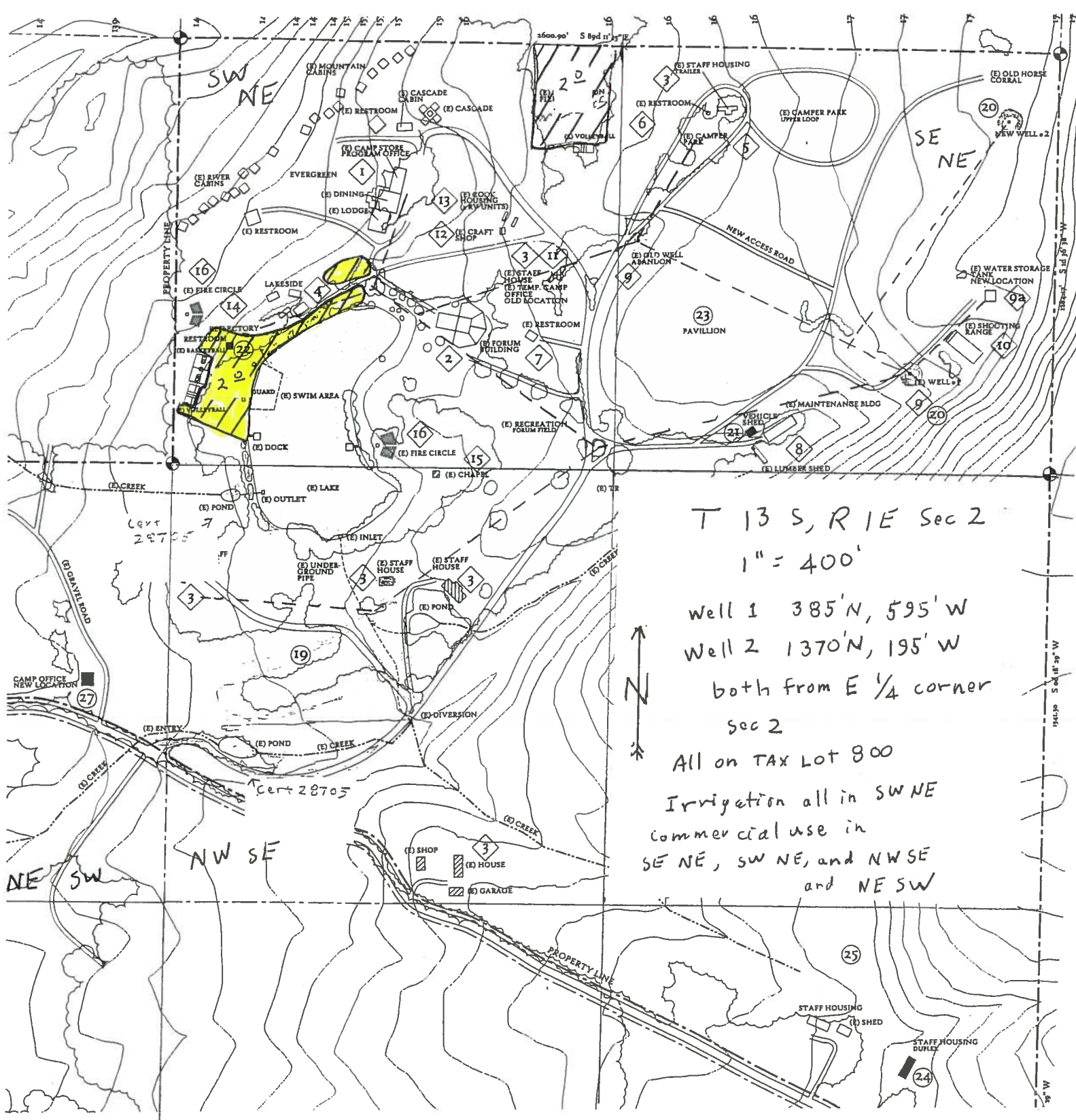
Well 1 385' N, 595' W
Well 2 1370' N, 195' W

both from E 1/4 corner
Sec 2

All on TAX Lot 800

Irrigation all in SW NE
Commercial use in
SE NE, SW NE, and NW SE
and NE SW

G-17630



T 13 S, R 1 E Sec 2
 1" = 400'

Well 1 385' N, 595' W
 Well 2 1370' N, 195' W

both from E 1/4 corner
 sec 2

All on TAX LOT 800

Irrigation all in SW NE
 commercial use in
 SE NE, SW NE, and NW SE
 and NE SW

