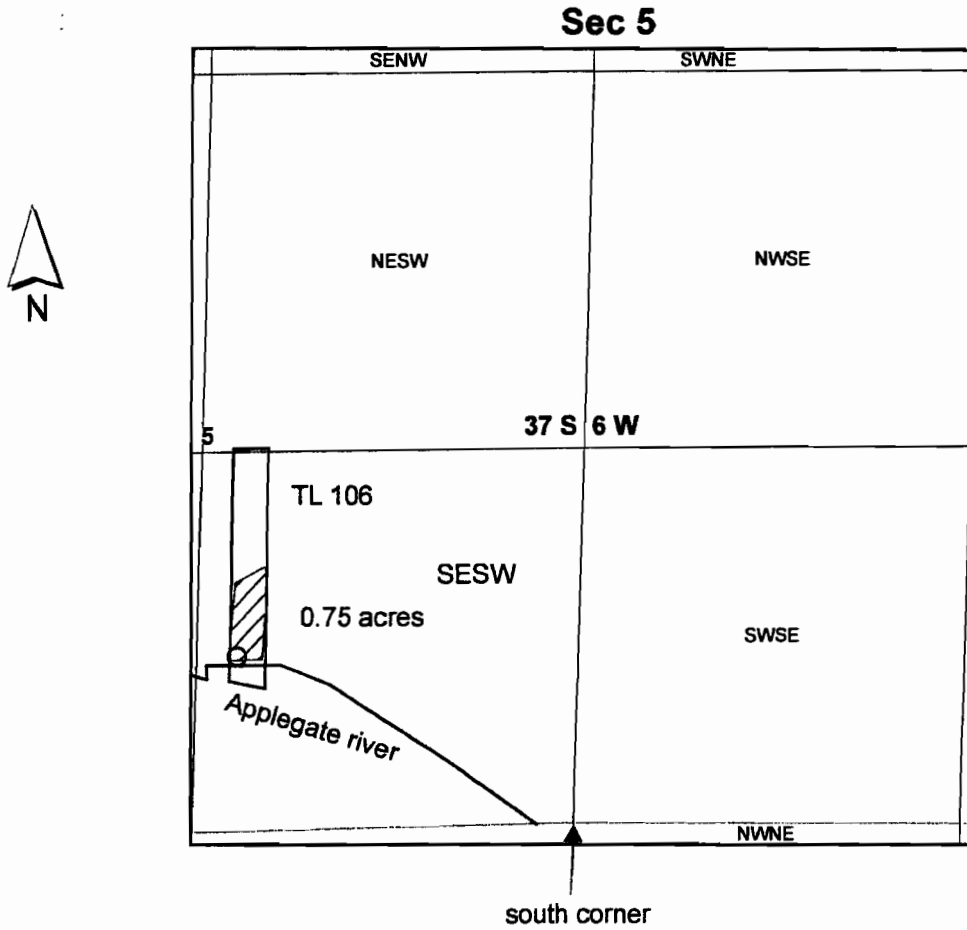


T37S R6W



1 inch = 660 feet

POD is 595 ft north and 1182 ft west from south corner.

RECEIVED BY OWRD

MAR 06 2013

SALEM, OR

(Applegate Reservoir is located in the
S 1/2 SE T40S R4W Sec 25) S-87876

RECEIVED BY OWRD

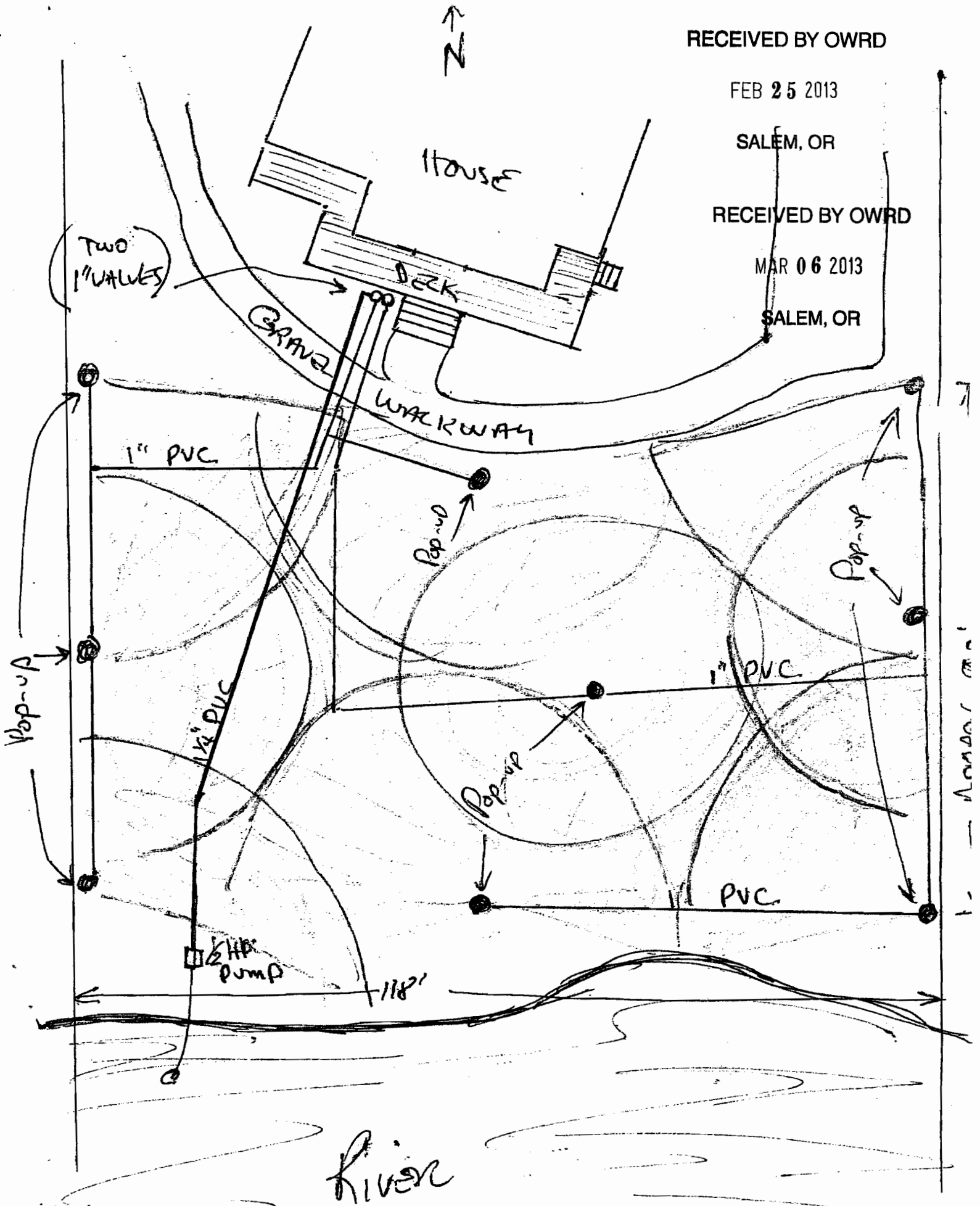
FEB 25 2013

SALEM, OR

RECEIVED BY OWRD

MAR 06 2013

SALEM, OR



River

S-87076

★ NOT TO SCALE.

1 - 1/2" diameter pipe