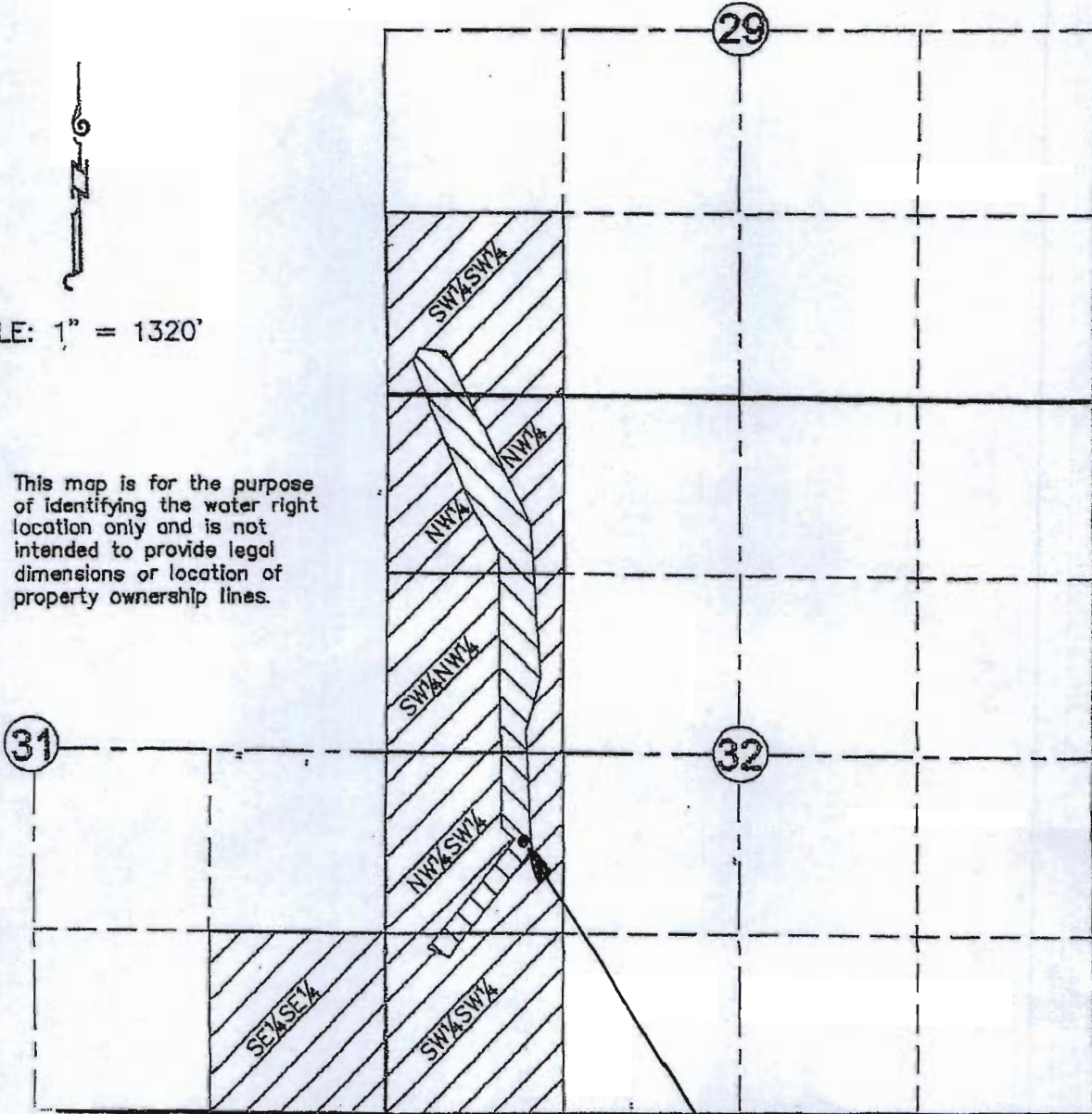


T. 13 S., R. 41 E., W.M.



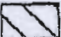
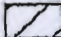
SCALE: 1" = 1320'

This map is for the purpose of identifying the water right location only and is not intended to provide legal dimensions or location of property ownership lines.



Well located in the
NW1/4SW1/4 Sec. 32,
2006' N. & 1005'E. from
The SW Cor. Sec. 32

LEGEND

-  Private Lands Mined
-  BLM Lands Mined

G-17-635

RECEIVED BY OWRD

MAR 08 2013

SALEM, OR

Malheur Queen Placer Project, Project Boundary and Land Status

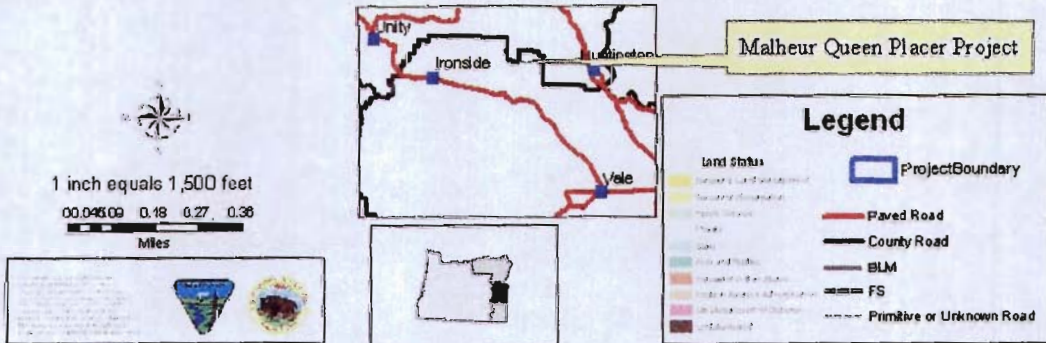
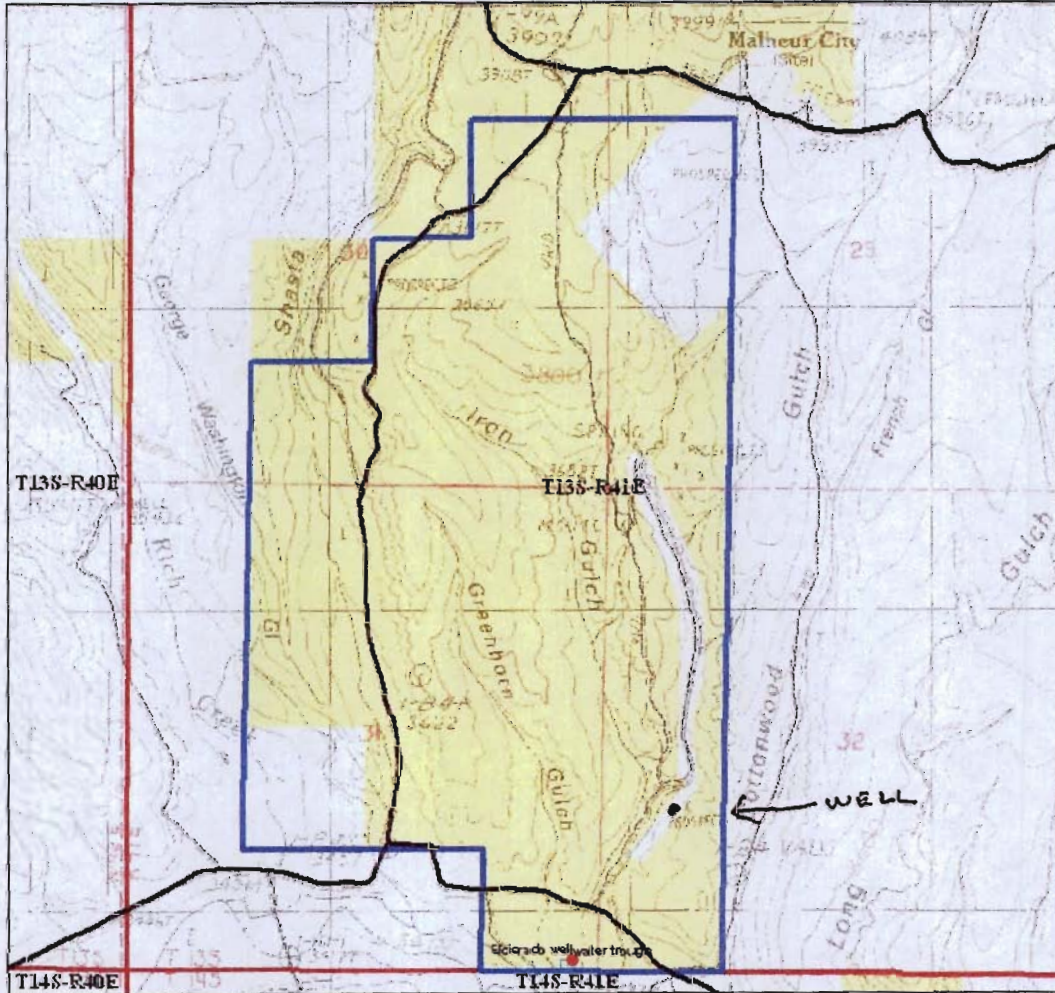


Figure 1: Malheur Queen Placer Project, Location and Overview

G-17635

RECEIVED BY OWRD

MAR 08 2013

SALEM, OR

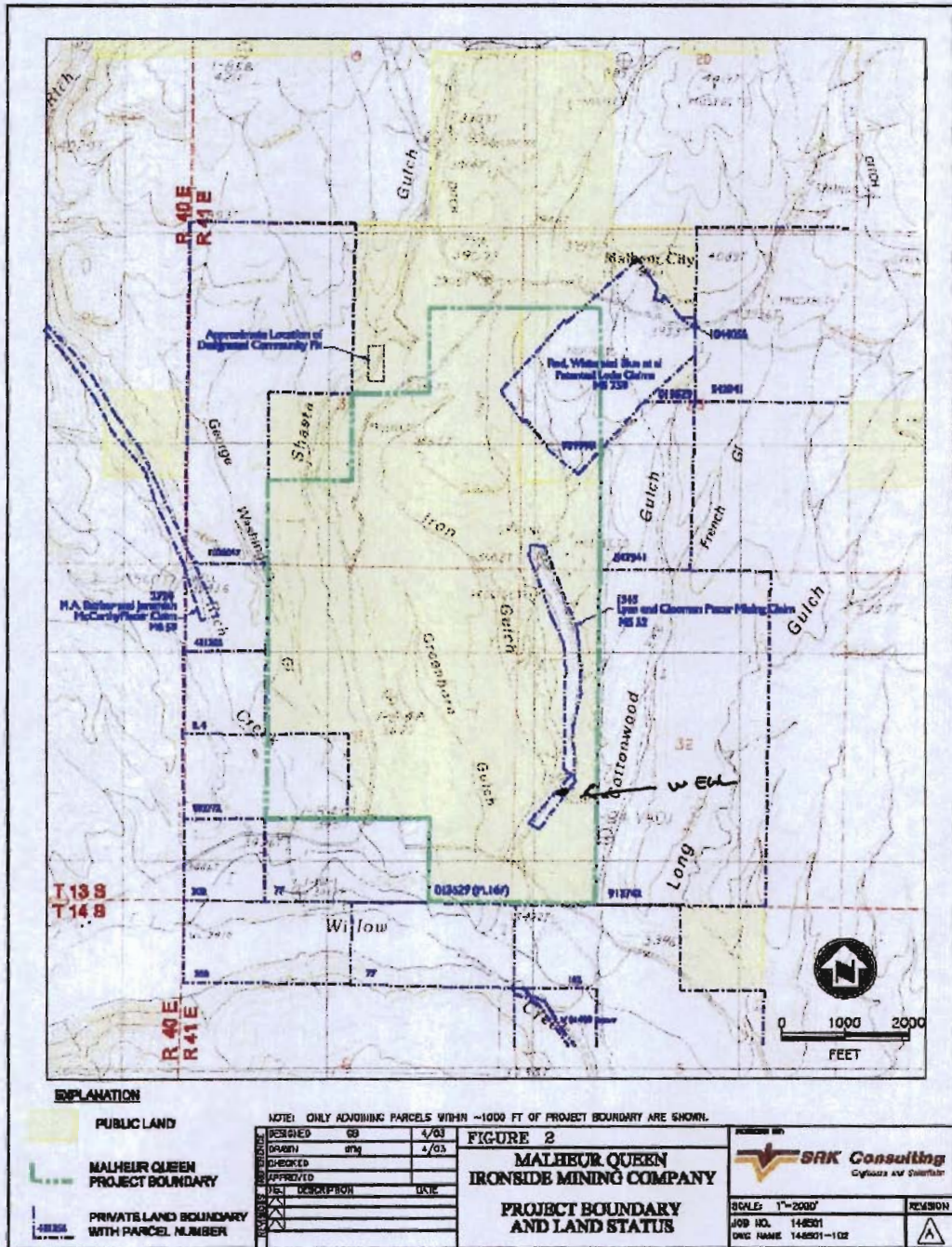


Figure 2: Malheur Queen Project Boundary and Land Status (from SRK POO)

G-17635

RECEIVED BY OWRD
MAR 08 2013
SALEM, OR