

CUNNINGHAM SHEEP WEST BIRCH CREEK RANCH

GROUND WATER APPLICATION MAP #1

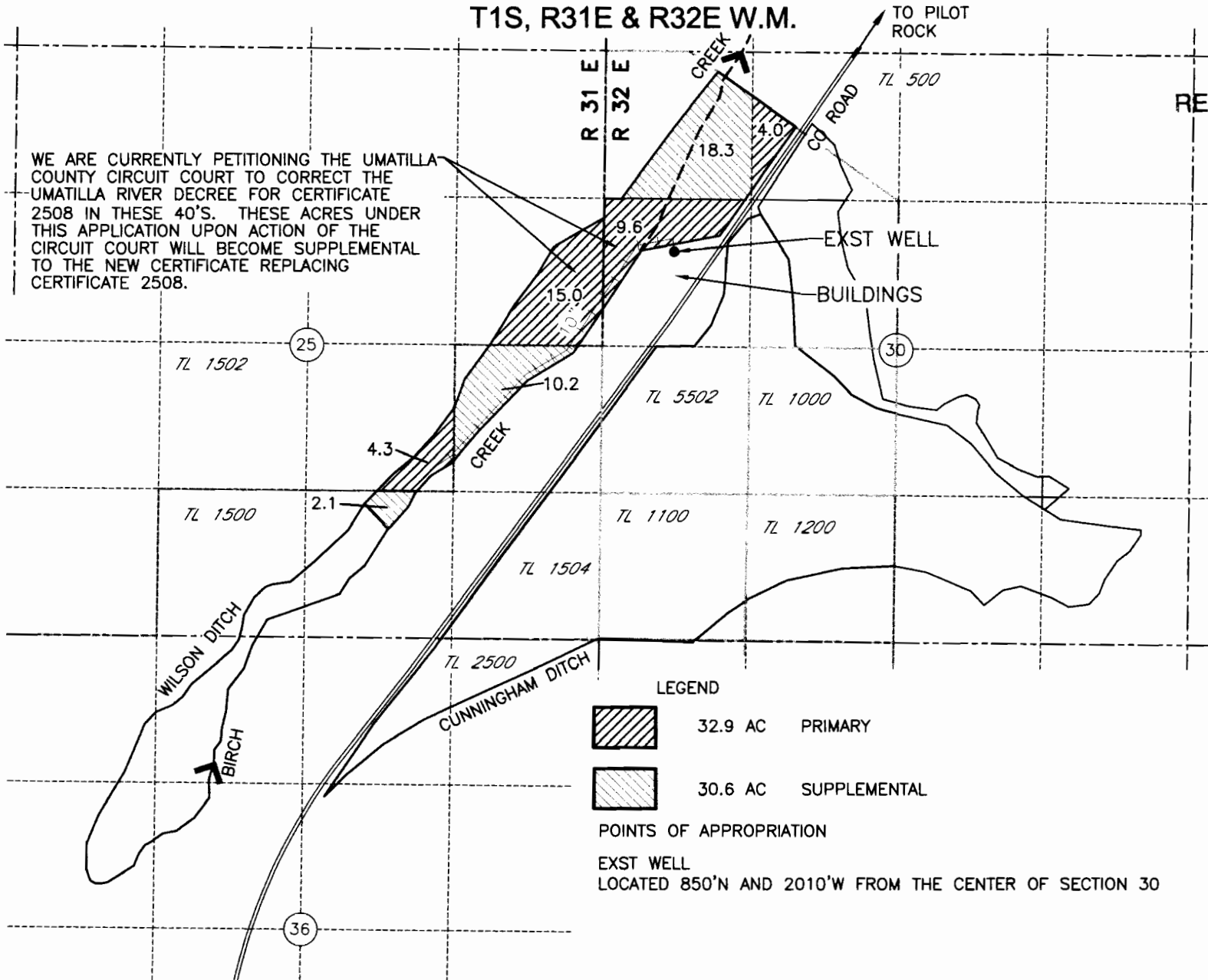
T1S, R31E & R32E W.M.

WE ARE CURRENTLY PETITIONING THE UMATILLA COUNTY CIRCUIT COURT TO CORRECT THE UMATILLA RIVER DECREE FOR CERTIFICATE 2508 IN THESE 40'S. THESE ACRES UNDER THIS APPLICATION UPON ACTION OF THE CIRCUIT COURT WILL BECOME SUPPLEMENTAL TO THE NEW CERTIFICATE REPLACING CERTIFICATE 2508.

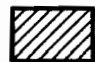
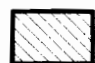
RECEIVED BY OWRD

MAR 25 2013

SALEM, OR



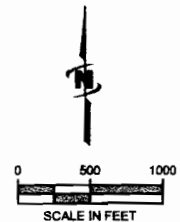
LEGEND

-  32.9 AC PRIMARY
-  30.6 AC SUPPLEMENTAL

POINTS OF APPROPRIATION

EXST WELL

LOCATED 850'N AND 2010'W FROM THE CENTER OF SECTION 30



G-17640