

FRED @ Charlotte Teutsch
Application MAP.

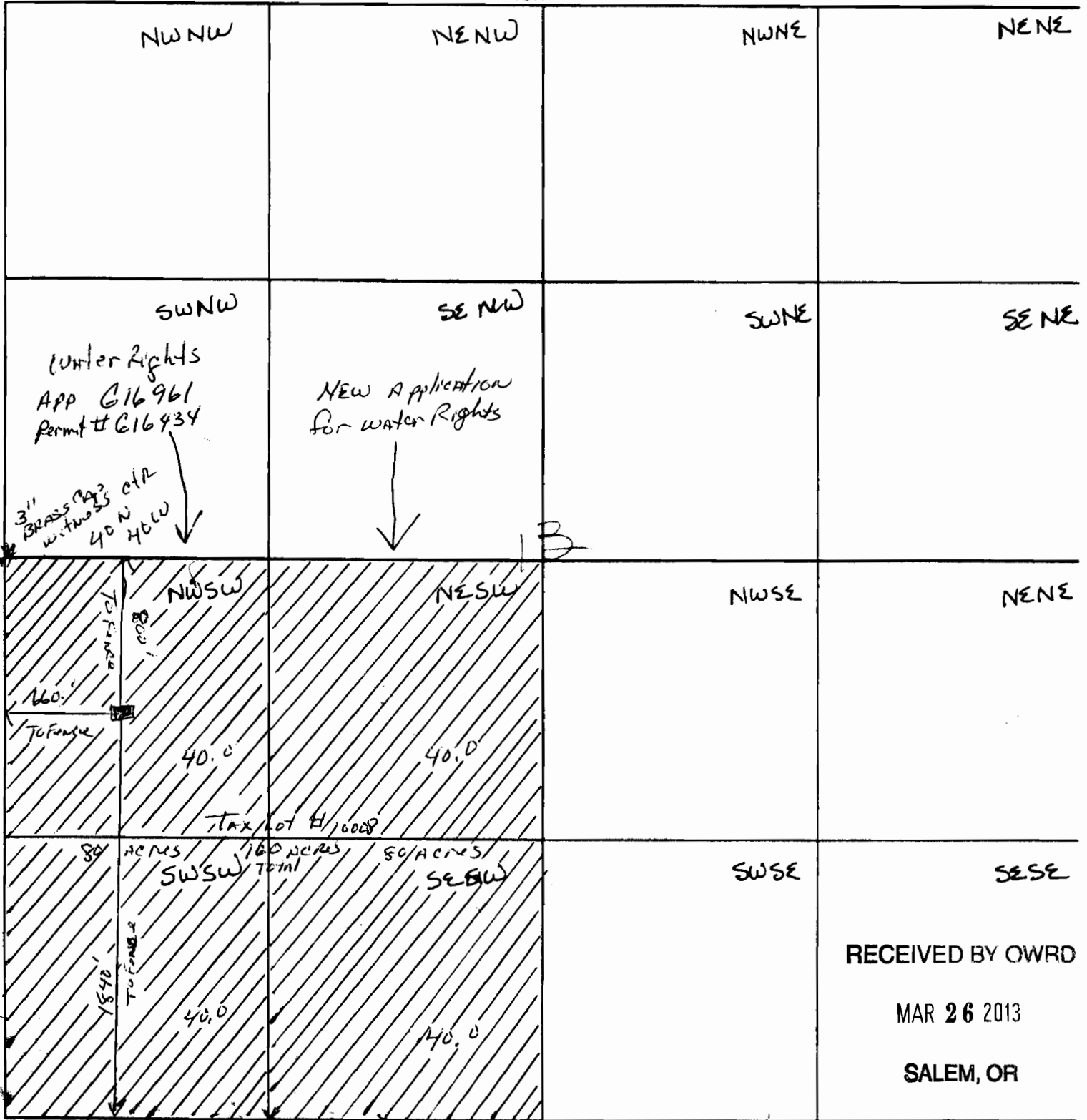
SECTION PLAT

Section 13 Township T23S Range R32,5E

County of HARNEY State of OREGON



NORTH



RECEIVED BY OWRD
MAR 26 2013
SALEM, OR

3" BRASS CAP witness c.12.

4" = 1 mile

0

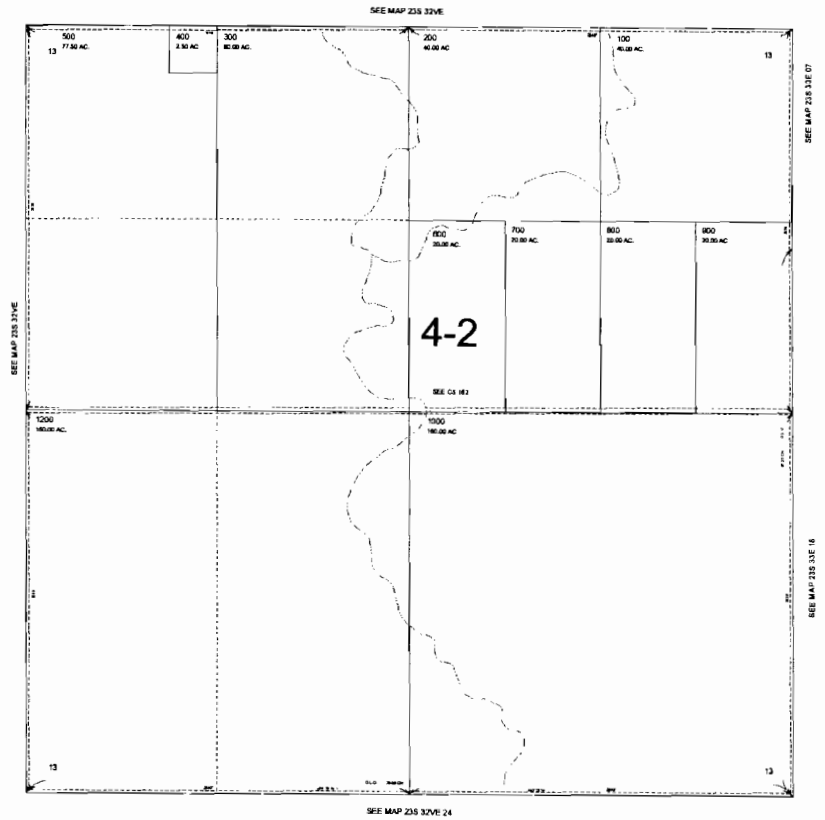
THIS MAP WAS PREPARED FOR
ASSESSMENT PURPOSE ONLY



SECTION 13 T.23S. R.32 1/2E. W.M.
HARNEY COUNTY
1" = 400'

23S 32VE 13

CANCELLED NO.
1100 (2010)



PRINTED ON
Mar 29, 2010
23S 32VE 13

Harney County
Real Legal Descriptions

3/22/2013 1:22:59 PM

Account # 10008

Map 23S32V1300-01200

Effective Date 01-Aug-2010 12:00 AM

Disclaimer This information is maintained for assessment and taxation purposes only. The county is not responsible for possible errors, omissions, misuse, or misinterpretation. The legal description shown will not show any changes and/or modifications thereto subsequent to the EFFECTIVE DATE.

Subdivision	Block	Lot	Direction	Part	Part Type
--------------------	--------------	------------	------------------	-------------	------------------

Metes and Bounds

T 23 S., R 32V E., W.M. SEC 13 TL 1200
LAND IN HARNEY COUNTY, OREGON, AS FOLLOWS:
IN TOWNSHIP 23 S., RANGE 32 1/2 E., W.M.
SECTION 13: SW1/4

RECEIVED BY OWRD

MAR 26 2013

SALEM, OR