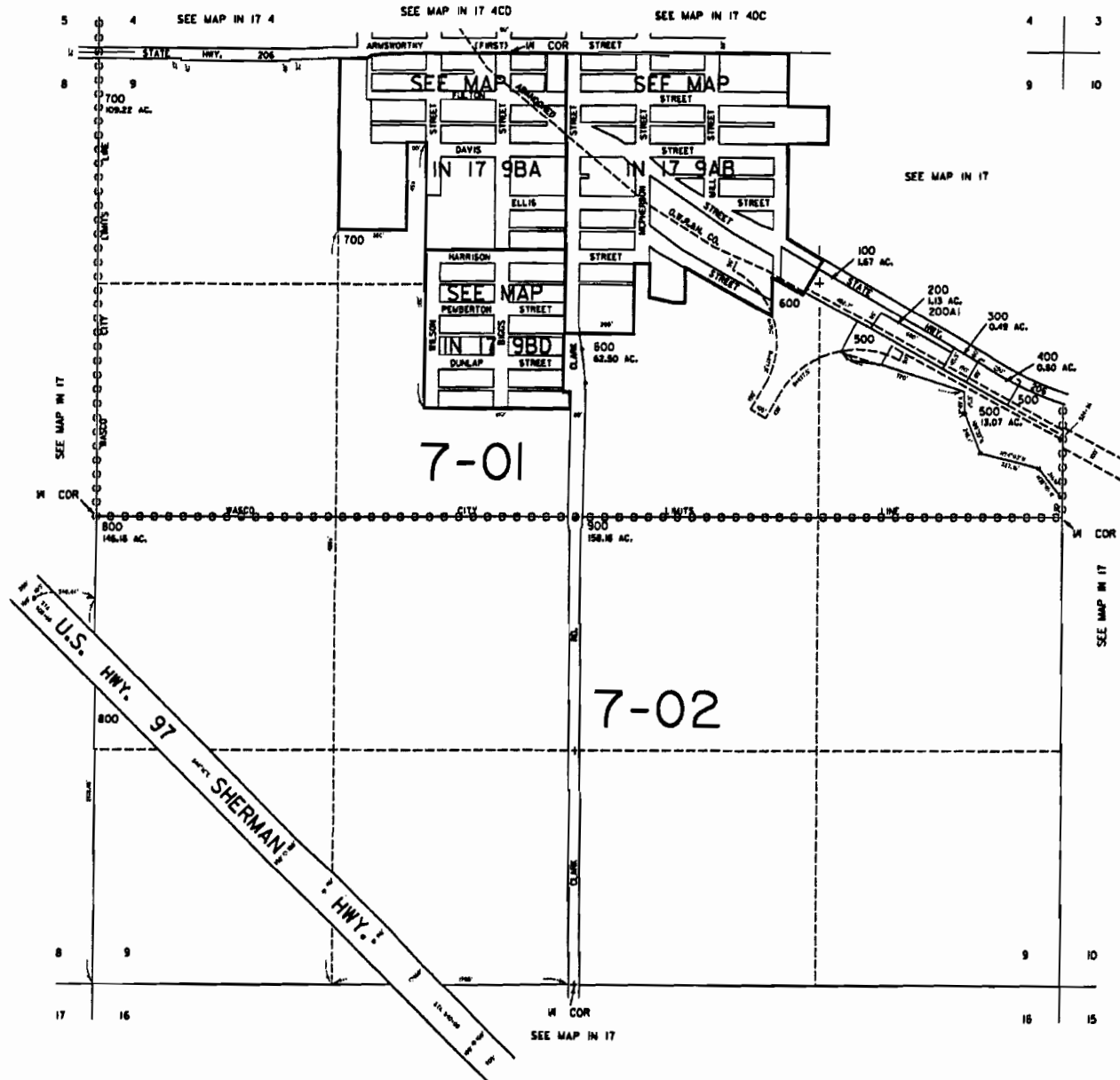


THIS MAP WAS PREPARED FOR  
ASSESSMENT PURPOSE ONLY

SECTION 9 T.1N. R.17E. W.M.  
SHERMAN COUNTY  
1" = 400'

IN 17 9  
& INDEX  
WASCO



IN 17 9  
& INDEX  
WASCO

**RECEIVED**  
DEC 07 2006  
WATER RESOURCES DEPT  
SALEM, OREGON