

10018-5

LEGEND

- Point of Diversion (POD)
- Place of Use (POU)
- Source Output
- Conveyance Pipeline
- Tax Lots
- Counties
- DLCs
- Roads
- Water Courses
- Water Bodies

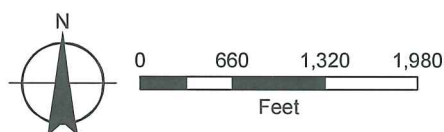
MAP NOTES:
 Date: December 7, 2012
 Data Sources: Polk Co GIS, OGIC, ESRI, Bing Maps

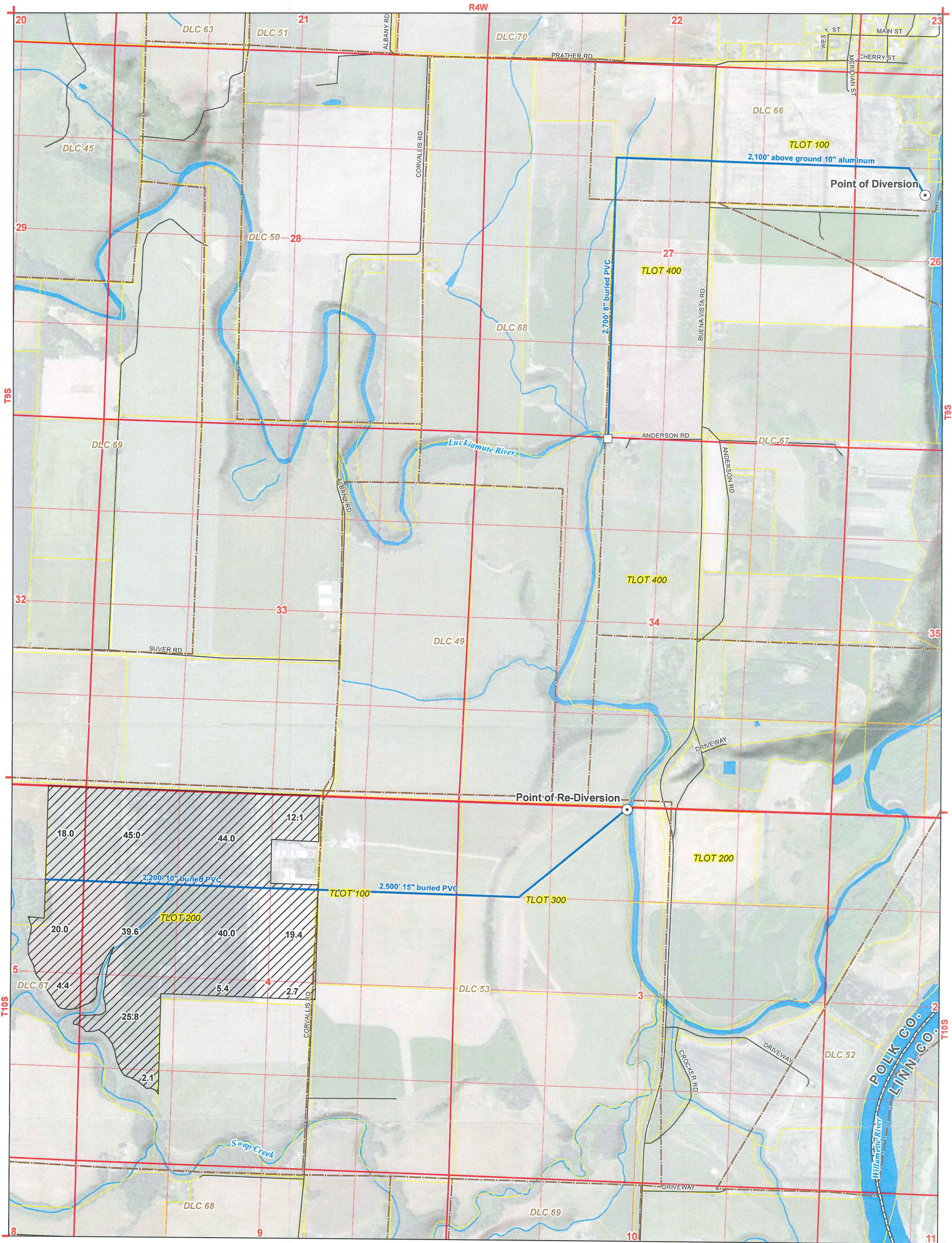
POD LOCATION DESCRIPTIONS:

Point of Diversion: 1650' S and 1000' E from the SW Corner Section 23, T9S, R4W, W.M.
Point of Re-Diversion: 60' S and 650' W From the NE Corner of DLC 53 (NE quarter NW quarter Section 3) of T10S, R4W, W.M.

Application for a Water Use Permit

Olsen Agriculture Enterprises
 Townships 9 & 10 South, Range 4 West (W.M.)





h6878-5

- LEGEND**
- Point of Diversion (POD)
 - Place of Use (POU)
 - Source Output
 - Conveyance Pipeline
 - Tax Lots
 - Counties
 - DLCs
 - Roads
 - Water Courses
 - Water Bodies

POD LOCATION DESCRIPTIONS:
Point of Diversion: 1650' S and 1000' E from the SW Corner Section 23, T9S, R4W, W.M.
Point of Re-Diversion: 60' S and 650' W From the NE Corner of DLC 53 (NE quarter NW quarter Section 3) of T10S, R4W, W.M.

Application for a Water Use Permit
Olsen Agriculture Enterprises
 Townships 9 & 10 South, Range 4 West (W.M.)

MAP NOTES:
 Date: December 7, 2012
 Data Sources: Polk Co GIS, OGIC, ESRI, Bing Maps

