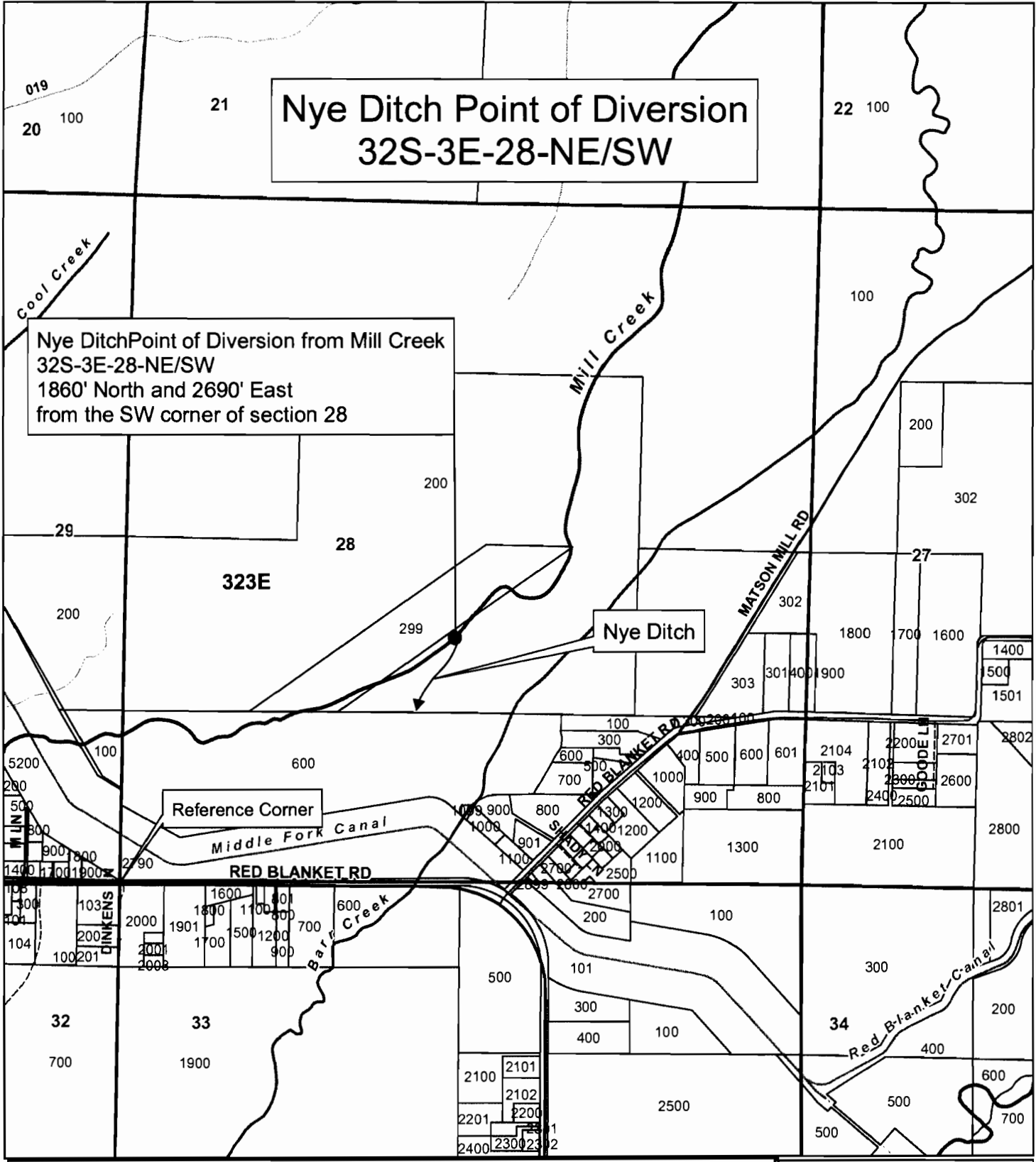


# Nye Ditch Point of Diversion 32S-3E-28-NE/SW

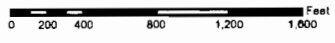
Nye Ditch Point of Diversion from Mill Creek  
32S-3E-28-NE/SW  
1860' North and 2690' East  
from the SW corner of section 28



### Legend

- Taxlots
- Sections
- Townships
- Nye Ditch
- Nye Ditch POD

1 inch = 1,000 feet



APR 26 2013

**JACKSON COUNTY  
WATERMASTER**

Prepared by Travis Kelly

This map is based on a digital database compiled by Jackson County from a variety of sources. Jackson County cannot accept responsibility for errors, omissions, or positional accuracy. There are no warranties, expressed or implied.

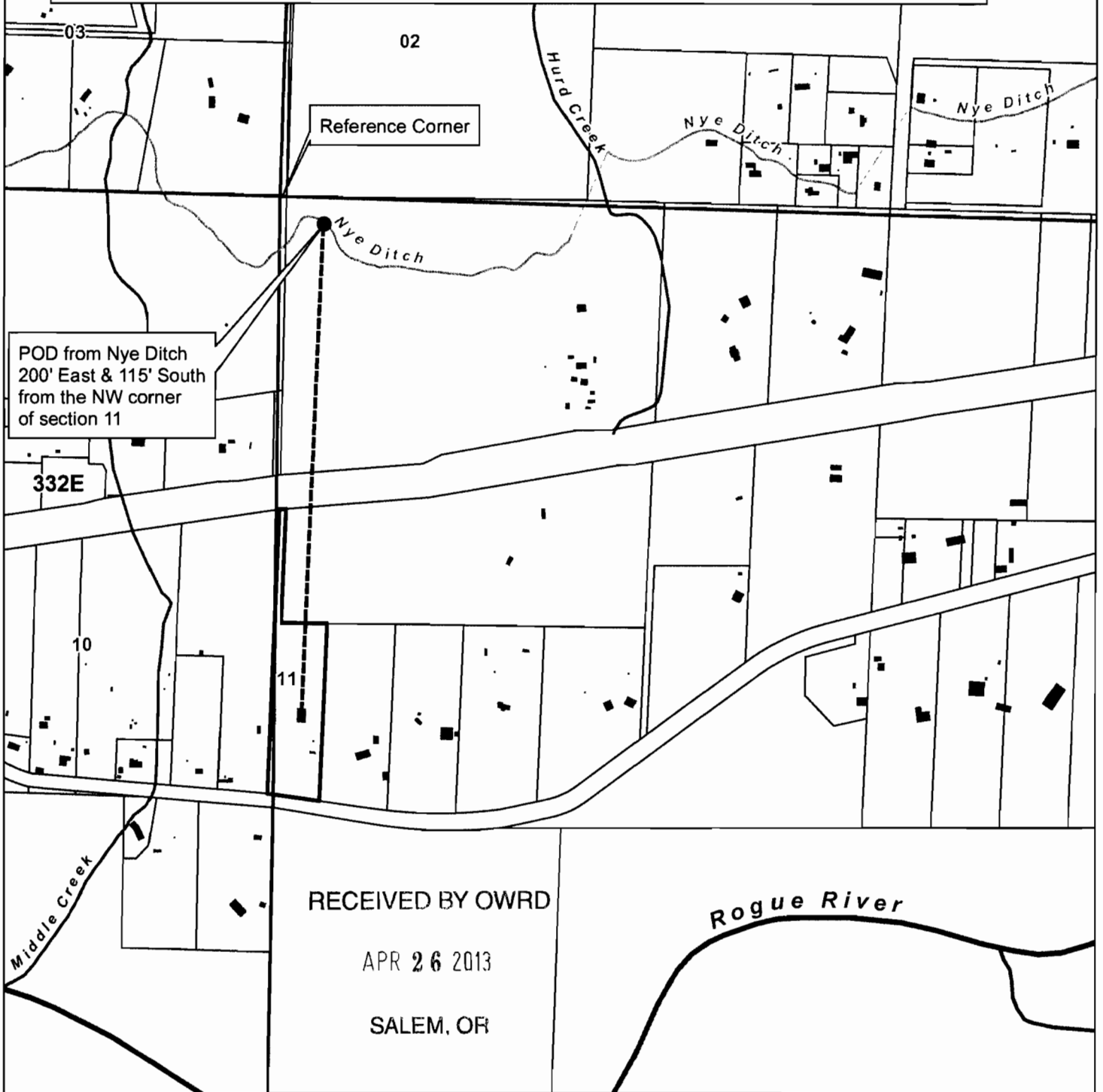
Date: 04/23/2013; 32-3E-28-NE-SW Nye Ditch POD.mxd; Kelly\TN

S-87875

SALEM, OR

# Human Consumption Place of Use Map

## 33S-2E-11-SW/NW Tax Lot 2510



RECEIVED BY OWRD

APR 26 2013

SALEM, OR

### Legend

- Taxlot 2510
- Sections
- Taxlots
- Building Footprints
- Townships
- 4" PVC Pipe
- Point of Diversion



1 inch = 600 feet



JACKSON COUNTY  
**WATERMASTER**

Prepared by Travis Kelly

This map is based on a digital database compiled by Jackson County from a variety of sources. Jackson County cannot accept responsibility for errors, omissions, or positional accuracy. There are no warranties, expressed or implied.

Date: 04/23/2013, 33-2E-11-SW-NW Taxlot2510 Vaglia.mxd, Kelly/TN

S-87895