

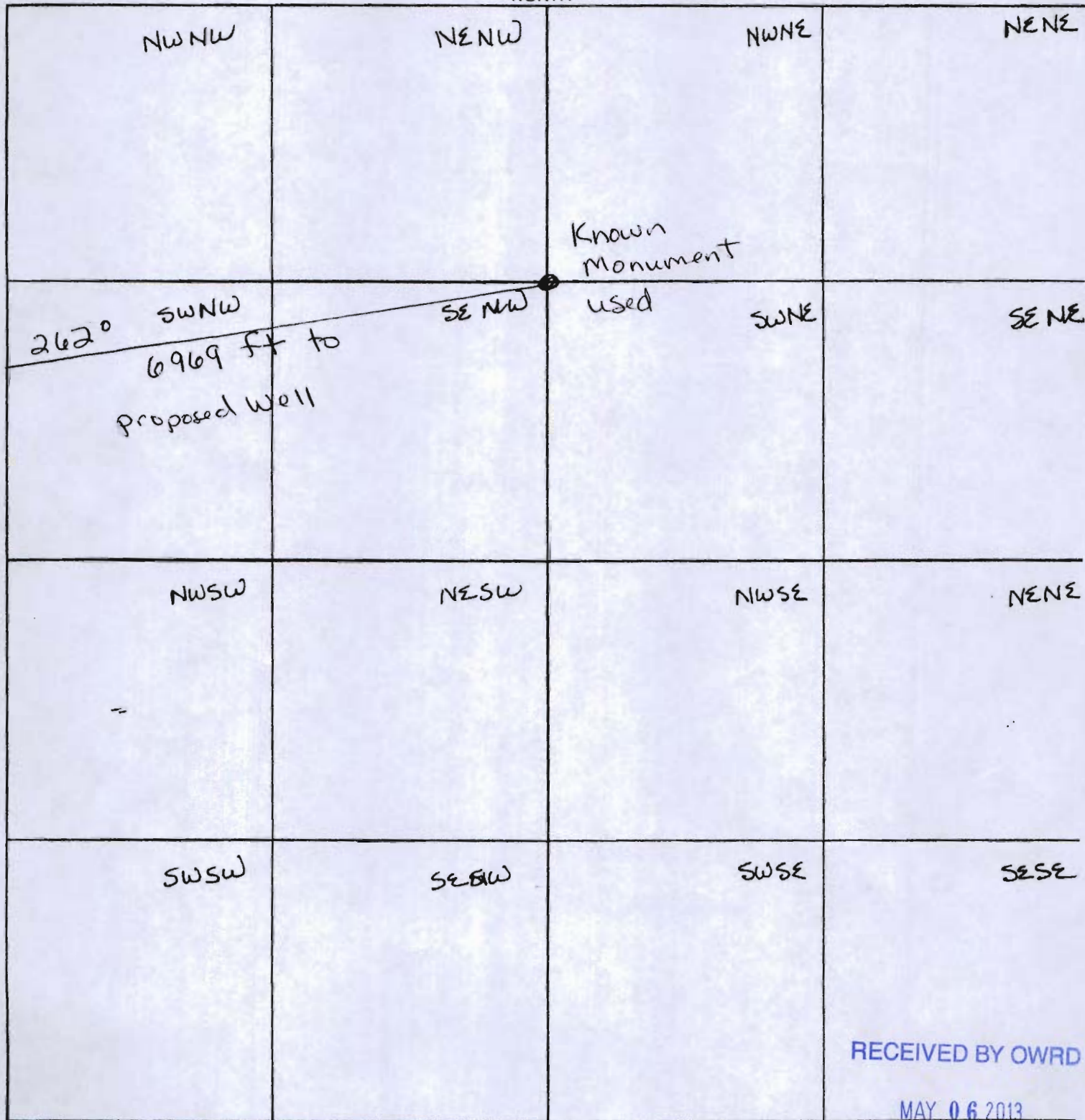
SECTION PLAT



Section 31 Township 19S Range 36E

County of Harney State of Oregon

NORTH



RECEIVED BY OWRD

MAY 06 2013

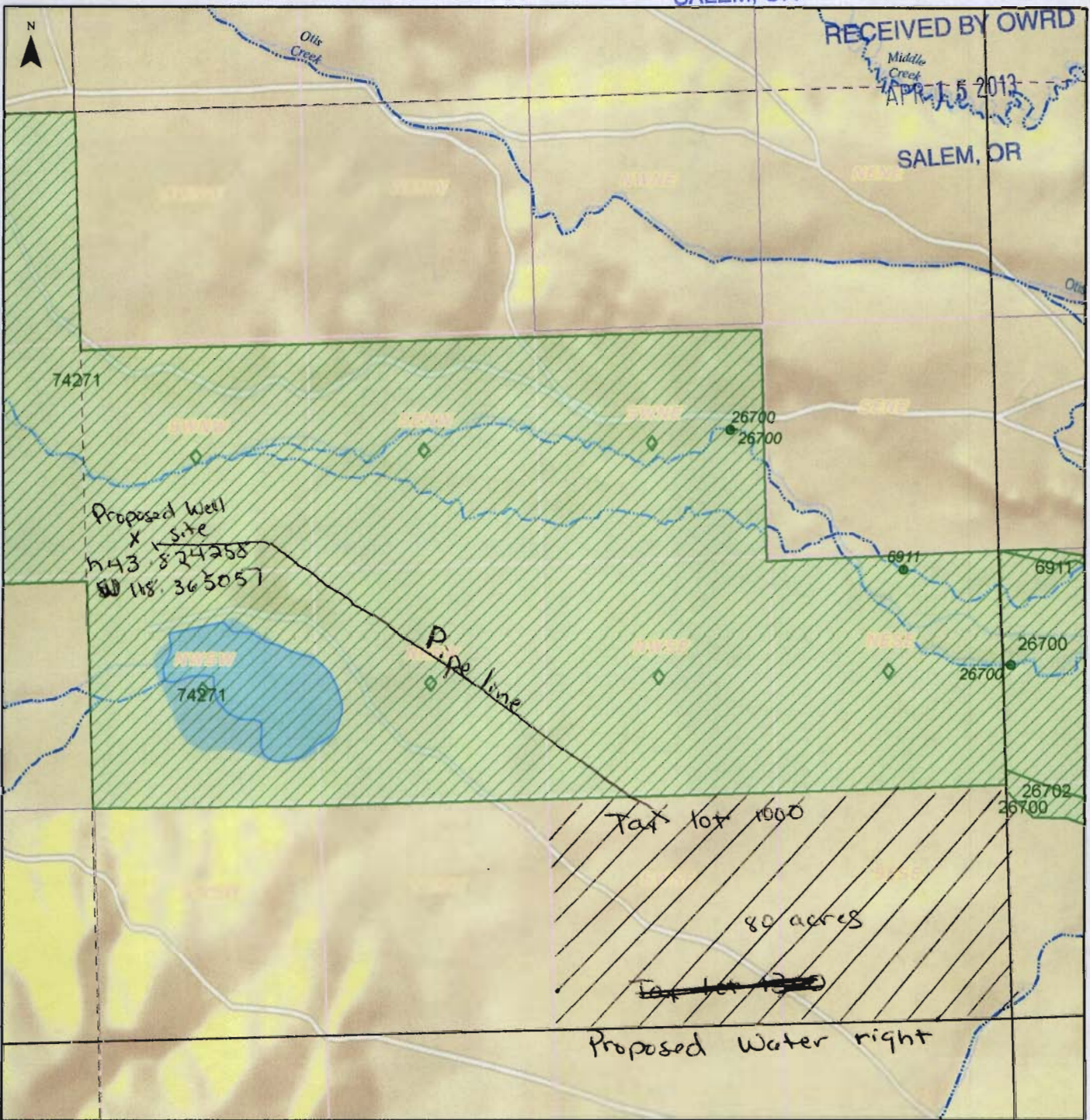
4" = 1 mile

G-17669

SALEM, OR



SALEM, OR



0 1,000 Feet

Legend

Index Map

For more information:
<http://www.wrd.state.or.us> and
<http://apps.wrd.state.or.us/apps/wr/wrinfo/>

This map is for informal purposes only.
It is not intended for legal, engineering or
surveying purposes. Municipal rights are
not included on this map.

Points of Diversion	Places of Use
● 75030	75030 Storage water
● 24883	24883 Surface water
● 24883	24883 Ground water

◆ Water Rights - Outline to be determined. (Applies to all colors)
Water right labels indicate certificate number or permit letter(s) and number. Municipality uses excluded.



Ge-17669

SECTION PLAT

^
^

Section 1 Township 20 Range 39

County of Harney State of OR

NORTH

NW NW	NE NW	NW NE Tax lot 80 acres	NE NE 100 100
SW NW	SE NW	Proposed water right SW NE	SE NE RECEIVED BY OWRD APR 15 2013 SALEM, OR
NWSW	NESW	NW SE	NE NE
SWSW	SE SW	SW SE	SE SE RECEIVED BY OWRD MAY 06 2013

G-17669

4" = 1 mile

SALEM, OR



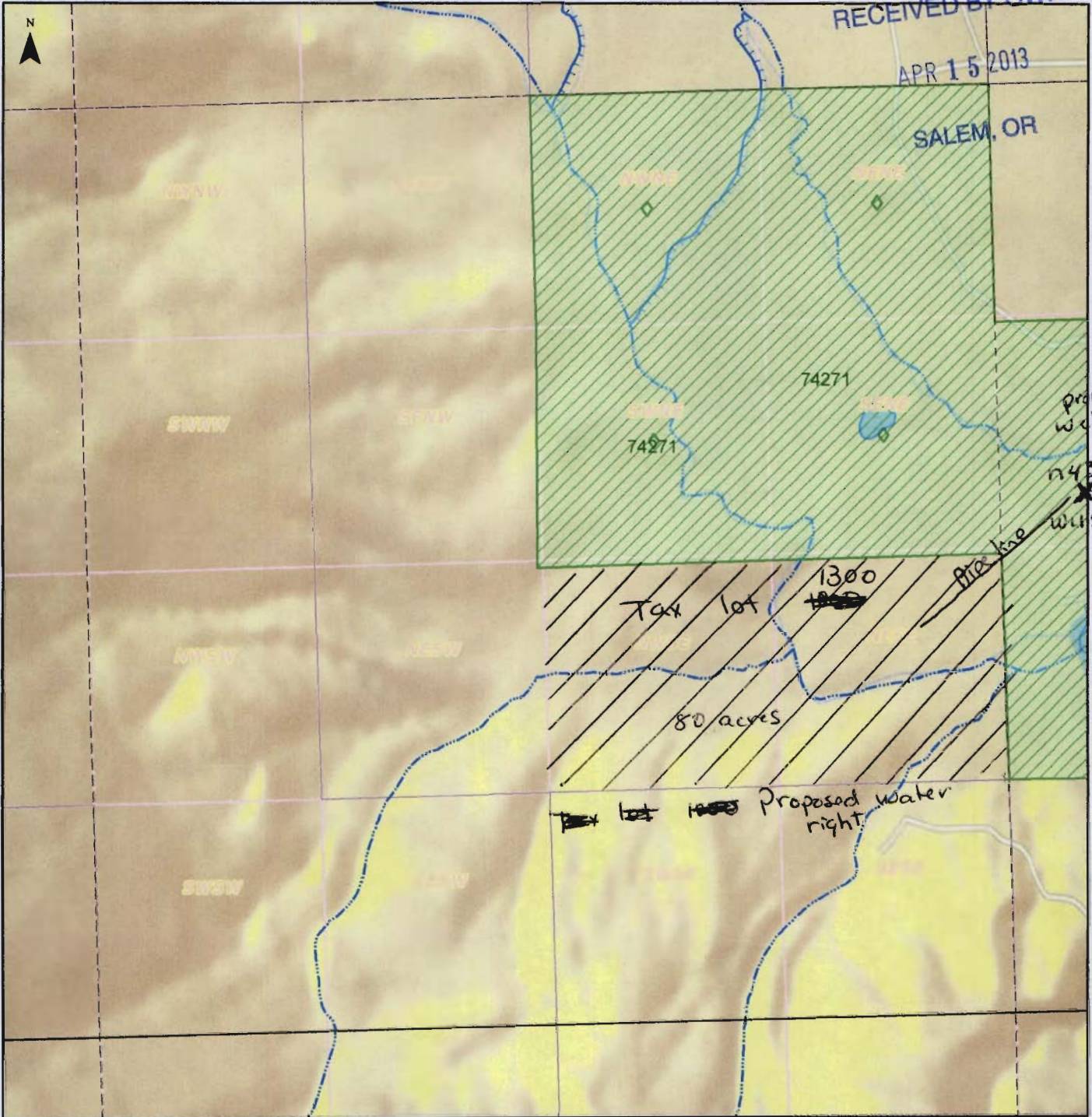
MAY 06 2013

19 S 35 E 35

Map Date: July 17, 2012

SALEM, OR

RECEIVED BY OWRD
APR 15 2013



Proposed well site
 1243 874258
 365057

0 1,000 Feet

Legend

Index Map

For more information:
<http://www.wrd.state.or.us> and
<http://apps.wrd.state.or.us/apps/wr/wrinfo/>

This map is for informal purposes only.
 It is not intended for legal, engineering or
 surveying purposes. Municipal rights are
 not included on this map.

Points of Diversion	Places of Use
● 75030	75030 Storage water
● 24883	24883 Surface water
● 24883	24883 Ground water

◇ Water Rights - Outline to be determined. (Applies to all colors)
 Water right labels indicate certificate number or permit letter(s) and number. Municipality uses excluded.



Gr-17669