

T. 3 S. R. 2 W. W. M.

N

Tabulated Acres

NE, SW 2.5

SE, SW 20.0

SE, SE 12.5

Section 27

NW, NW 22.0

SW, NW 6.75

NE, NE 13.0

SW, NE 5.5

NE, NW 14.1

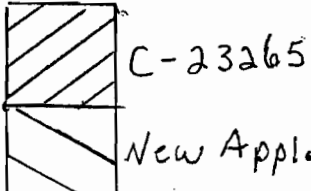
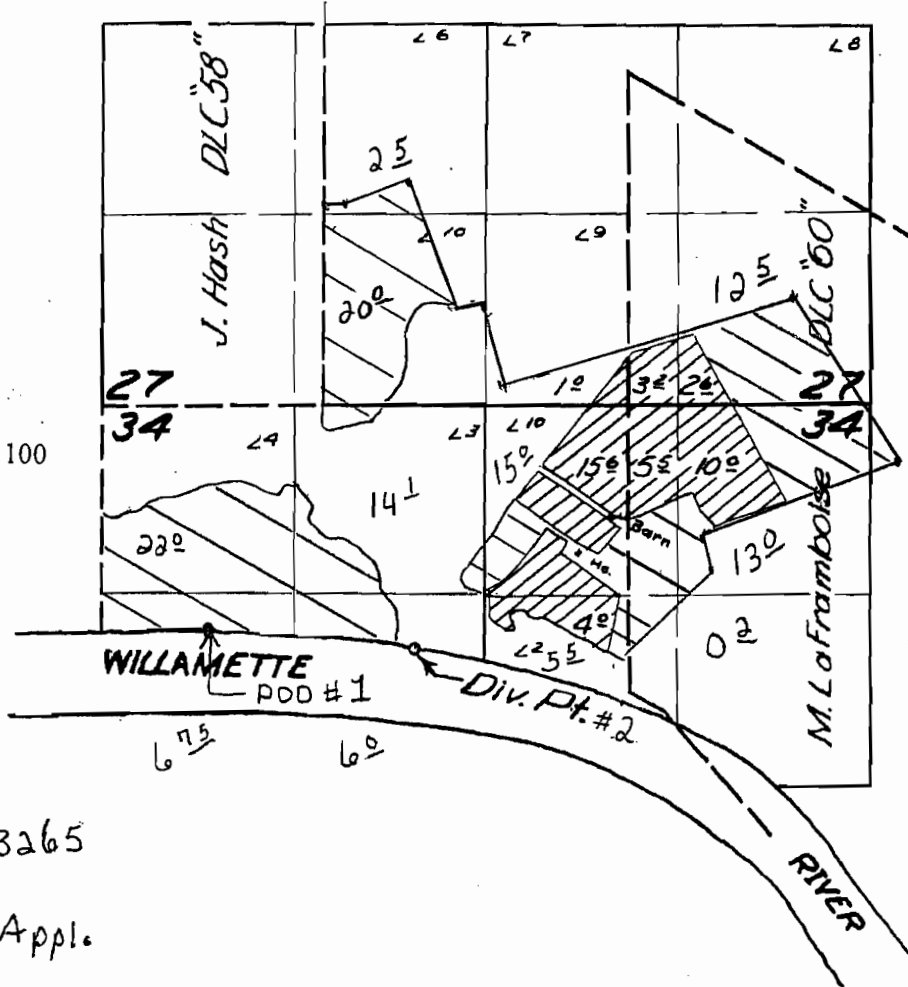
SE, NW 6.0

NW, NE 15.0

SE, NE 0.2

Section 34

T. 3 S. R. 2 W TL 100



**FINAL PROOF SURVEY**

UNDER

POD #1 1545' S. and 845' E.  
POD #2 1630' S. and 2170' E.  
From NW Cor. Sec. 34

Application No. 28509 Permit No. 22318.

IN NAME OF

C. M. Bishop

Surveyed Mar. 19 1956, by Tom Bishop

1" = 1320'

DFQ-2D-3

RECEIVED BY OWRD

MAY 06 2013

SALEM, OR

S-87897