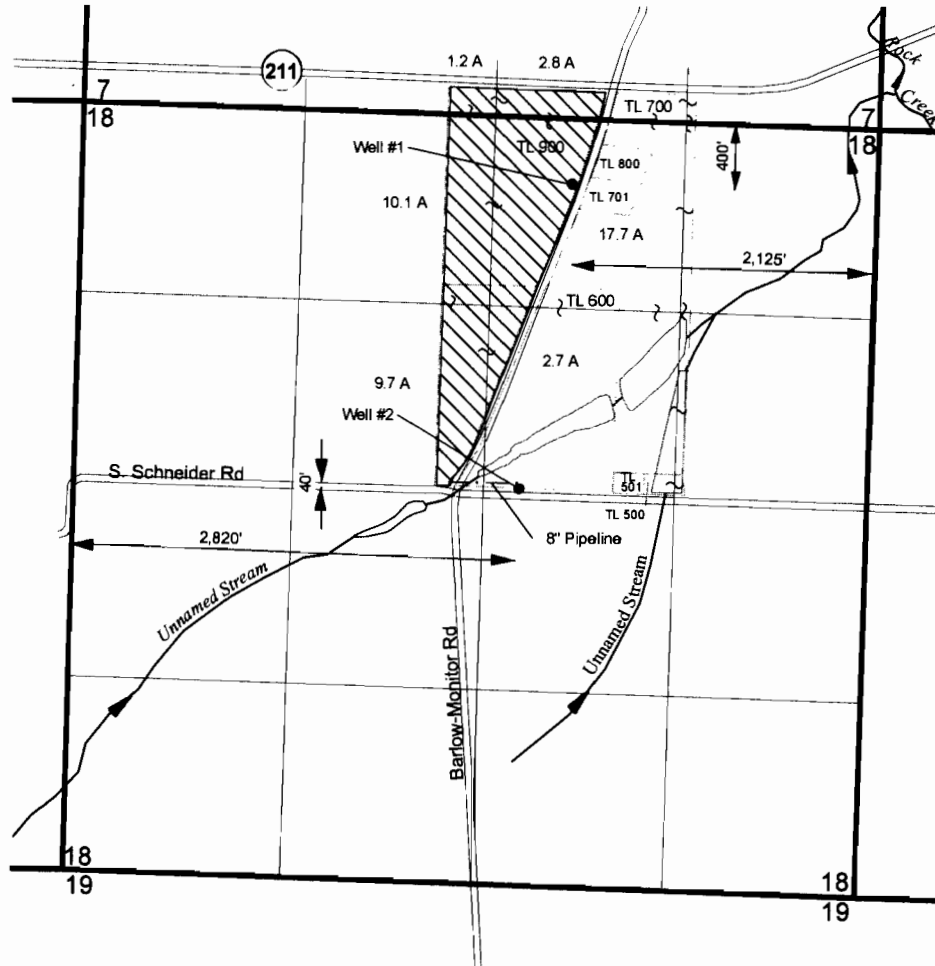


Sections 7 & 18, T5S, R1E, WM Clackamas County, Oregon



EXPLANATION

- Proposed Place of Use (Nursery)
44.2 acres
- Proposed Wells

THIS MAP IS NOT INTENDED TO
PROVIDE LEGAL DIMENSIONS OR
LOCATIONS OF PROPERTY
OWNERSHIP LINES.

April 15, 2013

SKOOKUM
WATER ASSOCIATES INC

G-17680

RECEIVED BY OWRD

APR 15 2013

SALE

1 inch = 1,320 feet

FIGURE 1

**Barlow Oaks LLC
Application Map**