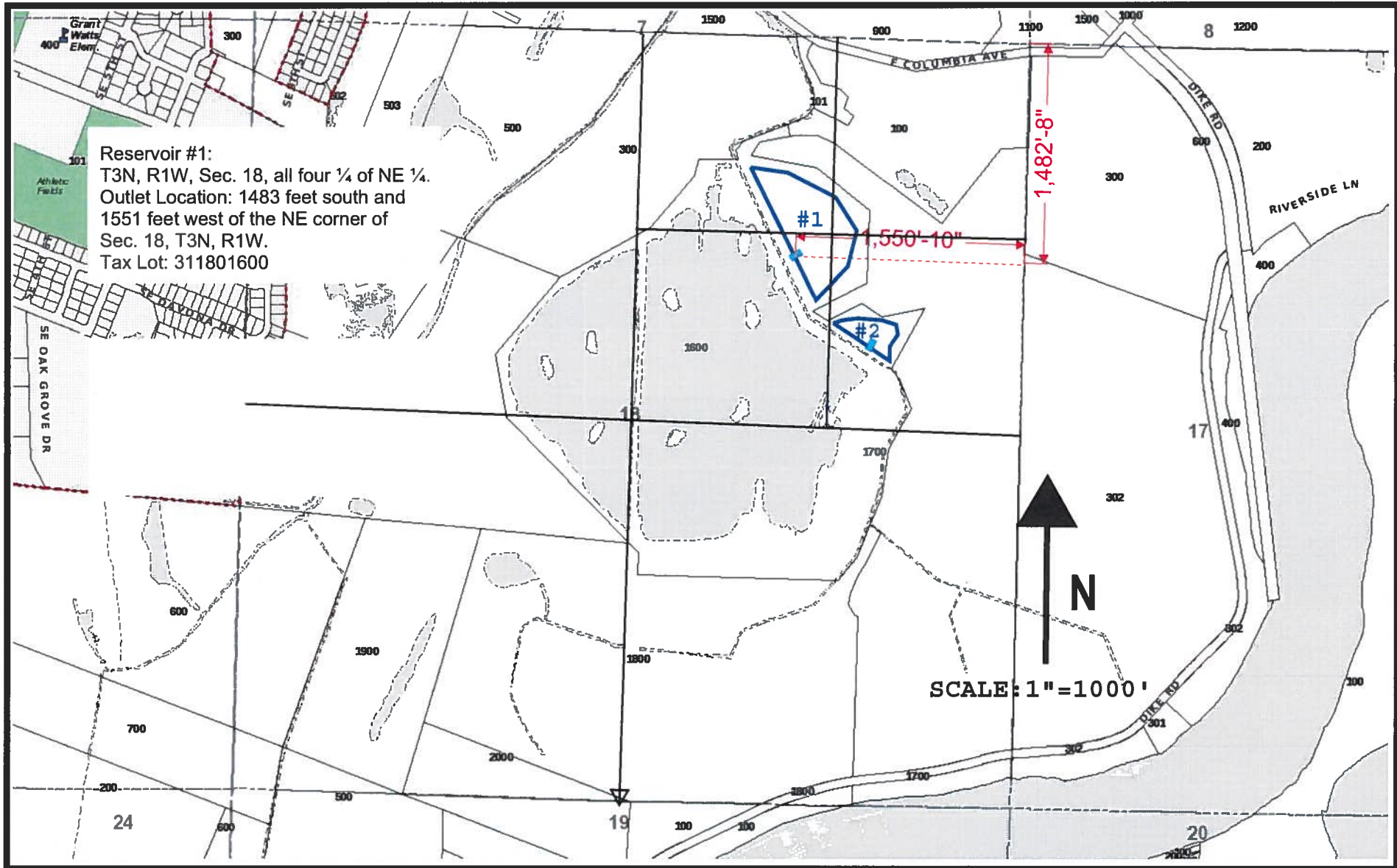


SCAPPOOSE MARSH #1



R-87903

Reservoir #1:
 T3N, R1W, Sec. 18, all four ¼ of NE ¼.
 Outlet Location: 1483 feet south and
 1551 feet west of the NE corner of
 Sec. 18, T3N, R1W.
 Tax Lot: 311801600

Columbia County



Oregon

Columbia County Web Maps

Disclaimer: This map was produced using Columbia County GIS data. The GIS data is maintained by the County to support its governmental activities and is subject to change without notice. This map should not be used for survey or engineering purposes. Columbia County assumes no responsibility with regard to the selection, performance or use of information on this map.

RECEIVED

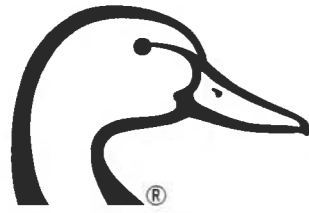
JUN 04 2013

WATER RESOURCES DEPT
 SALEM, OREGON

Printed 05/08/2013



OR-113-2 SCAPPOOSE MARSH



**DUCKS
UNLIMITED**

DUCKS UNLIMITED, INC.
PACIFIC NORTHWEST FIELD OFFICE
17800 SE MILL PLAIN BLVD. STE. 120
VANCOUVER, WA. 98683
PH. (360) 885-2011

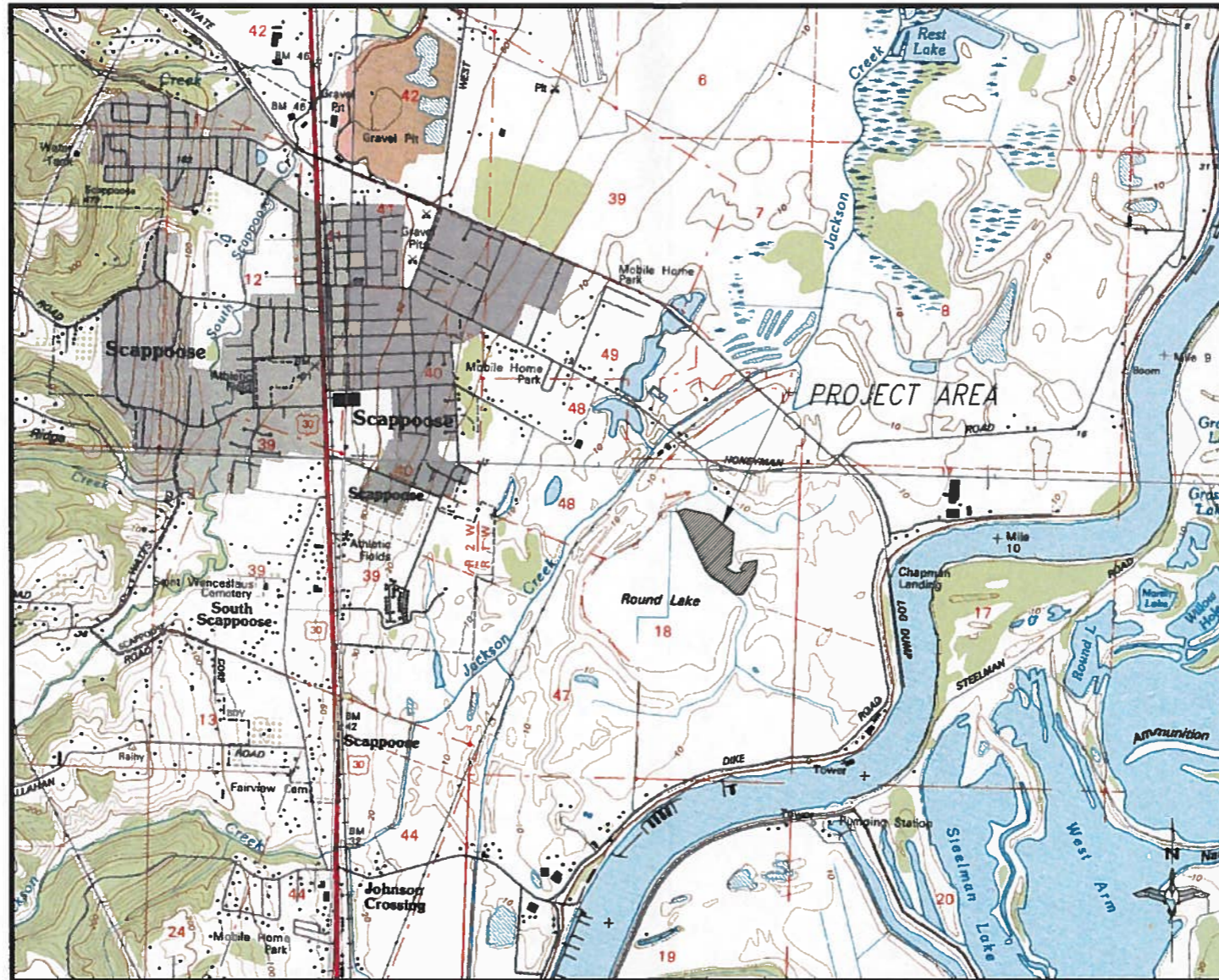
North American Wetlands Conservation Council



RECEIVED

JUN 04 2013

WATER RESOURCES I
SALEM, OREGON

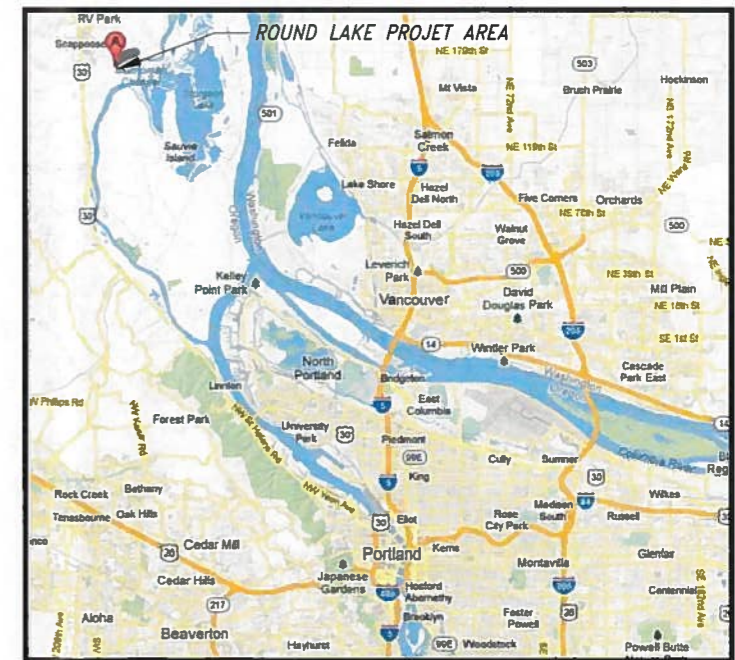


**SITE MAP
COLUMBIA COUNTY
OREGON**

SECTION: 18
TOWNSHIP: T 3 N
RANGE: R 1 W
LAT = 45° 44' 39.13" N
LONG = 122° 51' 15.8" W

SHEET INDEX

1. COVER SHEET
2. TOPO MAP
3. DETAILS



VICINITY MAP

GENERAL NOTES:

1. SHOULD THE CONTRACTOR FIND ANY DISCREPANCIES BETWEEN THE CONDITIONS EXISTING IN THE FIELD AND THE INFORMATION SHOWN ON THE DRAWINGS, HE SHALL NOTIFY THE ENGINEER BEFORE PROCEEDING WITH CONSTRUCTION.
2. SHOULD IT APPEAR THAT THE WORK TO BE DONE, OR ANY MATTER RELATIVE THERETO, IS NOT SUFFICIENTLY DETAILED OR EXPLAINED ON THESE PLANS OR IN THE SPECIFICATIONS, THE CONTRACTOR SHALL CONTACT THE PROJECT ENGINEER FOR SUCH FURTHER EXPLANATIONS AS MAY BE NECESSARY.
3. DUCKS UNLIMITED MAKES NO REPRESENTATIONS AS TO THE EXISTENCE OR NONEXISTENCE OF UTILITIES. IT IS THE RESPONSIBILITY OF THE CONTRACTOR TO COMPLY WITH THE PROVISIONS OF ORS 757.541 TO 757.571. THE CONTRACTOR IS RESPONSIBLE FOR LOCATING UTILITIES PRIOR TO THE START OF CONSTRUCTION. THE CONTRACTOR WILL BE LIABLE FOR ANY DAMAGE TO UTILITIES CAUSED BY CONSTRUCTION ACTIVITIES.
4. IN ACCORDANCE WITH GENERALLY ACCEPTED CONSTRUCTION PRACTICES THE CONTRACTOR WILL BE SOLELY AND COMPLETELY RESPONSIBLE FOR THE CONDITIONS OF THE JOB SITE INCLUDING SAFETY OF ALL PERSONS AND PROPERTY DURING PERFORMANCE OF THE WORK. EXCAVATIONS SHALL MEET THE REQUIREMENTS OF OSHA 29 CFR 1926, SUBPART P, EXCAVATIONS. THE DUTIES OF THE PROJECT ENGINEER DO NOT INCLUDE THE REVIEW OF THE ADEQUACY OF THE CONTRACTORS SAFETY IN, ON OR NEAR THE JOBSITE.
5. THE ENGINEER PREPARING THESE PLANS WILL NOT BE RESPONSIBLE FOR, UNAUTHORIZED CHANGES TO OR USES OF THESE PLANS. ALL CHANGES MUST BE IN WRITING AND MUST BE APPROVED BY THE PREPARER OF THESE PLANS.

ABBREVIATIONS

C-C	CENTER TO CENTER	N	NORTH
CMP	CORRUGATED METAL PIPE	NO	NUMBER, NORTH
DIA	DIAMETER	NTS	NOT TO SCALE
Dp	PIPE DIAMETER	OC	ON CENTER
Dr	RISER DIAMETER	PP	POWER POLE
DU	DUCKS UNLIMITED, INC.	PSI	POUNDS PER SQUARE INCH
EL, ELEV	ELEVATION	PVC	POLYVINYL CHLORIDE
EX	EXISTING	R	RIGHT
FB	FLASHBOARD	RD	ROAD
FG	FINISHED GRADE	REF	REFERENCE DIMENSION
FL	FLOW LINE	REQD	REQUIRED
FT	FOOT, FEET	SCH	SCHEDULE
FTG	FITTING	SO	SOUTH
GA	GAUGE	SP	SPECIAL
H	RISER HEIGHT	STA	STATION
ID	INSIDE DIAMETER	TE	TOP ELEVATION
IE	INVERT ELEVATION	TYP	TYPICAL
IN	INCH, INCHES	USA	UNDERGROUND SERVICE ALERT
INV	INVERT	VLV	VALVE
L	LENGTH, LEFT	WI	WIDTH
LBF	POUNDS-FORCE	W	WATER
LF	LINEAR FEET	WS	SURFACE
MAX	MAXIMUM	WWF	WELDED WIRE FABRIC
MIN	MINIMUM	WCS	WATER CONTROL STRUCTURE
MISC	MISCELLANEOUS		

UNAUTHORIZED CHANGES & USES
THE ENGINEER PREPARING THESE PLANS WILL NOT BE RESPONSIBLE FOR, OR LIABLE FOR, UNAUTHORIZED CHANGES TO OR USES OF THESE PLANS. ALL CHANGES MUST BE IN WRITING AND MUST BE APPROVED BY THE PREPARER OF THESE PLANS.

NOTE: DUCKS UNLIMITED WILL PROVIDE CONSTRUCTION STAKING AND/OR VERTICAL CONTROL FOR THE CONTRACTOR.

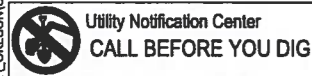
SURVEY DATUM		REVISIONS			
SURVEY DATE:	OCTOBER 05 & APRIL 2013	REV. NO.	DESCRIPTION	DATE	APPROVED
HORIZONTAL DATUM:	OREGON STATE PLANE NORTH ZONE NAD83	1			
VERTICAL DATUM:	NAVD83	2			
GEOID MODEL:	99	3			
CONTOUR INTERVAL:	1'	4			

<p>DUCKS UNLIMITED INC. PacNW Field Office (360) 885-2011</p>	PROJECT NO. OR-113-2	GENERAL INFORMATION
	SCAPPOOSE MARSH	DESIGNED BY: RVH DRAWN BY: DMC SURVEYED BY: JPS CHECKED BY:
DATE: MAY 2013	SHEET NO. 1	APPROVED BY:

PRELIMINARY

R-87903

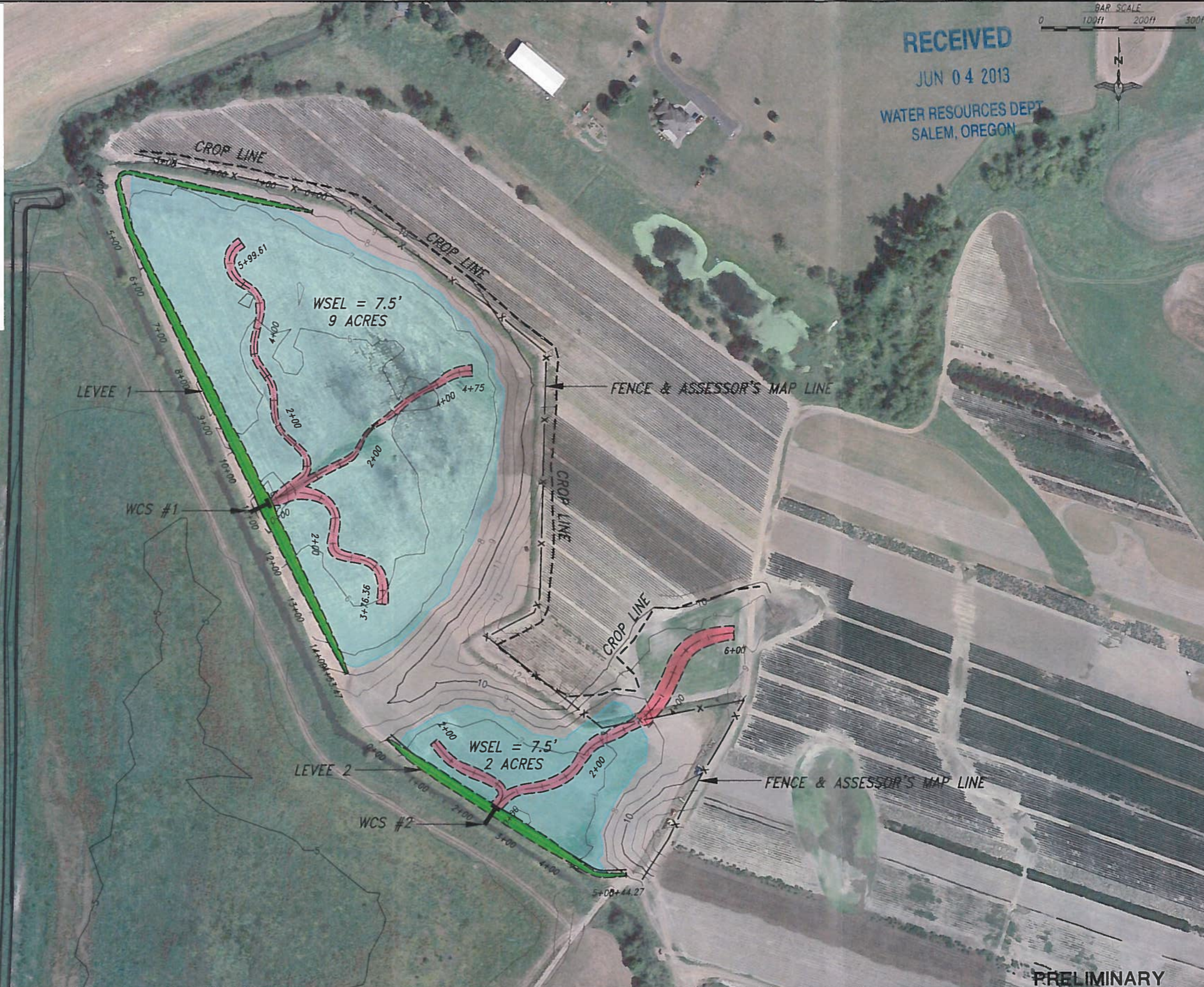
D:\OREGON\OR-113-2 ROUND LAKE\DWG\OR-113-002_001.dwg, 5/7/2013 4:15:00 PM, DMC



LEGEND

- CROP LINE
- x-x- FENCE & ACCESSOR'S MAP LINE
- WATER SURFACE ELEVATION = 7.5'
- LEVEE (ELEVATION = 8.0')
- WATER CONTROL STRUCTURES (WCS)
- SWALES

RECEIVED
 JUN 04 2013
 WATER RESOURCES DEPT
 SALEM, OREGON

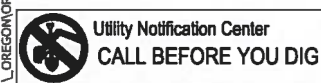


PRELIMINARY

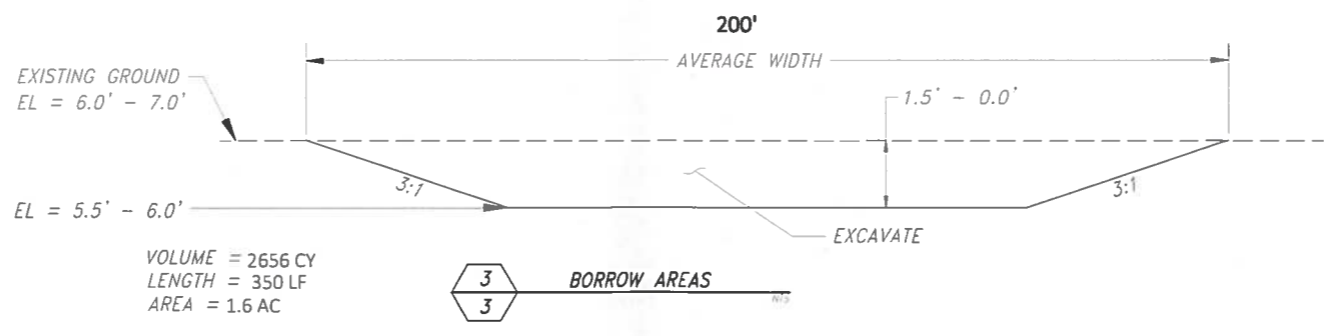
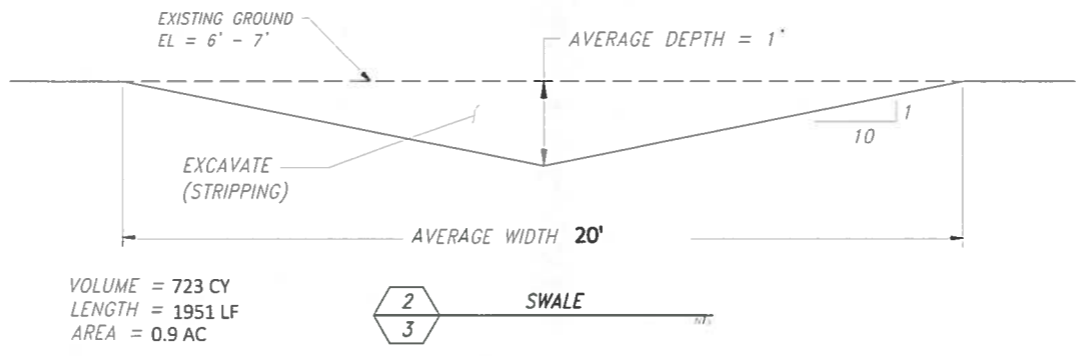
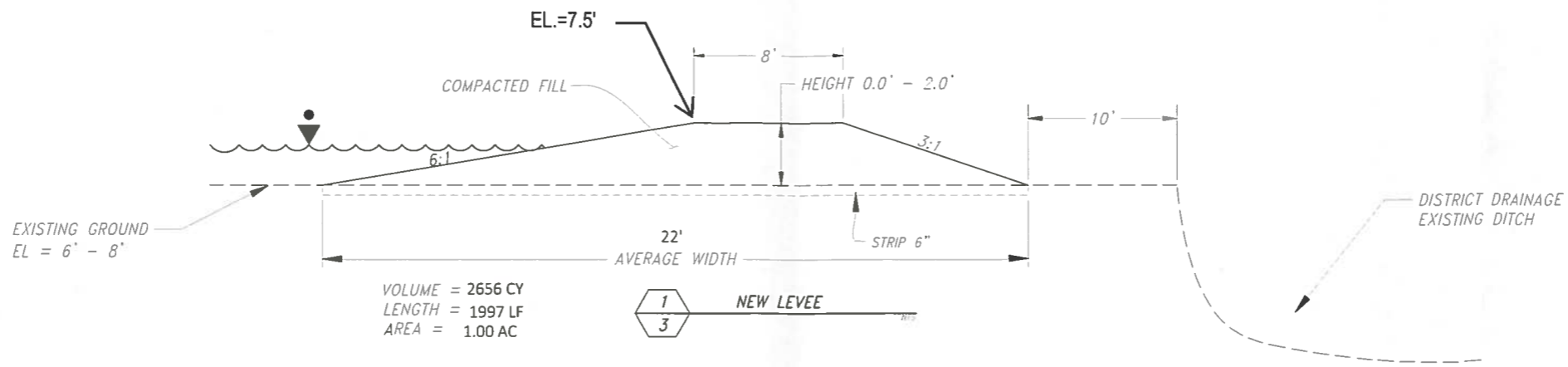
SURVEY DATUM		REVISIONS			
SURVEY DATE:	OCTOBER 2005 & APRIL 2013	REV. NO.	DESCRIPTION	DATE	APPROVED
HORIZONTAL DATUM:	OREGON STATE PLANE NORTH ZONE NAD83	1			
VERTICAL DATUM:	NAVD88	2			
GEOID MODEL:	99	3			
CONTOUR INTERVAL:	1	4			
AERIAL PHOTO:	8-15-2012	5			

DUCKS UNLIMITED INC.
 PacNW Field Office
 (360) 885-2011
 DATE: MAY 2013

PROJECT NO. OR-113-2	GENERAL INFORMATION
SCAPPOOSE MARSH	DESIGNED BY: RVH
	DRAWN BY: DMC
	SURVEYED BY: JPS
	CHECKED BY:
SHEET NO. 2	APPROVED BY:

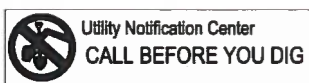


R-87903



RECEIVED
JUN 04 2013
WATER RESOURCES DEPT
SALEM, OREGON

PRELIMINARY



SURVEY DATUM		REVISIONS			
SURVEY DATE:	OCTOBER 05 & APRIL 2013	REV. NO.	DESCRIPTION	DATE	APPROVED
HORIZONTAL DATUM:	OREGON STATE PLANE NORTH ZONE NAD83	1			
VERTICAL DATUM:	NAVD88	2			
GEOID MODEL:	99	3			
CONTOUR INTERVAL:	1'	4			

DUCKS UNLIMITED INC.
PacNW Field Office
(360) 885-2011
DATE: MAY 2013

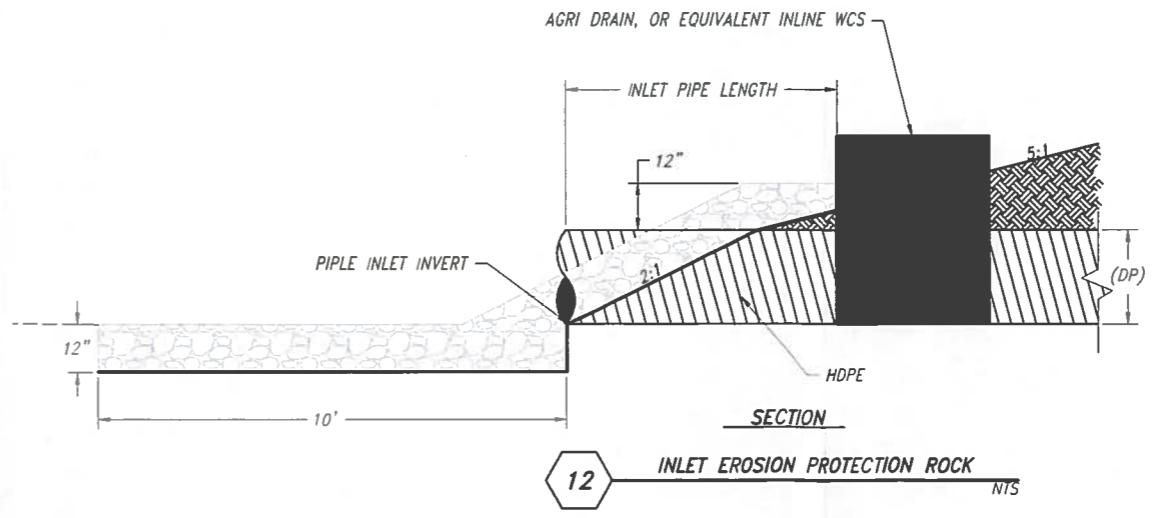
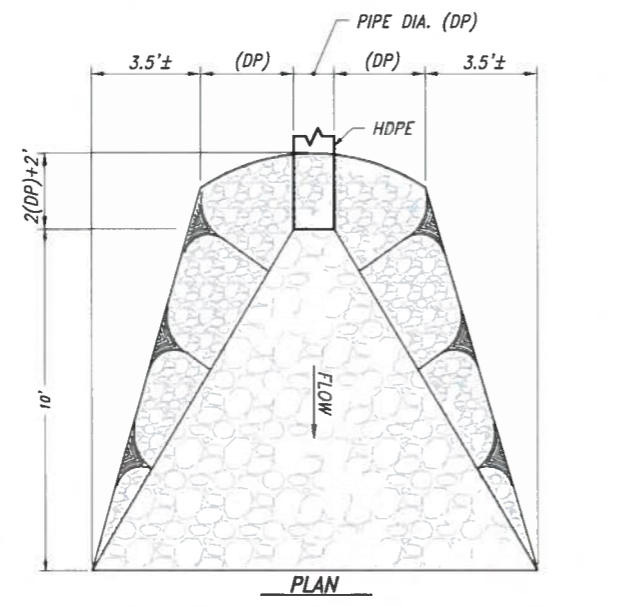
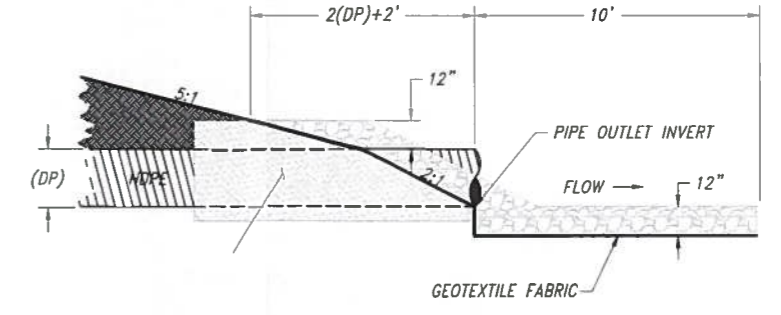
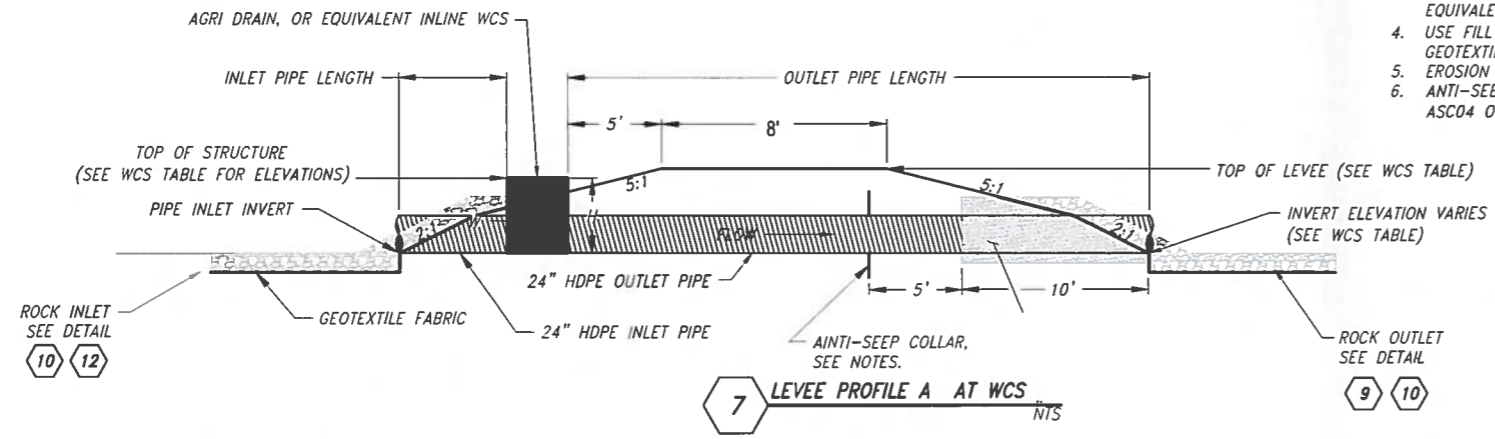
PROJECT NO. OR-113-2	GENERAL INFORMATION
SCAPPOOSE MARSH	DESIGNED BY: RVH
	DRAWN BY: DMC
	SURVEYED BY: JPS
	CHECKED BY:
SHEET NO. 3	APPROVED BY:

R-87903

D:\OREGON\OR-113-2 ROUND LAKE\dwg\OR-113-02_003.dwg, 5/7/2013 4:15:16 PM, DMC

WATER CONTROL STRUCTURE TABLE										
No.	H HEIGHT (FT)	TOP ELEV. (FT)	DESIGN WSEL (FT)	INLET ELEV. (FT)	OUTLET ELEV. (FT)	DIA. PIPE (IN)	PIPE TYPE	PIPE LENGTH (FT)	INLET LENGTH (FT)	OUTLET LENGTH (FT)
1	3	8.0	7.5	5.0	4.0	24	HDPE	40.0	5	35
2	3	8.0	7.5	5.0	4.0	24	HDPE	40.0	5	35

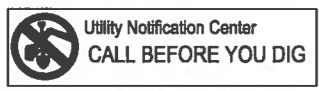
- NOTES:**
1. DRILL 1/2" DIA. HOLES IN EACH CORRUGATION TO PREVENT BUOYANCY.
 2. AGRI DRAIN 24" RAT GUARD OR EQUIVALENT TO BE INSTALLED AT INLET AND OUTLET.
 3. GEOTEXTILE FABRIC SHALL BE MIRAFI FW 300 OR EQUIVALENT.
 4. USE FILL MATERIAL IN 6" X 6" SPACE FOR GEOTEXTILE STABILIZATION.
 5. EROSION CONTROL ROCK SHALL BE CLASS 100.
 6. ANTI-SEEP COLLAR SHALL BE AGRIDRAIN™ ITEM# ASC04 OR EQUIVALENT.



RECEIVED
JUN 04 2013
WATER RESOURCES DEPT
SALEM, OREGON

PRELIMINARY

SURVEY DATUM		REVISIONS				 Ducks Unlimited Inc. PacNW Field Office (560) 885-2011 DATE: MAY 2013	PROJECT NO. OR-113-2	SCAPPOOSE MARSH	GENERAL INFORMATION
SURVEY DATE:	DESCRIPTION	REV. NO.	DATE	APPROVED					
OCTOBER 05 & APRIL 2013		1						DESIGNED BY: RVH	
OREGON STATE PLANE NORTH ZONE NAD83		2						DRAWN BY: DMC	
NAVDB8		3						SURVEYED BY: JPS	
99		4						CHECKED BY:	
1'									



D:_OREGON\OR-113-2 ROUND LAKE\dwg\OR-113-002_003.dwg, 5/7/2013 4:15:16 PM, DMC

12-87803