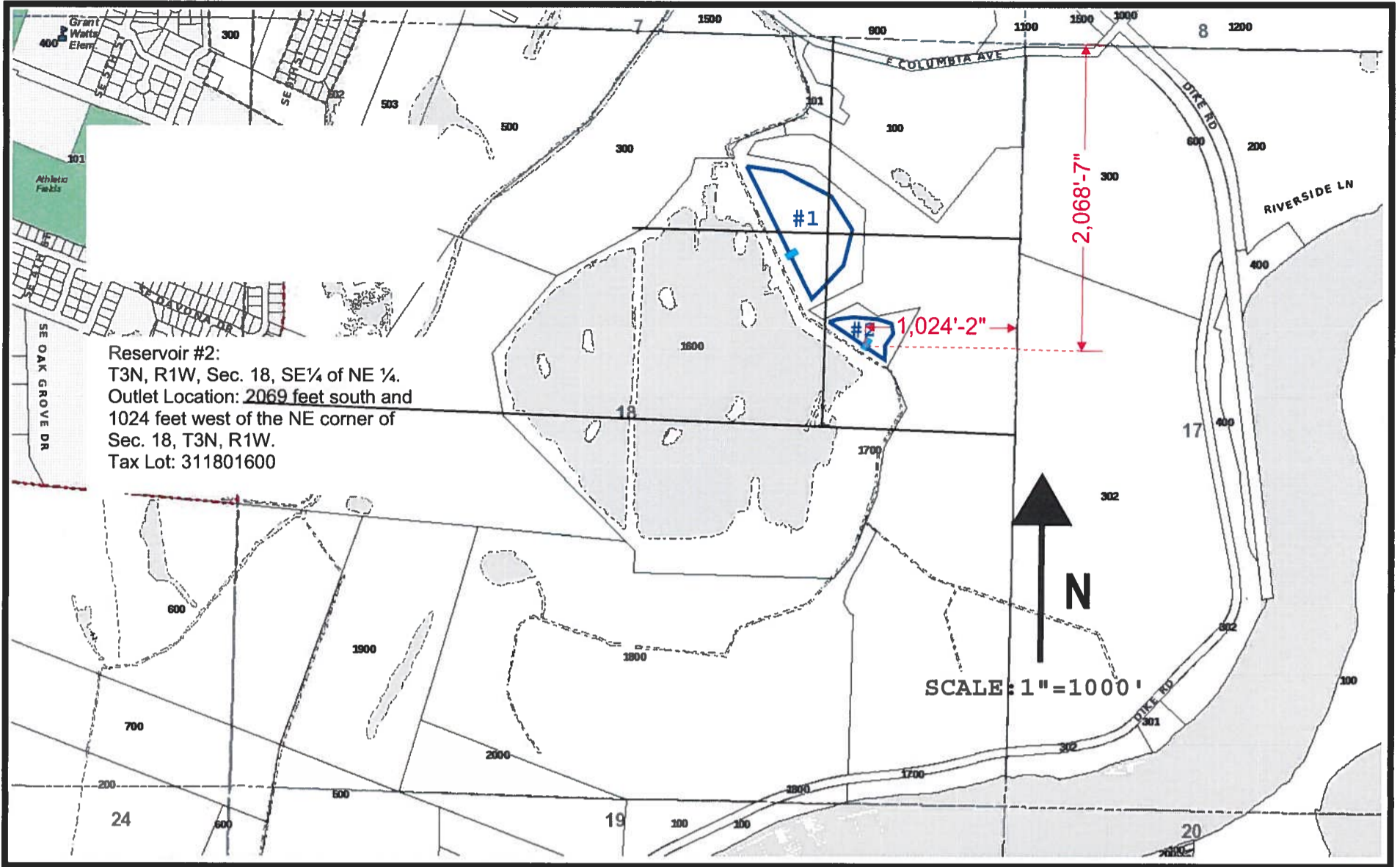


# SCAPPOOSE MARSH #2



Columbia County



## Columbia County Web Maps

Disclaimer: This map was produced using Columbia County GIS data. The GIS data is maintained by the County to support its governmental activities and is subject to change without notice. This map should not be used for survey or engineering purposes. Columbia County assumes no responsibility with regard to the selection, performance or use of information on this map.

RECEIVED

JUN 04 2013

WATER RESOURCES DEPT  
 SALEM, OREGON

Printed 05/08/2013

GeoInfo



# DUCKS UNLIMITED

DUCKS UNLIMITED, INC.  
PACIFIC NORTHWEST FIELD OFFICE  
17800 SE MILL PLAIN BLVD. STE. 120  
VANCOUVER, WA, 98683  
PH. (360) 885-2011

### GENERAL NOTES:

1. SHOULD THE CONTRACTOR FIND ANY DISCREPANCIES BETWEEN THE CONDITIONS EXISTING IN THE FIELD AND THE INFORMATION SHOWN ON THE DRAWINGS, HE SHALL NOTIFY THE ENGINEER BEFORE PROCEEDING WITH CONSTRUCTION.
2. SHOULD IT APPEAR THAT THE WORK TO BE DONE, OR ANY MATTER RELATIVE THERETO, IS NOT SUFFICIENTLY DETAILED OR EXPLAINED ON THESE PLANS OR IN THE SPECIFICATIONS, THE CONTRACTOR SHALL CONTACT THE PROJECT ENGINEER FOR SUCH FURTHER EXPLANATIONS AS MAY BE NECESSARY.
3. DUCKS UNLIMITED MAKES NO REPRESENTATIONS AS TO THE EXISTENCE OR NONEXISTENCE OF UTILITIES. IT IS THE RESPONSIBILITY OF THE CONTRACTOR TO COMPLY WITH THE PROVISIONS OF ORS 757.541 TO 757.571. THE CONTRACTOR IS RESPONSIBLE FOR LOCATING UTILITIES PRIOR TO THE START OF CONSTRUCTION. THE CONTRACTOR WILL BE LIABLE FOR ANY DAMAGE TO UTILITIES CAUSED BY CONSTRUCTION ACTIVITIES.
4. IN ACCORDANCE WITH GENERALLY ACCEPTED CONSTRUCTION PRACTICES THE CONTRACTOR WILL BE SOLELY AND COMPLETELY RESPONSIBLE FOR THE CONDITIONS OF THE JOB SITE INCLUDING SAFETY OF ALL PERSONS AND PROPERTY DURING PERFORMANCE OF THE WORK. EXCAVATIONS SHALL MEET THE REQUIREMENTS OF OSHA 29 CFR 1926. SUBPART P, EXCAVATIONS. THE DUTIES OF THE PROJECT ENGINEER DO NOT INCLUDE THE REVIEW OF THE ADEQUACY OF THE CONTRACTORS SAFETY IN, ON OR NEAR THE JOBSITE.
5. THE ENGINEER PREPARING THESE PLANS WILL NOT BE RESPONSIBLE FOR UNAUTHORIZED CHANGES TO OR USES OF THESE PLANS. ALL CHANGES MUST BE IN WRITING AND MUST BE APPROVED BY THE PREPARER OF THESE PLANS.

### ABBREVIATIONS

C-C	CENTER TO CENTER	N	NORTH
CMP	CORRUGATED METAL PIPE	NO	NUMBER, NORTH
DIA	DIAMETER	N/S	NOT TO SCALE
Dp	PIPE DIAMETER	OC	ON CENTER
Dr	RISER DIAMETER	PP	POWER POLE
DU	DUCKS UNLIMITED, INC.	PSI	POUNDS PER SQUARE INCH
EL, ELEV	ELEVATION	PVC	POLYVINYL CHLORIDE
EX	EXISTING	R	RIGHT
FB	FLASHBOARD	RD	ROAD
FG	FINISHED GRADE	REF	REFERENCE DIMENSION
FL	FLOW LINE	RECO	REQUIRED
FT	FOOT, FEET	SCH	SCHEDULE
FTG	FITTING	SO	SOUTH
GA	GAUGE	SP	SPECIAL
H	RISER HEIGHT	STA	STATION
ID	INSIDE DIAMETER	TE	TOP ELEVATION
IE	INVERT ELEVATION	TYP	TYPICAL
IN	INCH, INCHES	USA	UNDERGROUND SERVICE ALERT
INV	INVERT	VALV	VALVE
L	LENGTH, LEFT	W	WIDTH
LBF	POUNDS-FORCE	W	WATER
LF	LINEAR FEET	WS	SURFACE
MAX	MAXIMUM	WVF	WELDED WIRE FABRIC
MIN	MINIMUM	WCS	WATER CONTROL STRUCTURE
MISC	MISCELLANEOUS		



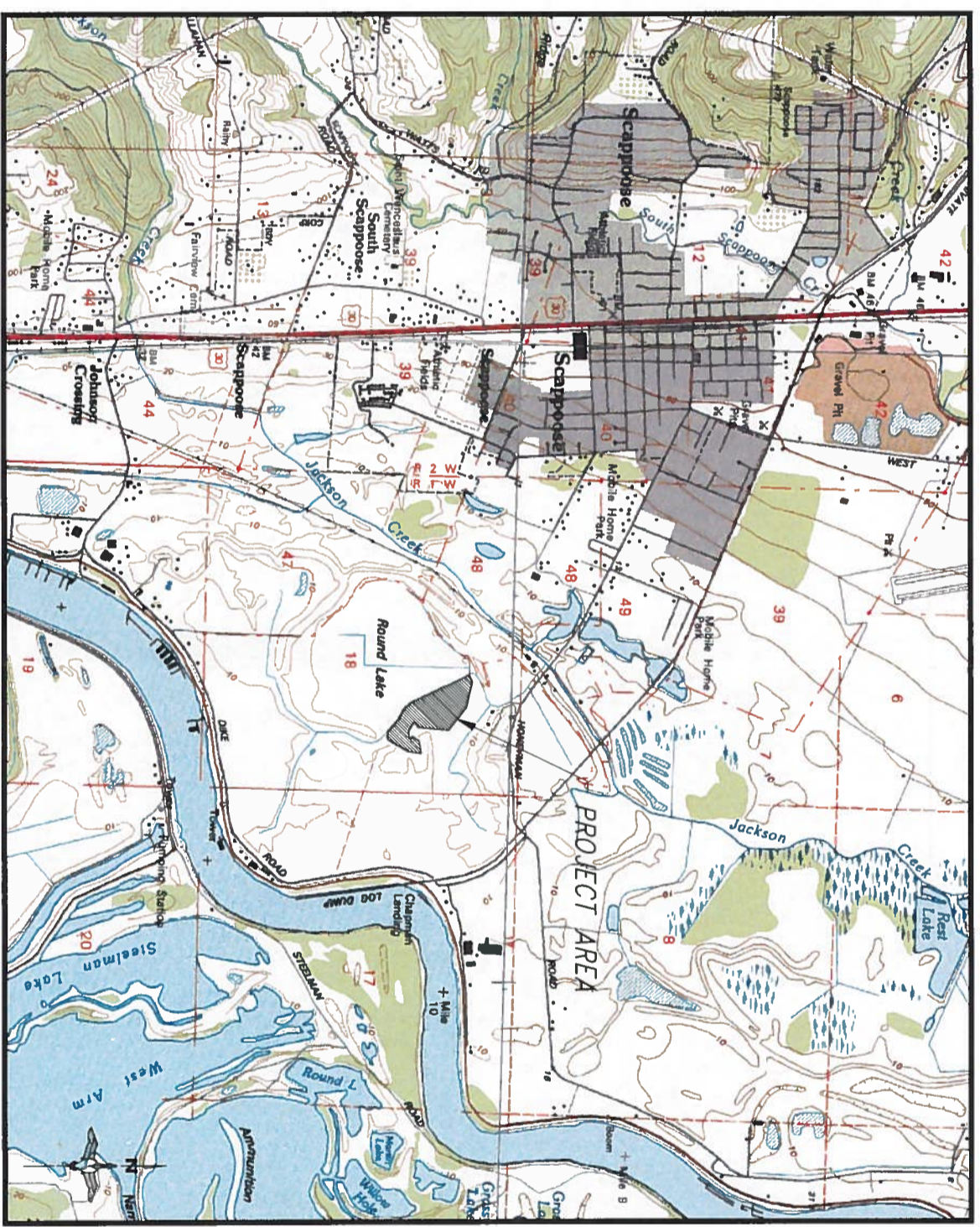
UTILITY NOTIFICATION CENTER  
CALL BEFORE YOU DIG

UNAUTHORIZED CHANGES & USES  
THE ENGINEER PREPARING THESE PLANS WILL NOT BE RESPONSIBLE FOR UNAUTHORIZED CHANGES TO OR USES OF THESE PLANS. ALL CHANGES MUST BE IN WRITING AND MUST BE APPROVED BY THE PREPARER OF THESE PLANS.

SURVEY DATUM	
SURVEY DATE:	OCTOBER 05 & APRIL 2013
HORIZONTAL DATUM:	OREGON STATE PLANE NORTH ZONE NAD83
VERTICAL DATUM:	NAVD88
GEOD. MODEL:	99
CONTOUR INTERVAL:	1'

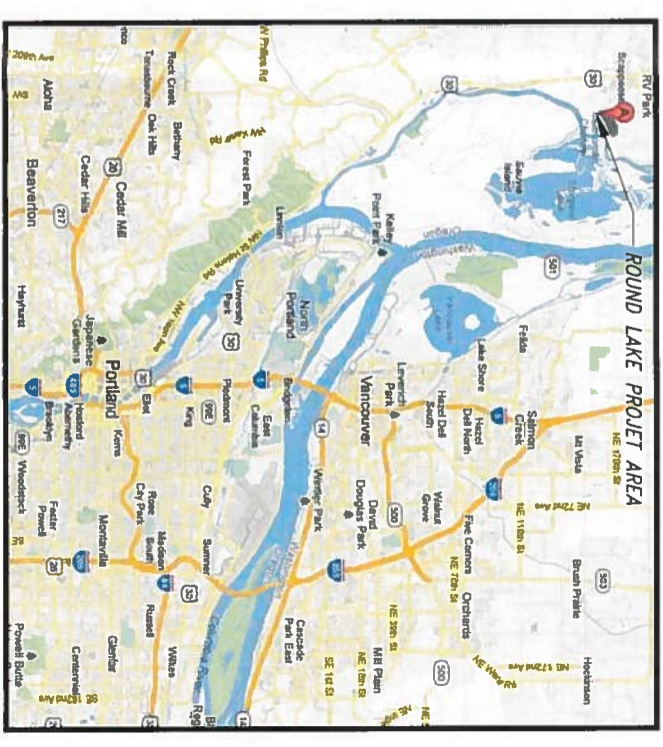
REVISIONS	
REV. NO.	DESCRIPTION

GENERAL INFORMATION	
PROJECT NO. OR-113-2	DESIGNED BY: R/H
SCAPPOOSE MARSH	DRAWN BY: DUC
	SURVEYED BY: J/S
	CHECKED BY:
DATE: MAY 2013	SHEET NO. 1
	APPROVED BY:



SITE MAP  
COLUMBIA COUNTY  
OREGON

- SHEET INDEX
1. COVER SHEET
  2. TOPO MAP
  3. DETAILS



# OR-113-2 SCAPPOOSE MARSH

North American Wetlands Conservation Council









RECEIVED  
JUN 04 2013  
WATER RESOURCES DE  
SALEM, OREGON



R87904

**LEGEND**

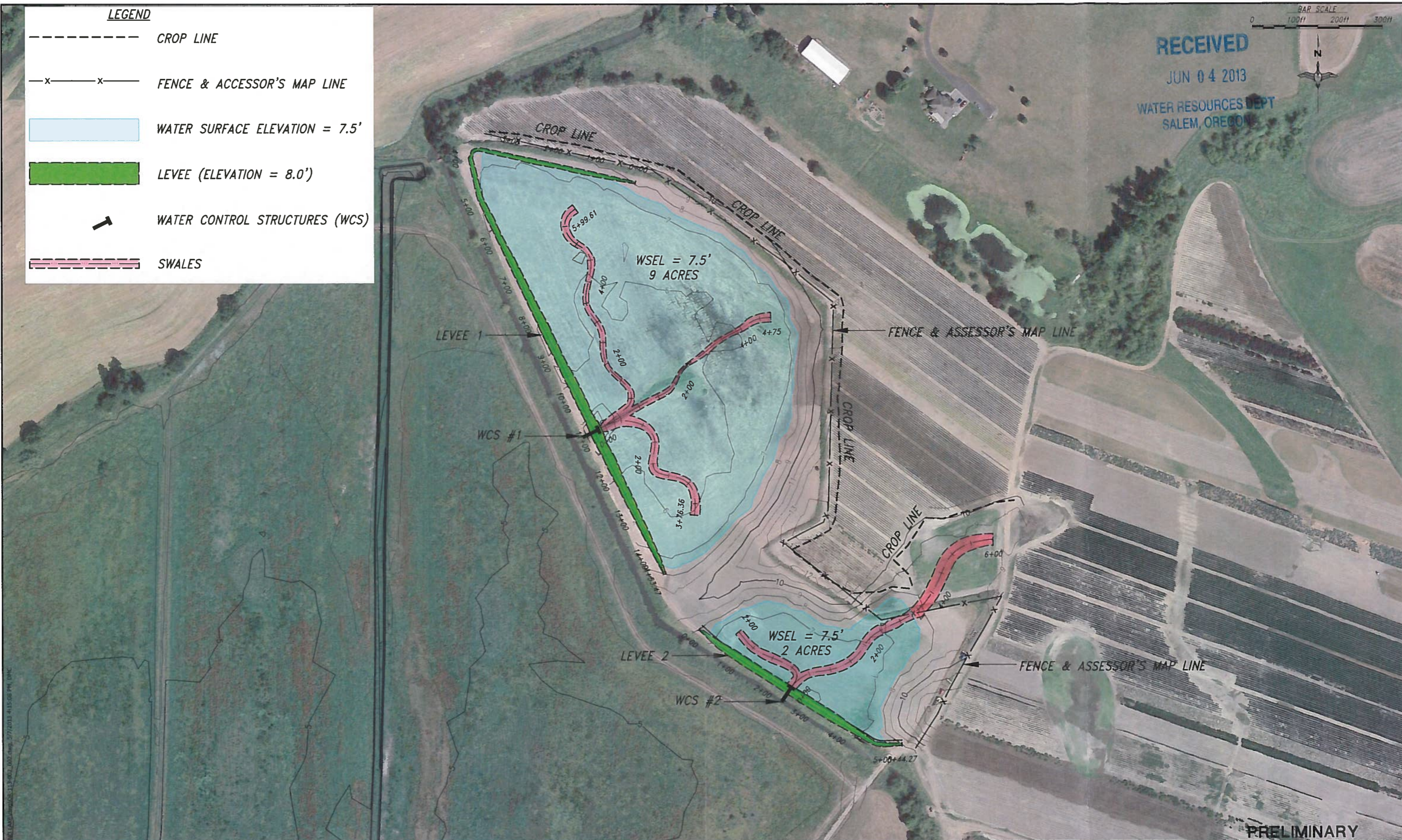
-  CROP LINE
-  FENCE & ACCESSOR'S MAP LINE
-  WATER SURFACE ELEVATION = 7.5'
-  LEVEE (ELEVATION = 8.0')
-  WATER CONTROL STRUCTURES (WCS)
-  SWALES



**RECEIVED**

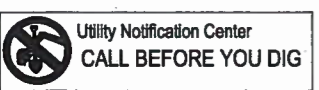
JUN 04 2013

WATER RESOURCES DEPT  
SALEM, OREGON




**PRELIMINARY**

D:\OREGON\OR-113-2\RC\113-002\113-002.dwg, 5/7/2013 4:15:08 PM, DMC



SURVEY DATUM		REVISIONS			
SURVEY DATE:	OCTOBER 2005 & APRIL 2013	REV. NO.	DESCRIPTION	DATE	APPROVED
HORIZONTAL DATUM:	OREGON STATE PLANE NORTH ZONE NAD83	1			
VERTICAL DATUM:	NAVD88	2			
GEOID MODEL:	99	3			
CONTOUR INTERVAL:	1	4			
AERIAL PHOTO:	8-15-2012	5			



**DUCKS UNLIMITED INC.**  
PacNW Field Office  
(360) 885-2011

PROJECT NO. OR-113-2

**SCAPPOOSE MARSH**

DATE: MAY 2013

SHEET NO. 2

APPROVED BY:

GENERAL INFORMATION

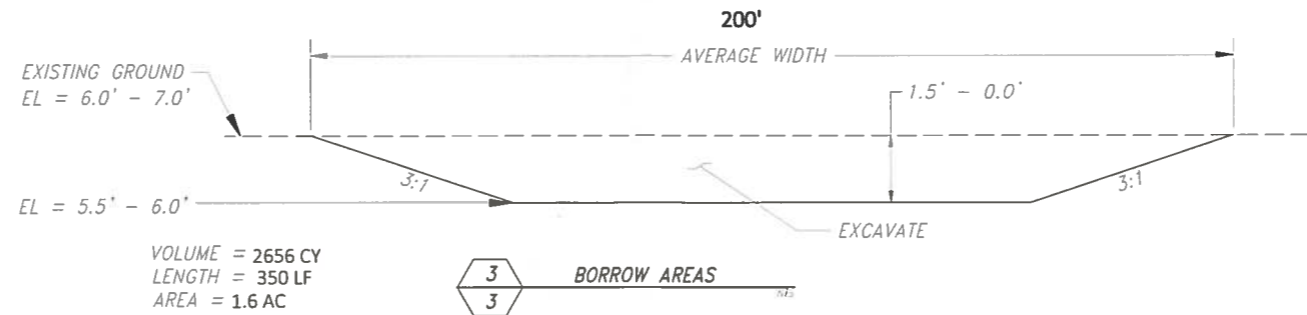
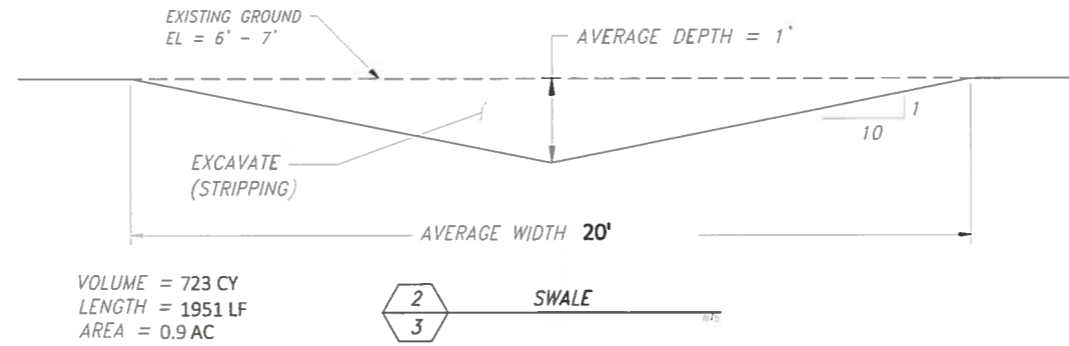
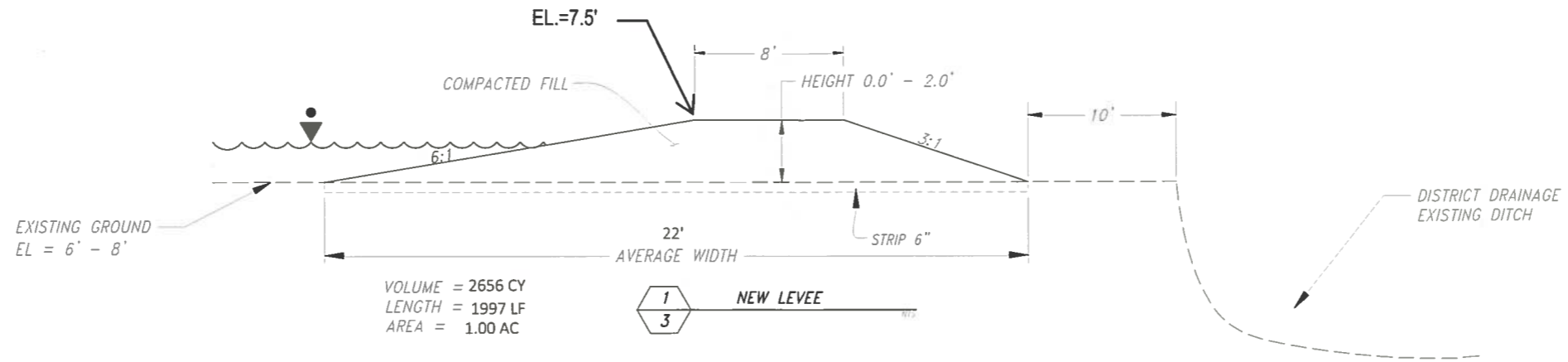
DESIGNED BY: RVH

DRAWN BY: DMC

SURVEYED BY: JPS

CHECKED BY:

*R-87904*

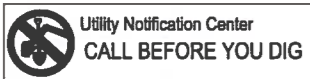


RECEIVED

JUN 04 2013

WATER RESOURCES DEPT  
SALEM, OREGON

PRELIMINARY



SURVEY DATUM		REVISIONS			DATE	APPROVED	 Ducks UNLIMITED INC. PacNW Field Office (360) 885-2011	PROJECT NO. OR-113-2	SCAPOOSE MARSH	GENERAL INFORMATION	
SURVEY DATE:	DESCRIPTION	REV. NO.	DATE	DESIGNED BY:						CHECKED BY:	
OCTOBER 05 & APRIL 2013		1							RVH		
OREGON STATE PLANE NORTH ZONE NAD83		2							DMC		
NAVDBB		3							JPS		
99		4									
1'		5									

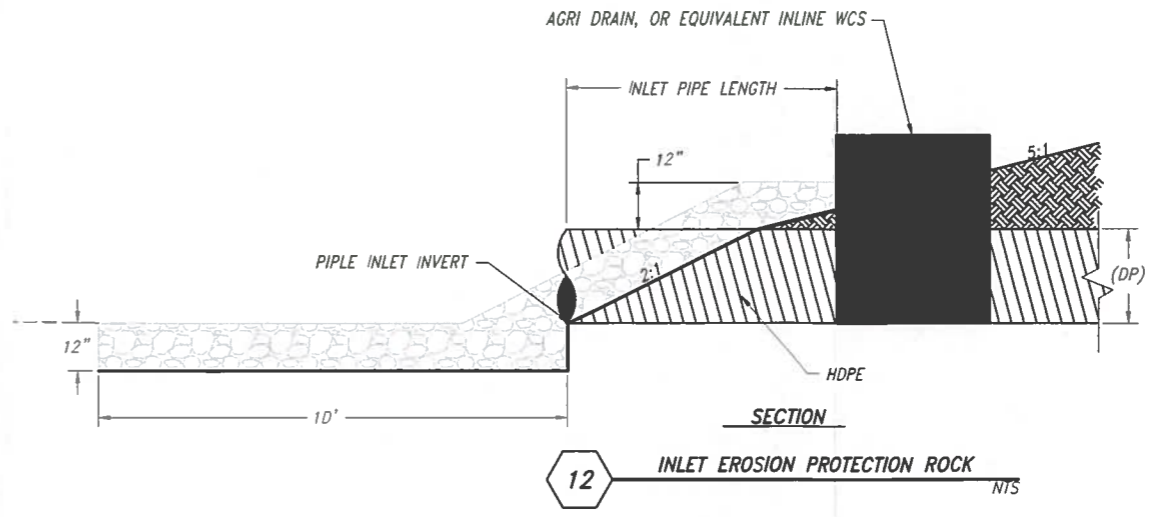
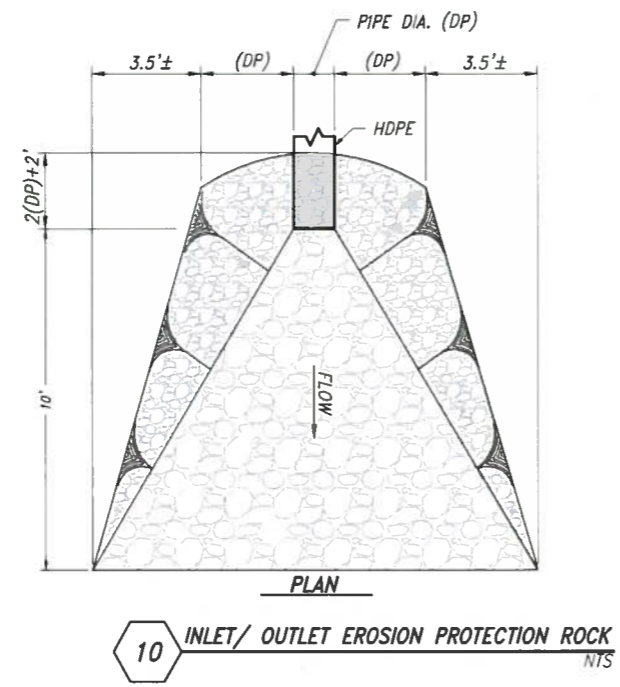
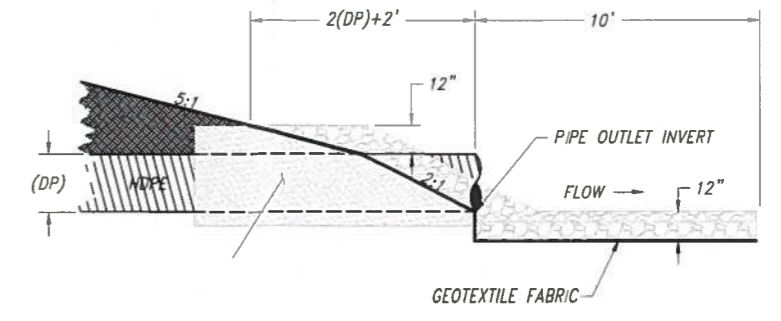
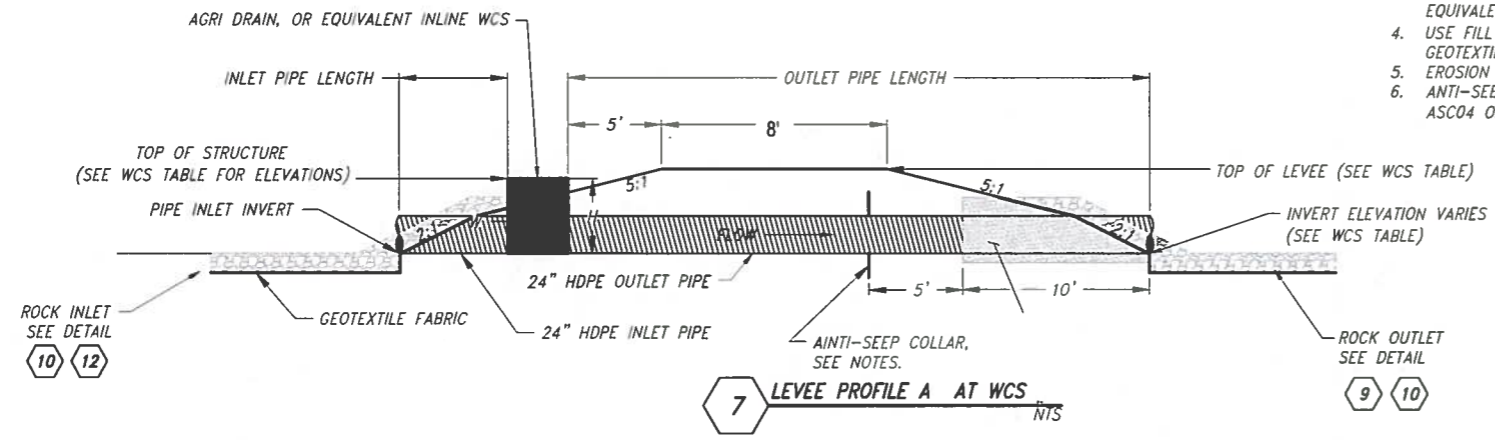
DATE: MAY 2013 SHEET NO. 3

APPROVED BY:

R-2704

WATER CONTROL STRUCTURE TABLE										
No.	H HEIGHT (FT)	TOP ELEV. (FT)	DESIGN WSEL (FT)	INLET ELEV. (FT)	OUTLET ELEV. (FT)	DIA. PIPE (IN)	TYPE	PIPE LENGTH (FT)	INLET LENGTH (FT)	OUTLET LENGTH (FT)
1	3	8.0	7.5	5.0	4.0	24	HDPE	40.0	5	35
2	3	8.0	7.5	5.0	4.0	24	HDPE	40.0	5	35

- NOTES:
1. DRILL  $\frac{1}{2}$ " DIA. HOLES IN EACH CORRUGATION TO PREVENT BUOYANCY.
  2. AGRI DRAIN 24" RAT GUARD OR EQUIVALENT TO BE INSTALLED AT INLET AND OUTLET.
  3. GEOTEXTILE FABRIC SHALL BE MIRAFI FW 300 OR EQUIVALENT.
  4. USE FILL MATERIAL IN 6" X 6" SPACE FOR GEOTEXTILE STABILIZATION
  5. EROSION CONTROL ROCK SHALL BE CLASS 100.
  6. ANTI-SEEP COLLAR SHALL BE AGRIDRAIN™ ITEM# ASC04 OR EQUIVALENT.



**RECEIVED**  
JUN 04 2013  
WATER RESOURCES DEPT  
SALEM, OREGON

PRELIMINARY

SURVEY DATUM		REVISIONS			DATE APPROVED		PROJECT NO. OR-113-2		GENERAL INFORMATION	
SURVEY DATE:	OCTOBER 05 & APRIL 2013	REV. NO.	DESCRIPTION	DATE	APPROVED	DUCKS UNLIMITED INC.		SCAPOOSE MARSH		DESIGNED BY: RVH
HORIZONTAL DATUM:	OREGON STATE PLANE NORTH ZONE NAD83	1				PacNW Field Office (360) 885-2011				DRAWN BY: DMG
VERTICAL DATUM:	NAVD88	2				DATE: MAY 2013				SURVEYED BY: JPS
GEOID MODEL:	99	3				SHEET NO. 4				CHECKED BY:
CONTOUR INTERVAL:	1'	4				APPROVED BY:				

R-87904

D:\\_OREGON\OR-113-2 ROUND LAKE\dwg\OR-113-02\_003.dwg, 5/17/2013 4:15:16 PM, DMC

