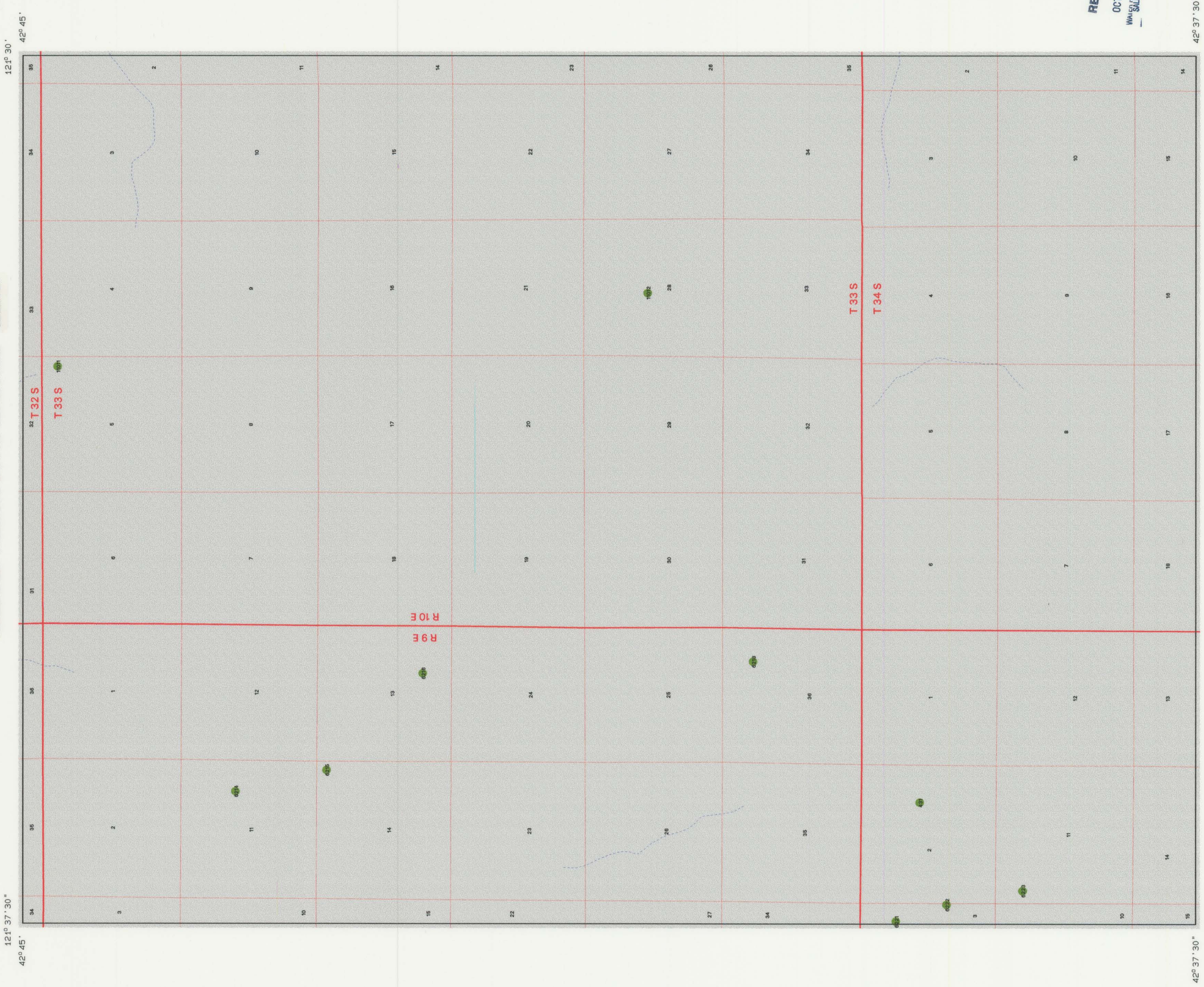


AMENDED CALIMUS BUTTE CLAIM MAP
AMENDED CLAIM #624

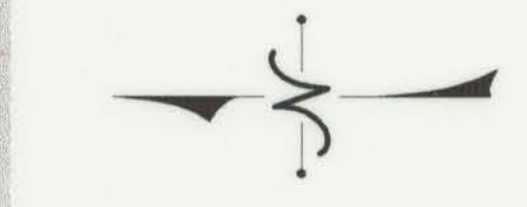


121° 37' 30" 42° 45'

121° 30' 42° 45'

121° 37' 30" 42° 37' 30"

121° 30' 42° 37' 30"



Scale = 1:24 000



To convert feet to meters multiply by .3048
To convert meters to feet multiply by 3.2808

SOURCE: USGS 7.5 MINUTE QUAD

LEGEND

- Major River
- Minor stream/Tributary
- Lake, Pond or Marsh Boundary
- U.S. Highway
- Treaty boundary
- Major Road
- County Road
- State Highway
- Seep-Spring Site
- Flow Gage
- NF Arterial Road

RECEIVED
OCT 01 1999
WATER WORKS DEPT.
SALEM, OREGON

KLAMATH ADJUDICATION
CLAIM # 624 PAGE # 122