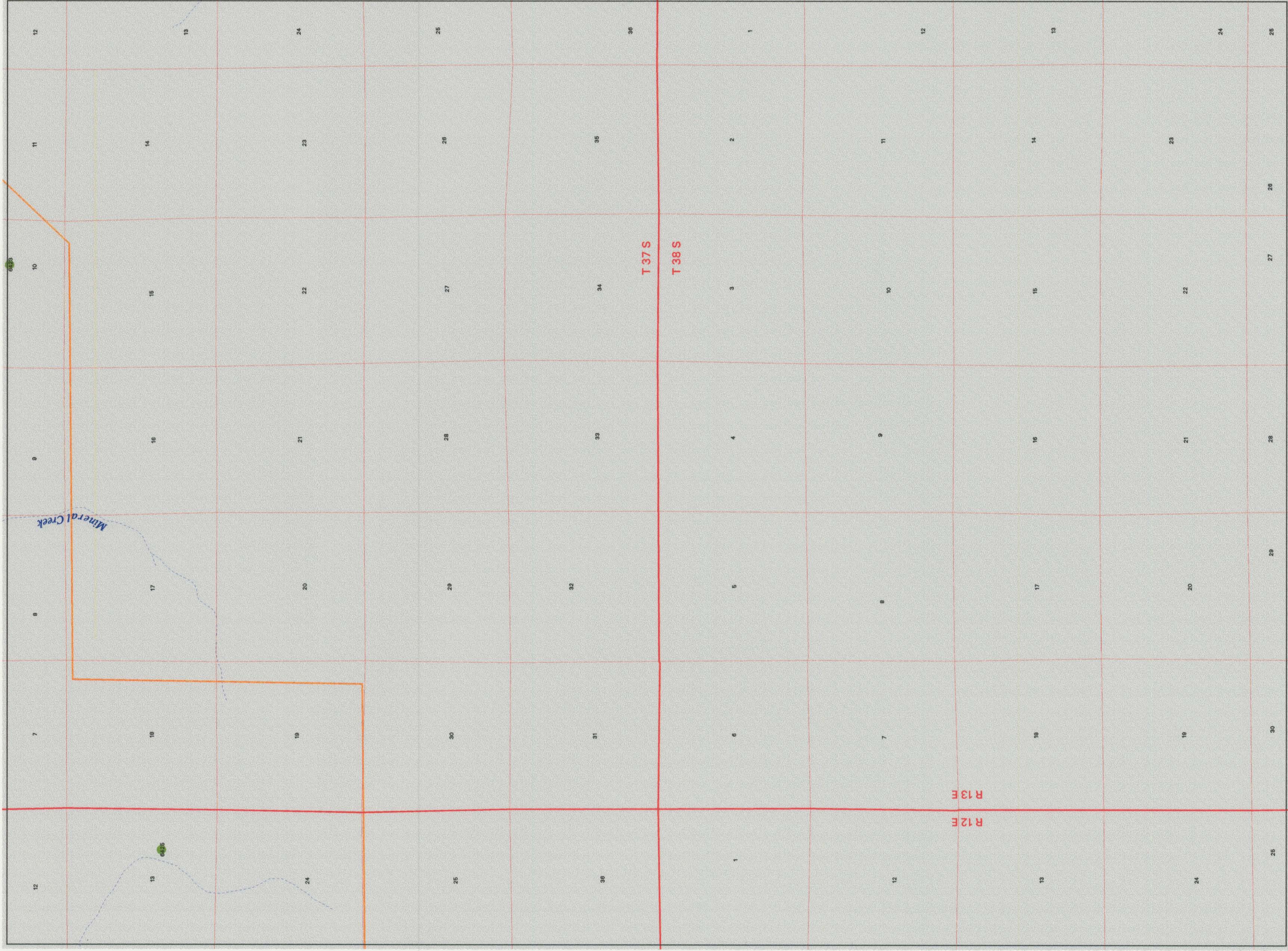


AMENDED DRY PRAIRIE CLAIM MAP

AMENDED CLAIM #624

121° 15' 42" 22' 30"

121° 07' 30" 42° 22' 30"



121° 15' 42" 15'

121° 07' 30" 42° 15'



Scale = 1:24 000



The printed data is not to scale. To convert meters to feet multiply by 3.2808

SOURCE: USGS 7.5 MINUTE QUAD

LEGEND

- Major River
- Minor stream/Tributary
- Lake, Pond or Marsh Boundary
- U.S. Highway
- Treaty boundary
- Major Road
- County Road
- State Highway
- Flow Gage
- Seep-Spring Site
- NF Arterial Road

RECEIVED
OCT 01 1999
WAIVER DIVISION
SALEM, OREGON

KLAMATH ADJUDICATION
CLAIM # 624 PAGE # 125