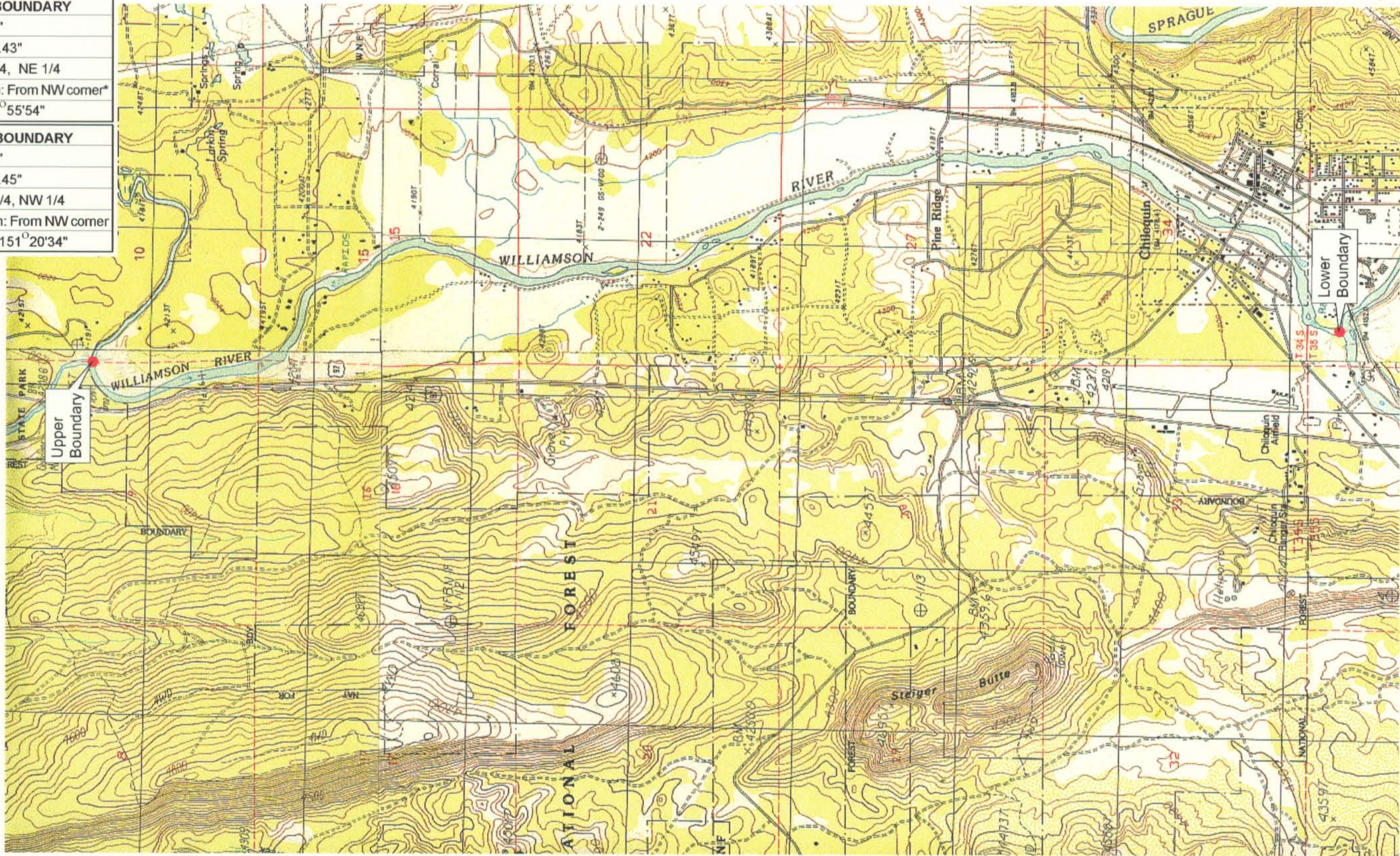


<b>UPPER REACH BOUNDARY</b>
Latitude: 42° 38' 27.81"
Longitude: 121° 52' 33.43"
T 34S, R 7E, S 9, SE 1/4, NE 1/4
Distance/Bearing/Azimuth: From NW corner*
S 88° 4'6" E, 590.6m, 91° 55'54"
<b>LOWER REACH BOUNDARY</b>
Latitude: 42° 34' 19.50"
Longitude: 121° 52' 20.45"
T 35S, R 7E, S 3, NW 1/4, NW 1/4
Distance/Bearing/Azimuth: From NW corner
S 28° 39'26" E, 303.8m, 151° 20'34"

\* See plate 1 of 1 of Williamson River #4



RECEIVED

MAR 01 1999

WATER RESOURCES DEPT.  
SALEM, OREGON



Source: USGS 7.5 Minute  
Quad: Ft. Klamath, Solomon  
Butte, Chiloquin, Agency Lake.

Vertical Datum: National  
Geodetic Vertical Datum of  
1929.  
Horizontal Datum: 1927 North  
American Datum.

**KLAMATH ADJUDICATION**  
**CLAIM #627 PAGE # 04**

Reach boundaries: Spring Creek to Sprague River.  
Plate 1 of 1.

**Klamath Basin Water Rights Claim Map**  
Department of the Interior Bureau of Indian Affairs  
Reach Name: **Williamson River #3**  
Scale: 1:24,000