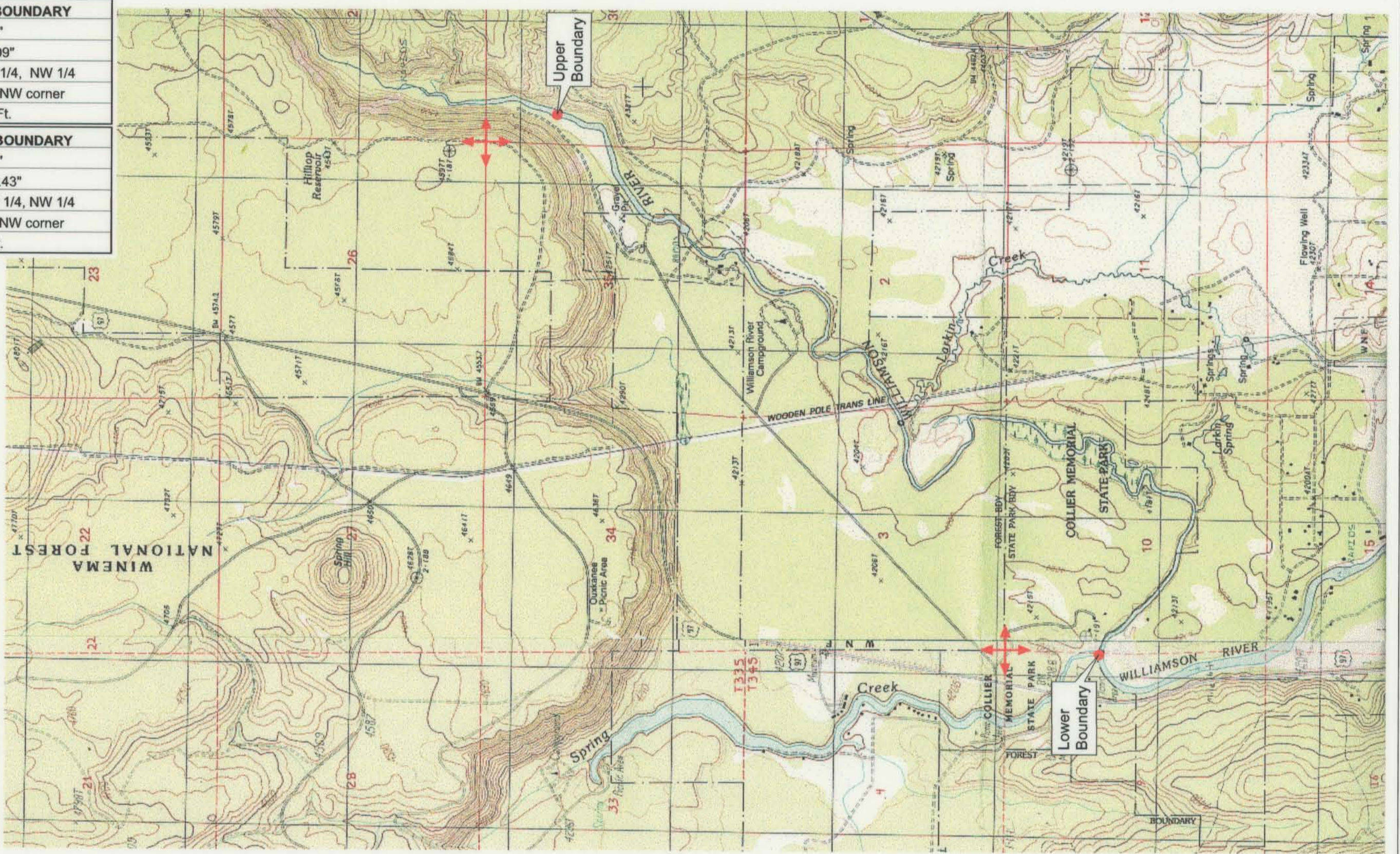


UPPER REACH BOUNDARY
Latitude: 42° 40' 16.74"
Longitude: 121° 50' 7.09"
T 33S, R 7E, S 36, SW 1/4, NW 1/4
Bearing/Distance: From NW corner S 18° 34' 28" E, 1,584.0 Ft.
LOWER REACH BOUNDARY
Latitude: 42° 38' 27.81"
Longitude: 121° 52' 33.43"
T 34S, R 7E, S 10, SW 1/4, NW 1/4
Bearing/Distance: From NW corner S 1° 55' 54" E, 1,937.7 Ft.



Source: USGS 7.5 Minute
 Quad: Solomon Butte, Fort
 Klamath.

Vertical Datum: National
 Geodetic Vertical Datum of
 1929.

Horizontal Datum: 1927 North
 American Datum.

KLAMATH ADJUDICATION
 # 628 PAGE # 016

Reach boundaries: Lower end of Kirk Canyon to Spring Creek.
 Plate 1 of 1.

RECEIVED
 OCT 01 1999
 WATER RESOURCES DEPT.
 SALEM, OREGON

Klamath Basin Water Rights Claim #628
 Department of the Interior Bureau of Indian Affairs
 Reach Name: **Williamson River #4 (WM 4)**
 Scale: 1:24,000 (Amended)

\\Lafayette\Graphics\Projects\GIS\BIA\60177.26\Topo\1117gis1.fhb