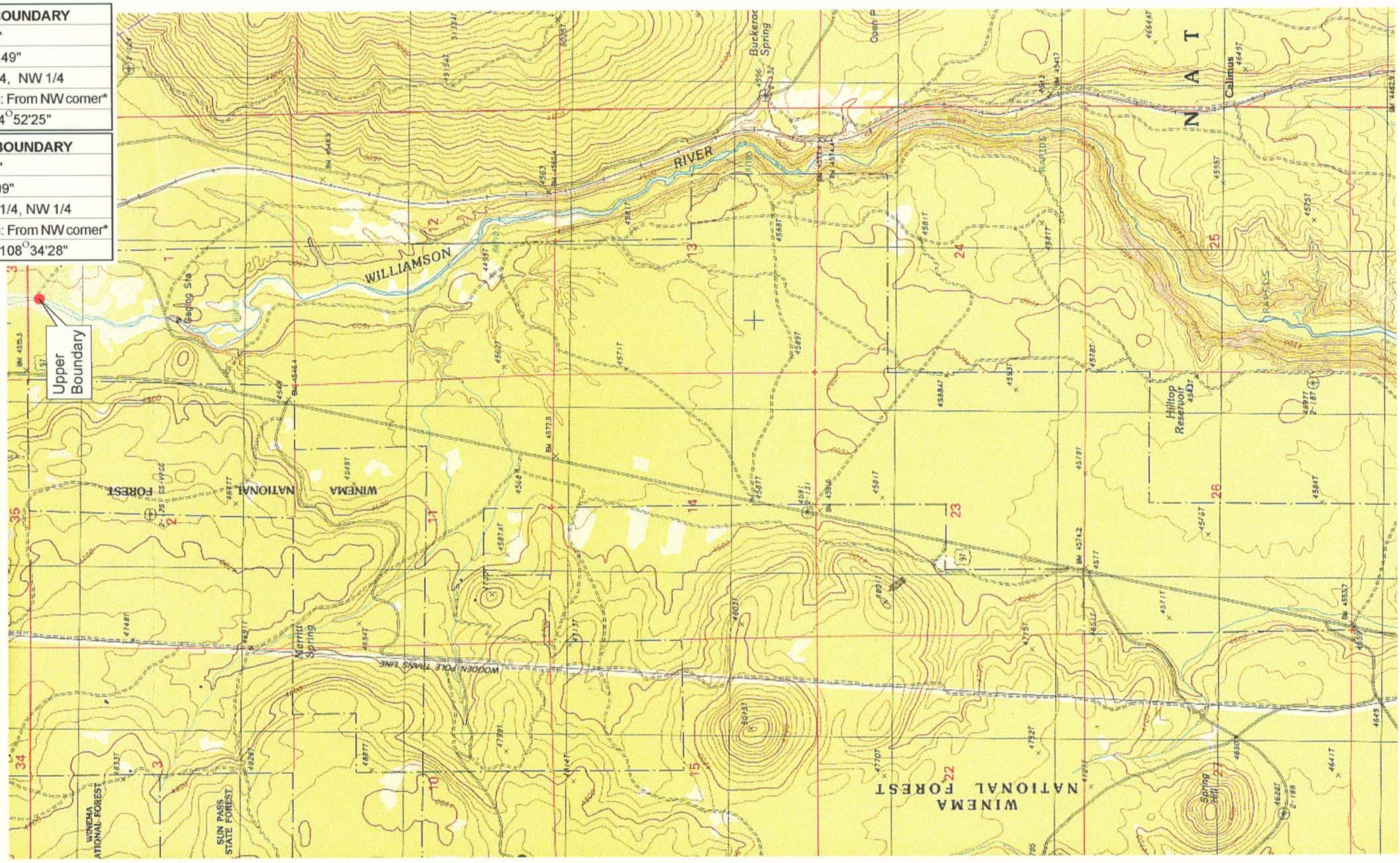


UPPER REACH BOUNDARY
Latitude: 42° 44' 52.23"
Longitude: 121° 49' 53.49"
T 33S, R 7E, S 1, NE 1/4, NW 1/4
Distance/Bearing/Azimuth: From NW corner*
S 5° 7' 35" E, 511.9m, 174° 52' 25"
LOWER REACH BOUNDARY
Latitude: 42° 40' 16.74"
Longitude: 121° 50' 7.09"
T 33S, R 7E, S 36, SW 1/4, NW 1/4
Distance/Bearing/Azimuth: From NW corner*
S 71° 25' 32" E, 482.8m, 108° 34' 28"

* See plate 1 of 1 of Williamson River #6



RECEIVED
 MAR 01 1999
 WATER RESOURCES DIVISION
 SALEM, OREGON



Source: USGS 7.5 Minute Quad: Solomon Butte.
 Vertical Datum: National Geodetic Vertical Datum of 1929.
 Horizontal Datum: 1927 North American Datum.

KLAMATH ADJUDICATION
CLAIM 629 PAGE # 05

Reach boundaries: Kirk to Lower end of Kirk Canyon.
 Plate 1 of 2.

Klamath Basin Water Rights Claim Map
 Department of the Interior Bureau of Indian Affairs
 Reach Name: **Williamson River #5**
 Scale: 1:24,000