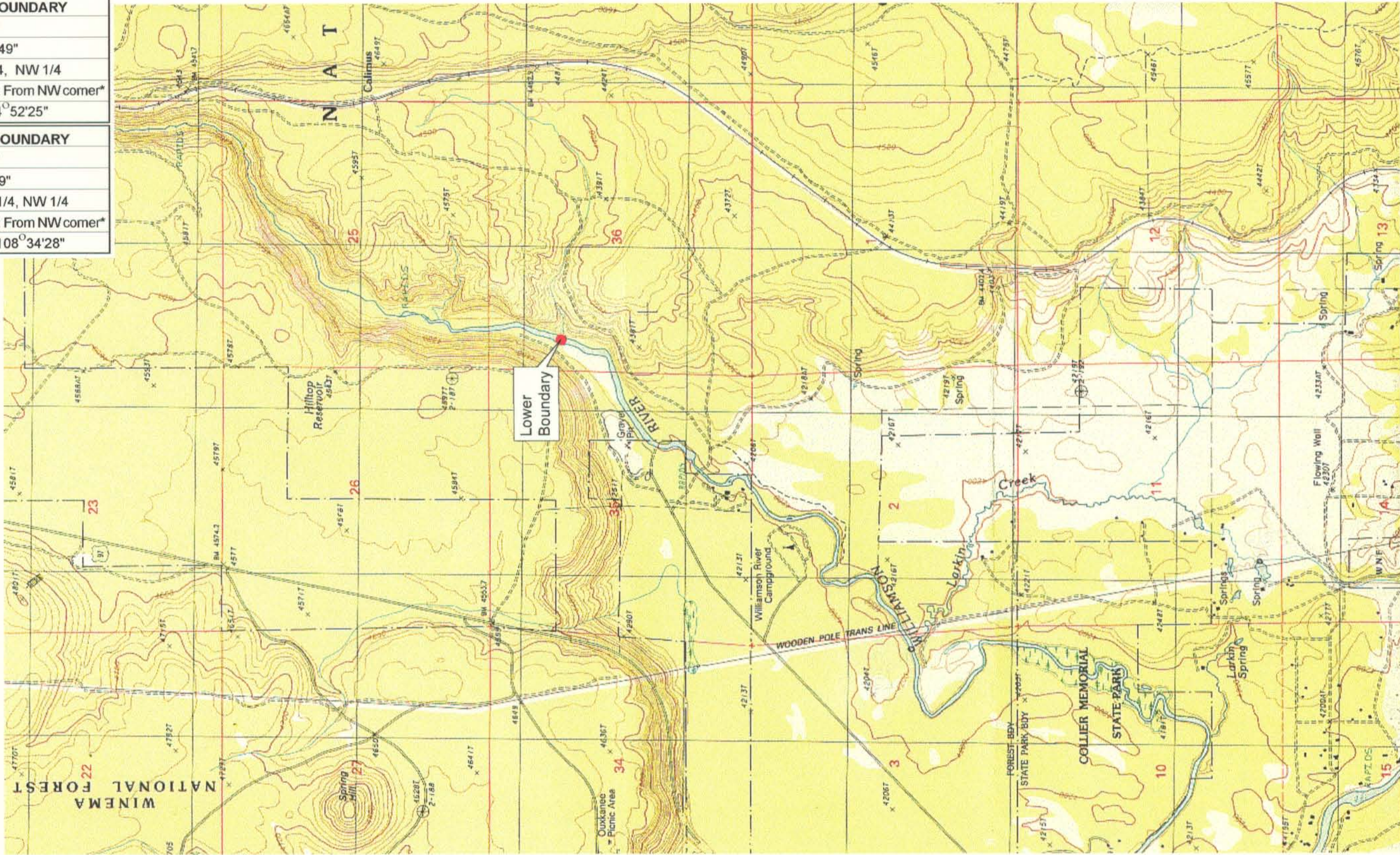


<b>UPPER REACH BOUNDARY</b>
Latitude: 42° 44' 52.23"
Longitude: 121° 49' 53.49"
T 33S, R 7E, S 1, NE 1/4, NW 1/4
Distance/Bearing/Azimuth: From NW corner*
S 5° 7' 35" E, 511.9m, 174° 52' 25"
<b>LOWER REACH BOUNDARY</b>
Latitude: 42° 40' 16.74"
Longitude: 121° 50' 7.09"
T 33S, R 7E, S 36, SW 1/4, NW 1/4
Distance/Bearing/Azimuth: From NW corner*
S 71° 25' 32" E, 482.8m, 108° 34' 28"

\* See plate 1 of 1 of Williamson River #6



**RECEIVED**  
MAR 01 1999  
WATER RESOURCES DEPT.  
SALEM, OREGON

Source: USGS 7.5 Minute Quad: Solomon Butte.  
Vertical Datum: National Geodetic Vertical Datum of 1929.  
Horizontal Datum: 1927 North American Datum.

**KLAMATH ADJUDICATION**  
**CLAIM # 6 29 PAGE # 06**

Reach boundaries: Kirk to Lower end of Kirk Canyon.  
Plate 2 of 2.

**Klamath Basin Water Rights Claim Map**  
Department of the Interior Bureau of Indian Affairs  
Reach Name: **Williamson River #5**  
Scale: 1:24,000