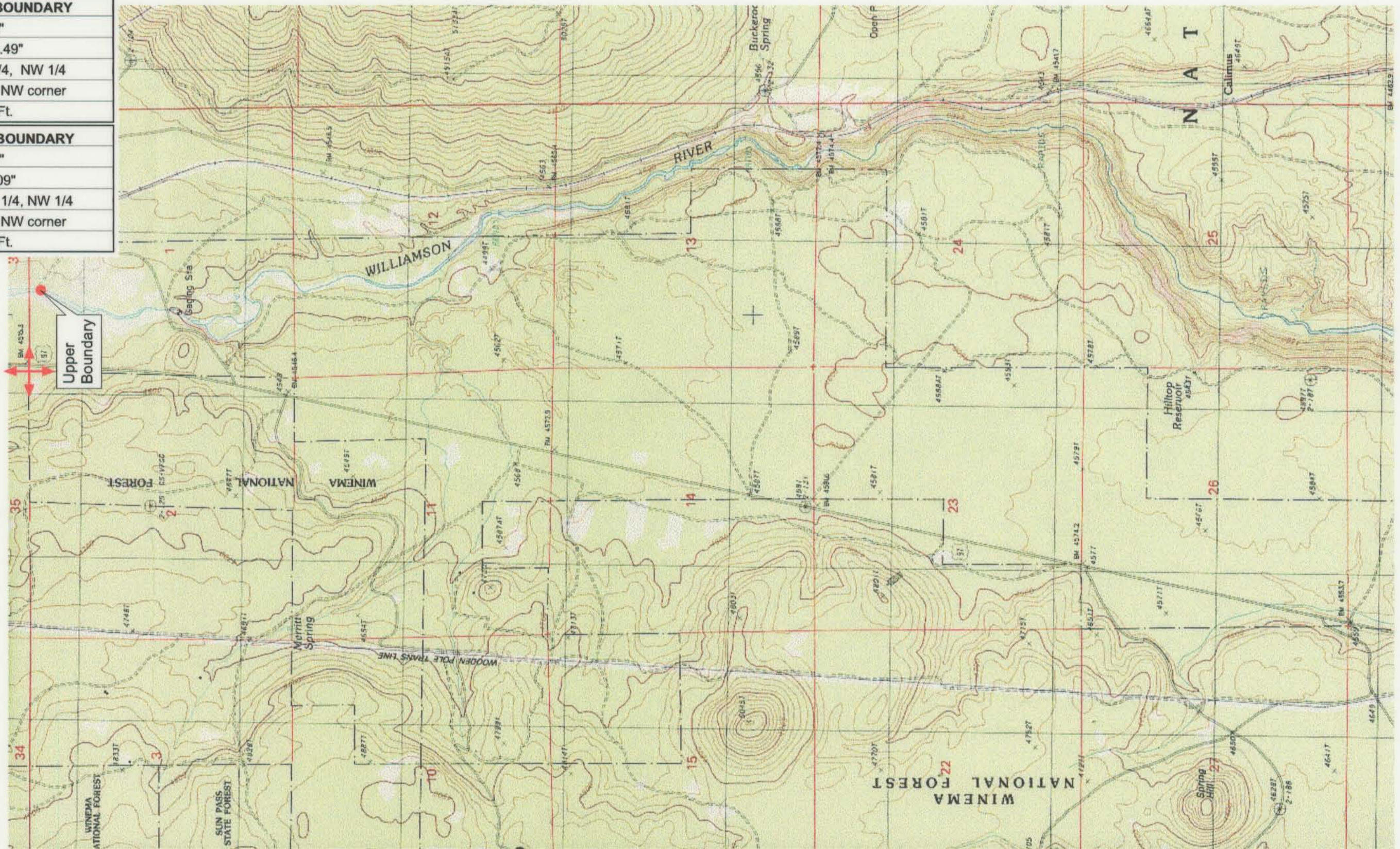


UPPER REACH BOUNDARY	
Latitude:	42° 44' 52.23"
Longitude:	121° 49' 53.49"
T 33S, R 7E, S 1, NE 1/4, NW 1/4	
Bearing/Distance: From NW corner	
S 84° 52' 25" E, 1,679.5 Ft.	
LOWER REACH BOUNDARY	
Latitude:	42° 40' 16.74"
Longitude:	121° 50' 7.09"
T 33S, R 7E, S 36, SW 1/4, NW 1/4	
Bearing/Distance: From NW corner	
S 18° 34' 28" E, 1,584.0 Ft.	



Source: USGS 7.5 Minute Quad: Solomon Butte.
 Vertical Datum: National Geodetic Vertical Datum of 1929.
 Horizontal Datum: 1927 North American Datum.

KLAMATH ADJUDICATION
CLAIM # 629 PAGE # 018

Reach boundaries: Kirk to Lower end of Kirk Canyon.
 Plate 1 of 2.

RECEIVED
OCT 01 1999
 WATER RESOURCES DEPT.
 SALEM, OREGON

Klamath Basin Water Rights Claim #629
 Department of the Interior Bureau of Indian Affairs
 Reach Name: **Williamson River #5 (WM 5)**
 Scale: 1:24,000 (Amended)

\\Lafayette\Graphics\Projects\GIS\BIA\60177.26\Topo\1117gis1.fh8