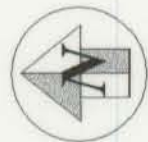
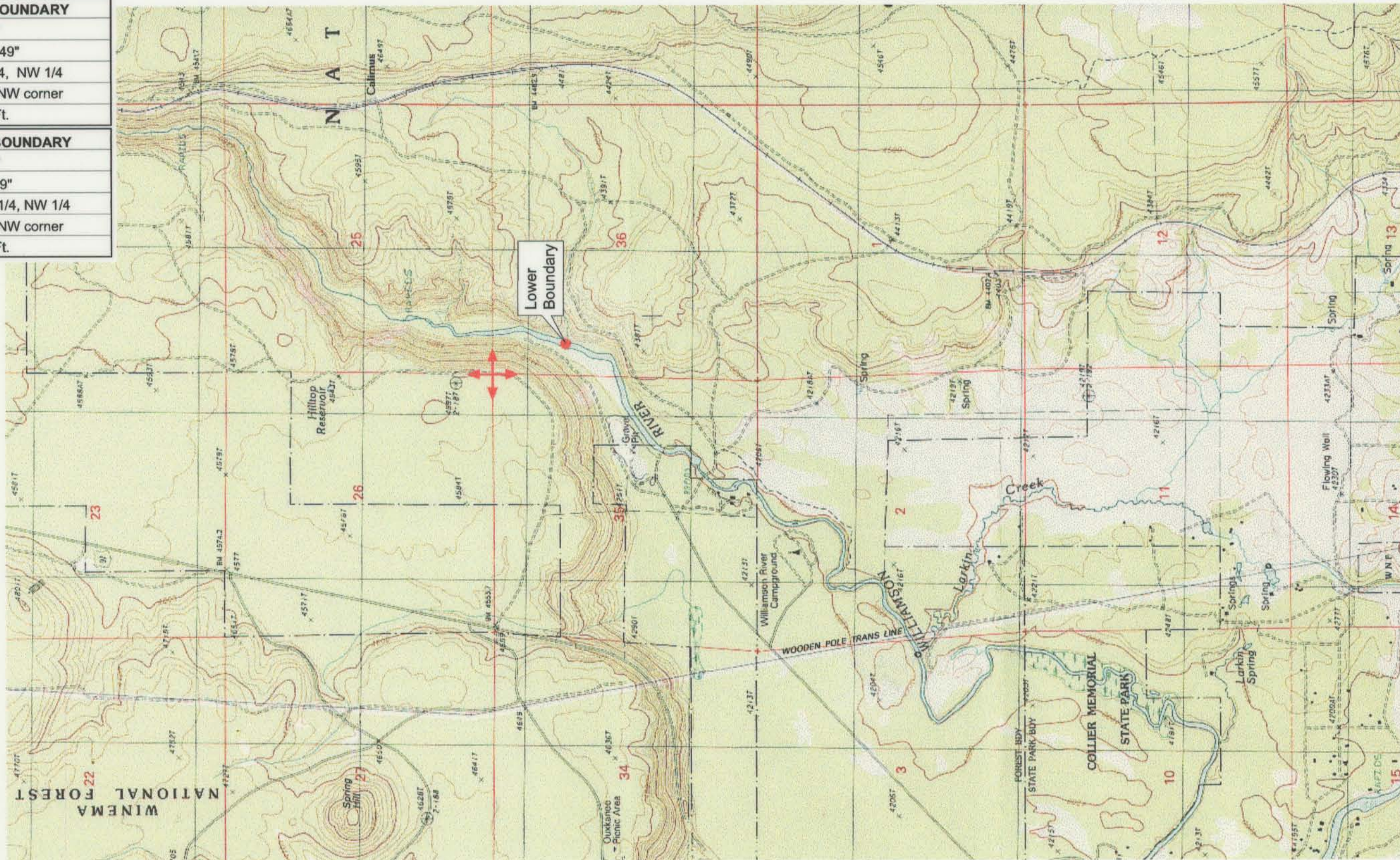


UPPER REACH BOUNDARY
Latitude: 42° 44' 52.23"
Longitude: 121° 49' 53.49"
T 33S, R 7E, S 1, NE 1/4, NW 1/4
Bearing/Distance: From NW corner S 84° 52' 25" E, 1,679.5 Ft.
LOWER REACH BOUNDARY
Latitude: 42° 40' 16.74"
Longitude: 121° 50' 7.09"
T 33S, R 7E, S 36, SW 1/4, NW 1/4
Bearing/Distance: From NW corner S 18° 34' 28" E, 1,584.0 Ft.



Source: USGS 7.5 Minute
Quad: Solomon Butte.

Vertical Datum: National
Geodetic Vertical Datum of
1929.

Horizontal Datum: 1927 North
American Datum.

KLAMATH ADJUDICATION

CLAIM # 629 PAGE # 019

Reach boundaries: Kirk to Lower end of Kirk Canyon.
Plate 2 of 2.

RECEIVED

OCT 01 1999

WATER RESOURCES DEPT.
SALEM, OREGON

Klamath Basin Water Rights Claim #629

Department of the Interior Bureau of Indian Affairs

Reach Name: **Williamson River #5 (WM 5)**

Scale: 1:24,000 (Amended)

\\Lafayette\Graphics\Projects\GIS\BIA\60177.26\Topo\1117gis1.thb