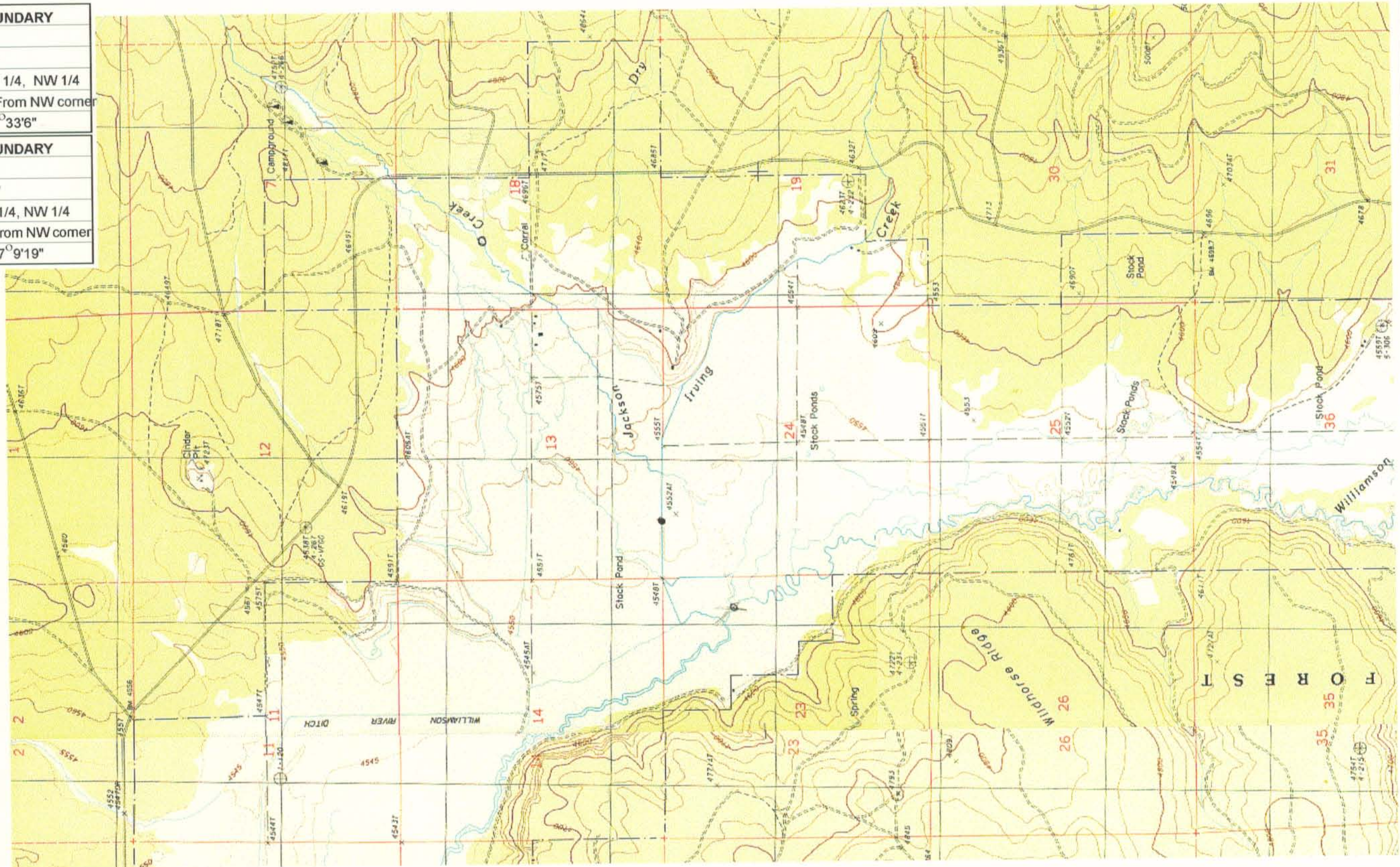


UPPER REACH BOUNDARY
Latitude: 42° 50' 42.76"
Longitude: 121° 27' 42.03"
T 31S, R 11E, S 31, NW 1/4, NW 1/4
Distance/Bearing/Azimuth: From NW corner
S 68° 26' 54" E, 475.0m, 111° 33' 6"
LOWER REACH BOUNDARY
Latitude: 42° 58' 31.43"
Longitude: 121° 32' 35.82"
T 30S, R 10E, S 16, NW 1/4, NW 1/4
Distance/Bearing/Azimuth: From NW corner
S 52° 50' 41" E, 473.6m, 127° 9' 19"



RECEIVED

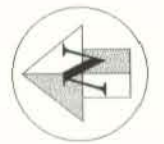
MAR 01 1999

WATER RESOURCES DEPT.
SALEM, OREGON

RECEIVED

MAR 01 19

WATER RES.
SALEM, OR.



Source: USGS 7.5 Minute Quad:
The Bull Pasture, Gordon Lake,
Wildhorse Ridge.

Vertical Datum: National Geodetic
Vertical Datum of 1929.
Horizontal Datum: 1927 North
American Datum.

KLAMATH ADJUDICATION
CLAIM 631 PAGE # 09

Reach boundaries: Deep Creek to Klamath Marsh.
Plate 3 of 4.

Klamath Basin Water Rights Claim Map
Department of the Interior Bureau of Indian Affairs
Reach Name: **Williamson River #7**
Scale: 1:24,000