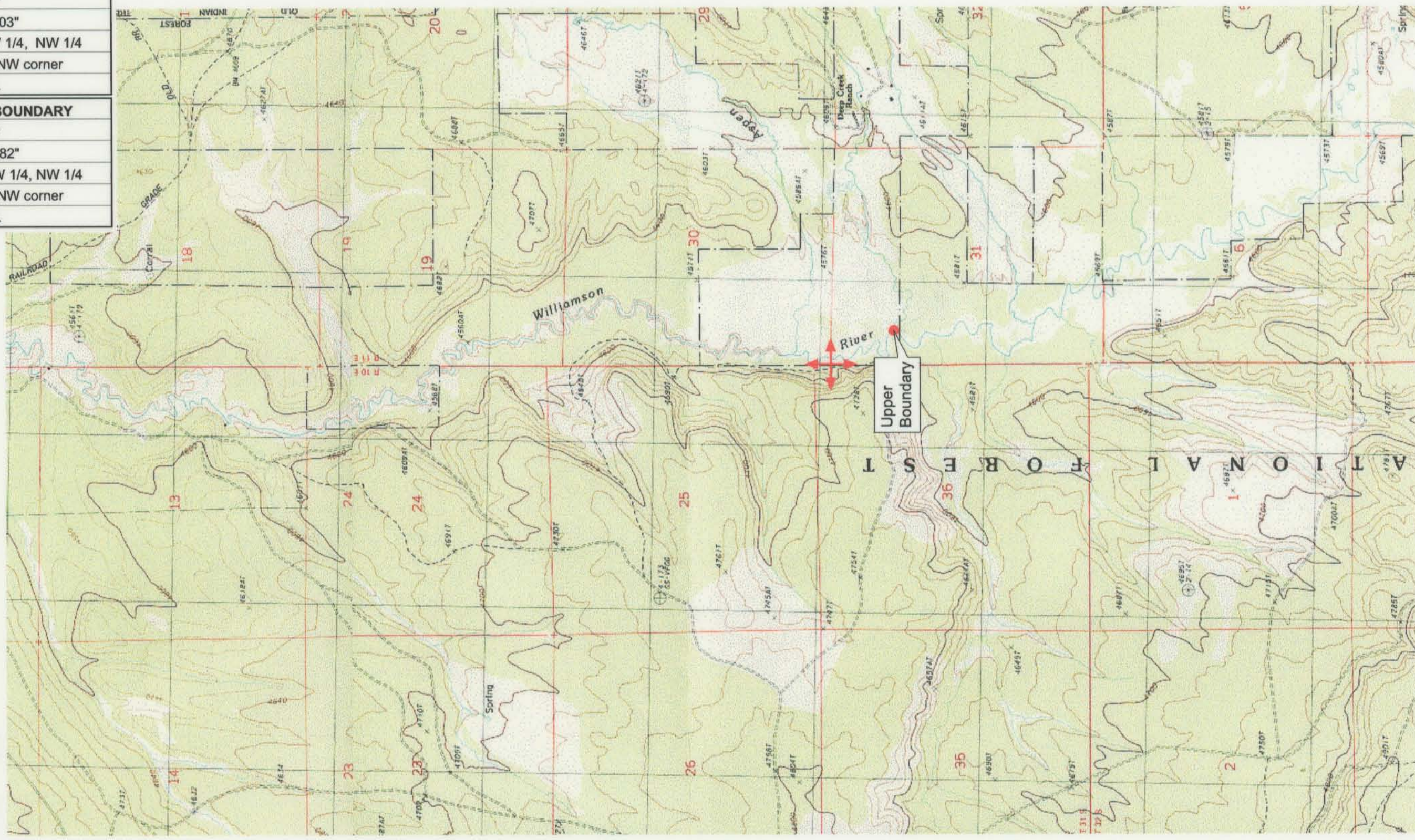



| |
|---|
| UPPER REACH BOUNDARY |
| Latitude: 42° 50' 42.76" |
| Longitude: 121° 27' 42.03" |
| T 31S, R 11E, S 31, NW 1/4, NW 1/4 |
| Bearing/Distance: From NW corner S 21°33'6" E, 1,558.4 Ft. |
| LOWER REACH BOUNDARY |
| Latitude: 42° 58' 31.43" |
| Longitude: 121° 32' 35.82" |
| T 30S, R 10E, S 16, NW 1/4, NW 1/4 |
| Bearing/Distance: From NW corner S 37°9'19" E, 1,554.0 Ft. |



Source: USGS 7.5 Minute Quad:
The Bull Pasture, Gordon Lake,
Wildhorse Ridge.

Vertical Datum: National
Geodetic Vertical Datum of 1929.
Horizontal Datum: 1927 North
American Datum.

KLAMATH ADJUDICATION
 **631** **PAGE # 021**

Reach boundaries: Deep Creek to Klamath Marsh.
Plate 1 of 4.

RECEIVED
OCT 01 1999
 WATER RESOURCES DEPT.
 SALEM, OREGON

Klamath Basin Water Rights Claim #631
 Department of the Interior Bureau of Indian Affairs
 Reach Name: **Williamson River #7 (WM 7)**
 Scale: 1:24,000 (Amended)

\\Lafayette\Graphics\Projects\GIS\BIA\60177.26\Topo\1117gis1.fh8