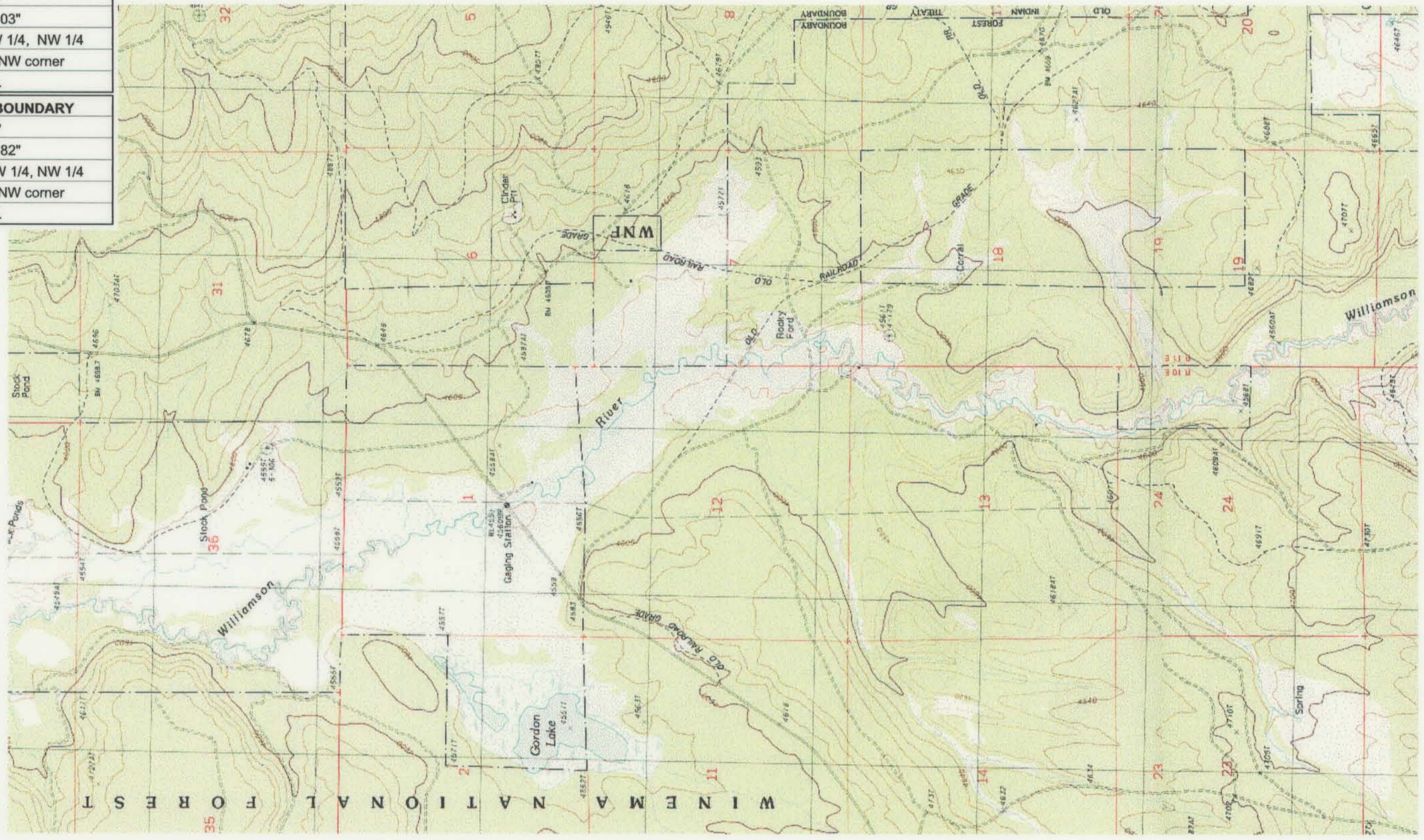


UPPER REACH BOUNDARY
Latitude: 42° 50' 42.76"
Longitude: 121° 27' 42.03"
T 31S, R 11E, S 31, NW 1/4, NW 1/4
Bearing/Distance: From NW corner S 21° 33' 6" E, 1,558.4 Ft.
LOWER REACH BOUNDARY
Latitude: 42° 58' 31.43"
Longitude: 121° 32' 35.82"
T 30S, R 10E, S 16, NW 1/4, NW 1/4
Bearing/Distance: From NW corner S 37° 9' 19" E, 1,554.0 Ft.



Source: USGS 7.5 Minute
 Quad: The Bull Pasture,
 Gordon Lake, Wildhorse Ridge.

Vertical Datum: National
 Geodetic Vertical Datum of
 1929.

Horizontal Datum: 1927 North
 American Datum.

KLAMATH ADJUDICATION
 CLAIM # **631** PAGE # **022**

Reach boundaries: Deep Creek to Klamath Marsh.
 Plate 2 of 4.

RECEIVED
 OCT 01 1999
 WATER RESOURCES DEPT.
 SALEM, OREGON

Klamath Basin Water Rights Claim #631
 Department of the Interior Bureau of Indian Affairs
 Reach Name: **Williamson River #7 (WM 7)**
 Scale: 1:24,000 (Amended)

\\Lafayette\Graphics\Projects\GIS\BIA\60177_26\Topo\1117gis1.fh8