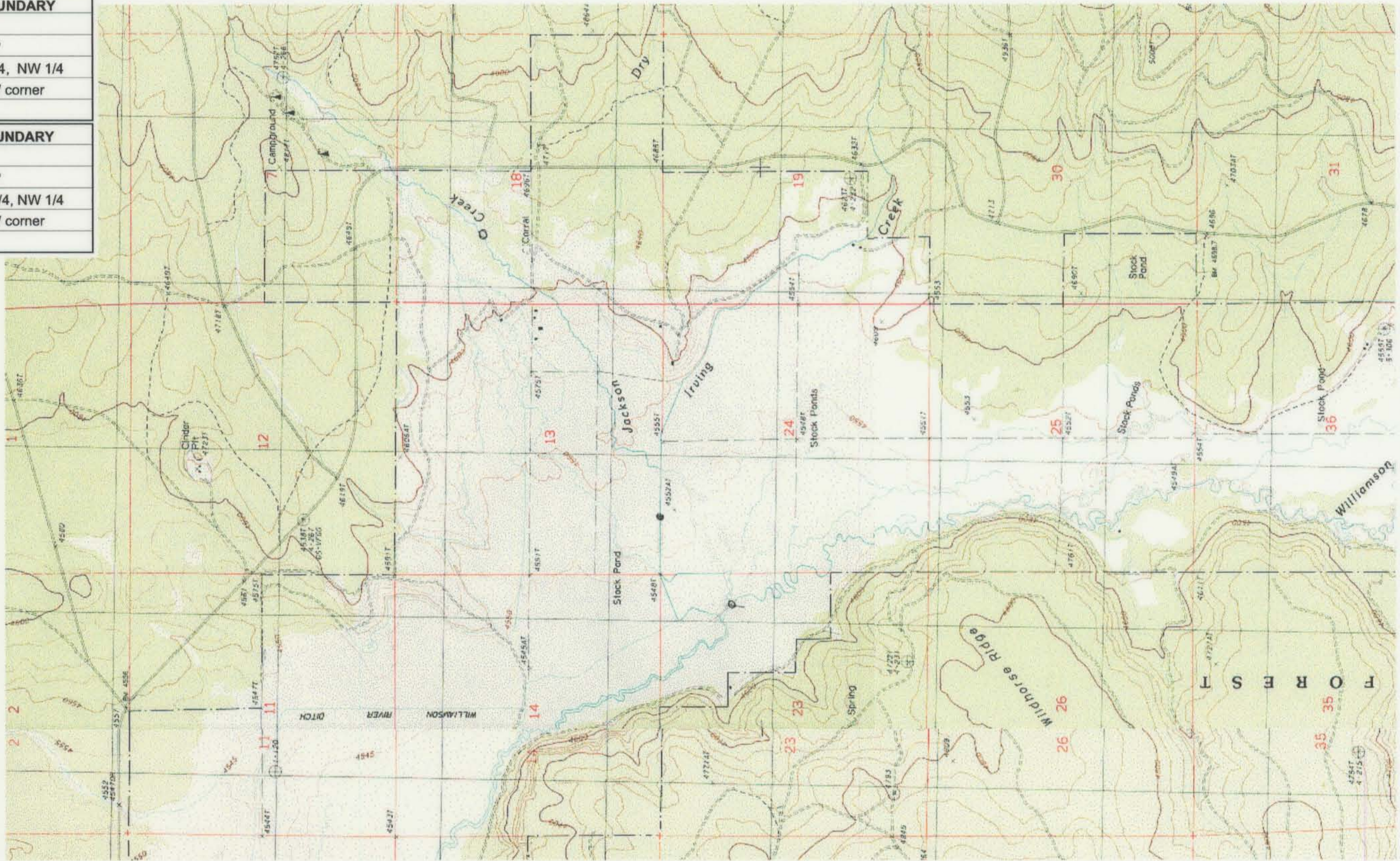


UPPER REACH BOUNDARY
Latitude: 42° 50' 42.76"
Longitude: 121° 27' 42.03"
T 31S, R 11E, S 31, NW 1/4, NW 1/4
Bearing/Distance: From NW corner S 21° 33' 6" E, 1,558.4 Ft.
LOWER REACH BOUNDARY
Latitude: 42° 58' 31.43"
Longitude: 121° 32' 35.82"
T 30S, R 10E, S 16, NW 1/4, NW 1/4
Bearing/Distance: From NW corner S 37° 9' 19" E, 1,554.0 Ft.



Source: USGS 7.5 Minute Quad:
The Bull Pasture, Gordon Lake,
Wildhorse Ridge.

Vertical Datum: National Geodetic
Vertical Datum of 1929.
Horizontal Datum: 1927 North
American Datum.

KLAMATH ADJUDICATION
CLAIM # **631** PAGE # **023**

Reach boundaries: Deep Creek to Klamath Marsh.
Plate 3 of 4.

RECEIVED
OCT 01 1999
WATER RESOURCES DEPT.
SALEM, OREGON

Klamath Basin Water Rights Claim #631
Department of the Interior Bureau of Indian Affairs
Reach Name: **Williamson River #7 (WM 7)**
Scale: 1:24,000 (Amended)

\\Lafayette\Graphics\Projects\GIS\BIA\60177.26\Topo\1117gis1.fh8