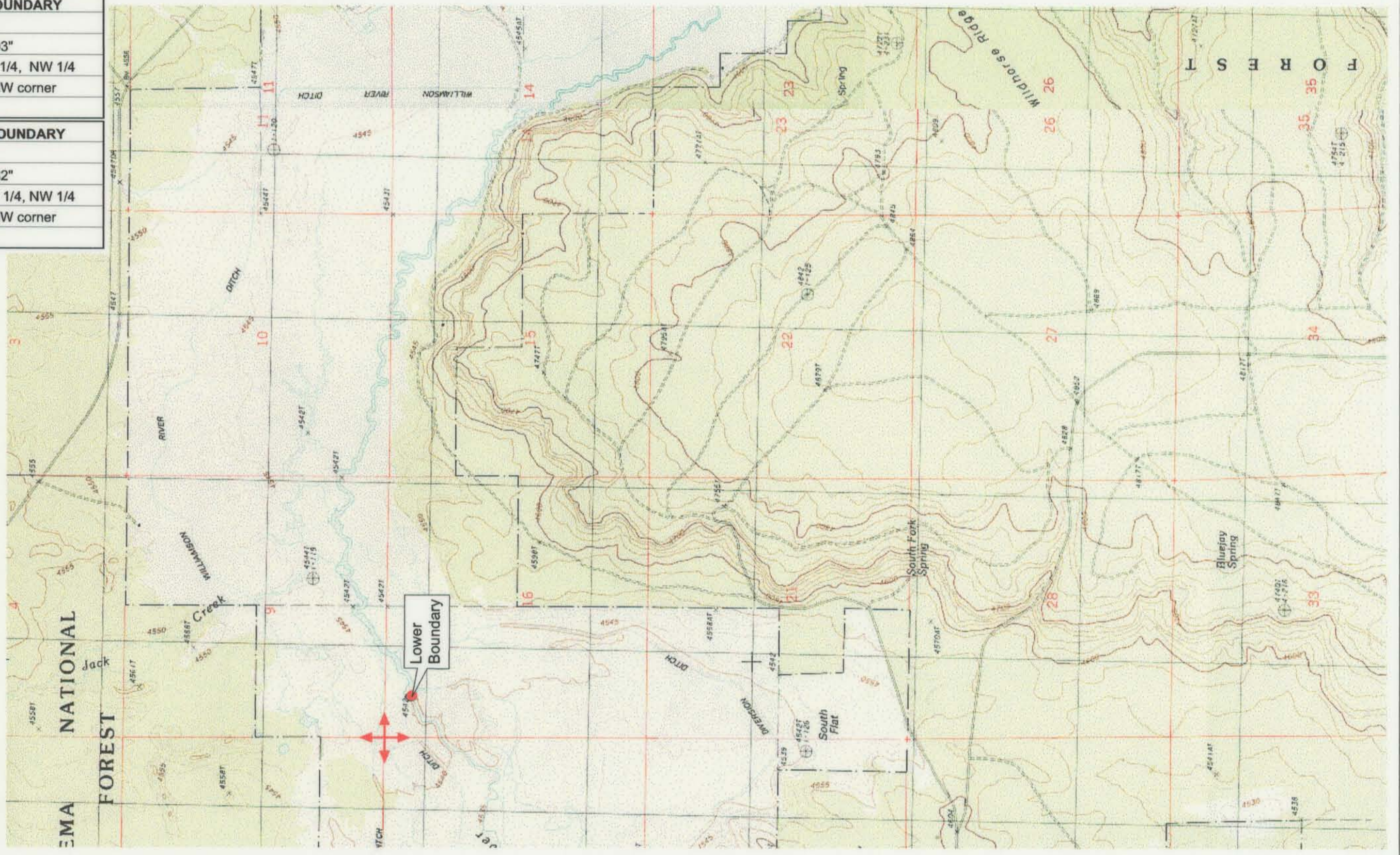


<b>UPPER REACH BOUNDARY</b>
Latitude: 42° 50' 42.76"
Longitude: 121° 27' 42.03"
T 31S, R 11E, S 31, NW 1/4, NW 1/4
Bearing/Distance: From NW corner S 21°33'6" E, 1,558.4 Ft.
<b>LOWER REACH BOUNDARY</b>
Latitude: 42° 58' 31.43"
Longitude: 121° 32' 35.82"
T 30S, R 10E, S 16, NW 1/4, NW 1/4
Bearing/Distance: From NW corner S 37°9'19" E, 1,554.0 Ft.



Source: USGS 7.5 Minute Quad:  
The Bull Pasture, Gordon Lake,  
Wildhorse Ridge.

Vertical Datum: National Geodetic  
Vertical Datum of 1929.  
Horizontal Datum: 1927 North  
American Datum.

**KLAMATH ADJUDICATION**  
CLAIM # **631** PAGE # **024**

Reach boundaries: Deep Creek to Klamath Marsh.  
Plate 4 of 4.

**RECEIVED**  
OCT 01 1999  
WATER RESOURCES DEPT.  
SALEM, OREGON

Klamath Basin Water Rights Claim #631  
Department of the Interior Bureau of Indian Affairs  
Reach Name: **Williamson River #7 (WM 7)**  
Scale: 1:24,000 (Amended)