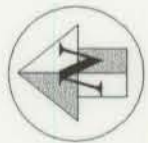
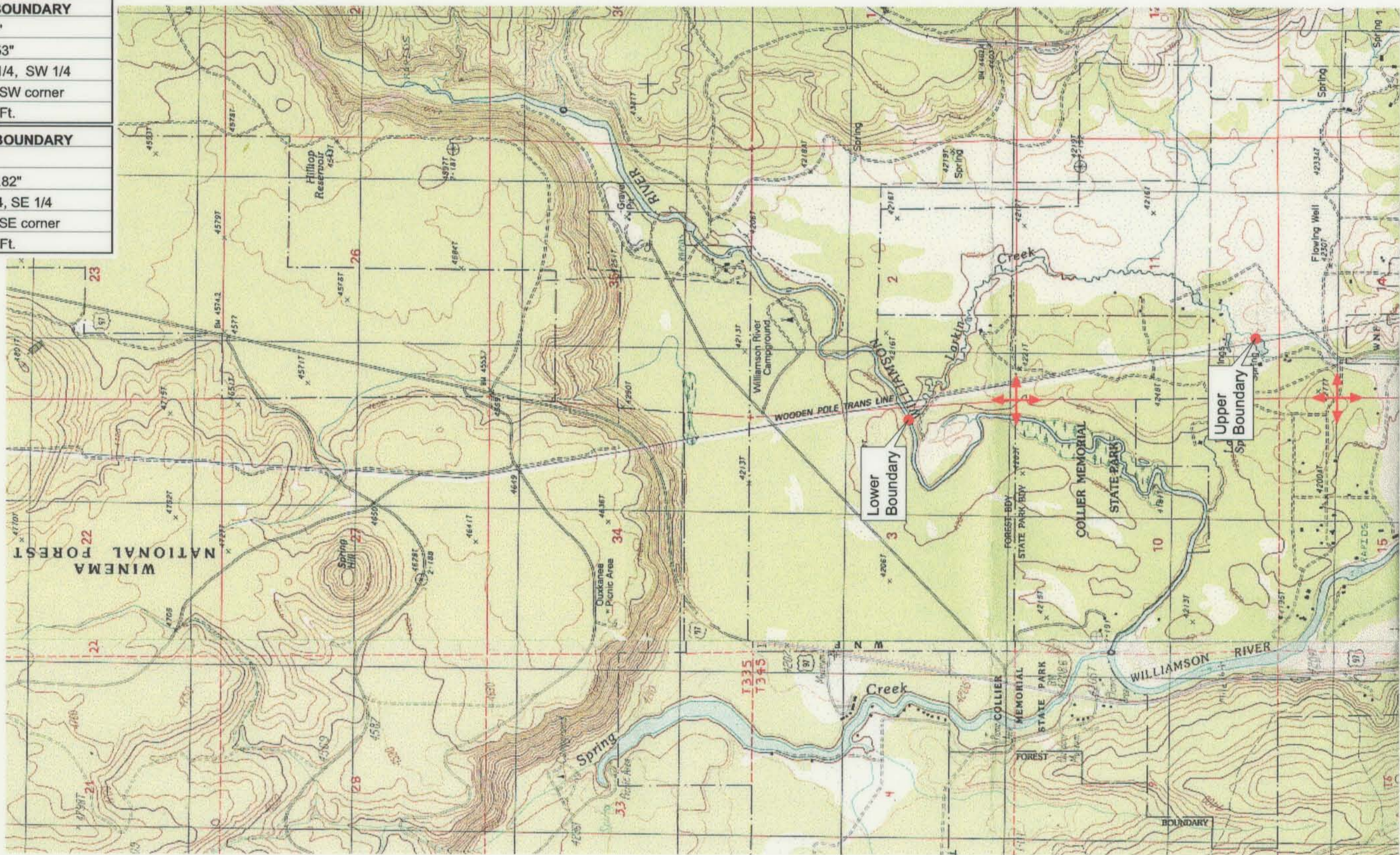


UPPER REACH BOUNDARY
Latitude: 42° 37' 59.01"
Longitude: 121° 51' 7.53"
T 34S, R 7E, S 11, SW 1/4, SW 1/4
Bearing/Distance: From SW corner N 68° 23' 15" E, 1,272.6 Ft.
LOWER REACH BOUNDARY
Latitude: 42° 39' 7.97"
Longitude: 121° 51' 30.82"
T 34S, R 7E, S 3, NE 1/4, SE 1/4
Bearing/Distance: From SE corner N 15° 28' 39" W, 2,192.4 Ft.



Source: USGS 7.5 Minute Quad: Solomon Butte, Fort Klamath.

Vertical Datum: National Geodetic Vertical Datum of 1929.
Horizontal Datum: 1927 North American Datum.

KLAMATH ADJUDICATION
CLAIM # 634 PAGE # 015

Reach: Larkin Creek.
Plate 1 of 1.

RECEIVED

OCT 01 1999

WATER RESOURCES DEPT.
SALEM, OREGON

Klamath Basin Water Rights Claim #634
 Department of the Interior Bureau of Indian Affairs
 Reach Name: **Williamson River #10 (WM 10)**
 Scale: 1:24,000 (Amended)

\\Lafayette\Graphics\Projects\GIS\BIA\60177.26\Topo\1117gis1.fh8