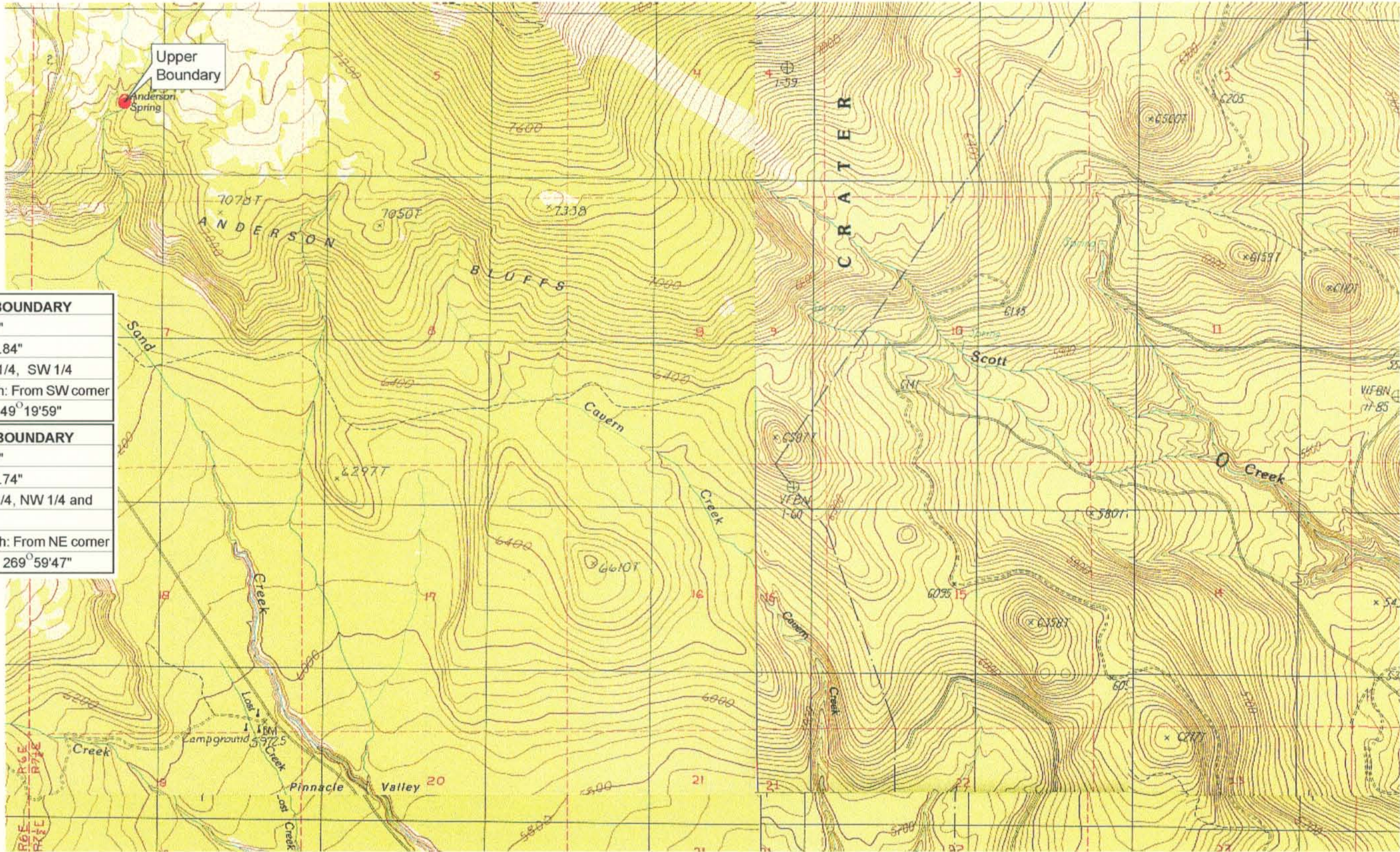


RECEIVED

MAR 01 1999

WATER RESOURCES DEPT.  
SALEM, OREGON



UPPER REACH BOUNDARY	
Latitude:	42° 54' 48.78"
Longitude:	122° 02' 50.84"
T 31S, R 7.5E, S 6, NE 1/4, SW 1/4	
Distance/Bearing/Azimuth: From SW corner N 49° 19' 59" E, 633.3m, 49° 19' 59"	
LOWER REACH BOUNDARY	
Latitude:	42° 52' 42.53"
Longitude:	121° 48' 27.74"
T 31S, R 8E, S 19, NE 1/4, NW 1/4 and NW 1/4, NE 1/4	
Distance/Bearing/Azimuth: From NE corner S 89° 59' 47" W, 775.6m, 269° 59' 47"	



Source: USGS 7.5 Minute  
Quad: Crater Lake East, Sun  
Pass, Fuego, Lenz, Pothole  
Butte, Maklaks Crater.

Vertical Datum: National  
Geodetic Vertical Datum of  
1929.  
Horizontal Datum: 1927 North  
American Datum.

**KLAMATH ADJUDICATION**  
**CLAIM # 635 PAGE # 07**

Reach: Sand Creek.  
Plate 1 of 4.

**Klamath Basin Water Rights Claim Map**  
Department of the Interior Bureau of Indian Affairs  
Reach Name: **Williamson River #11**  
Scale: 1:24,000