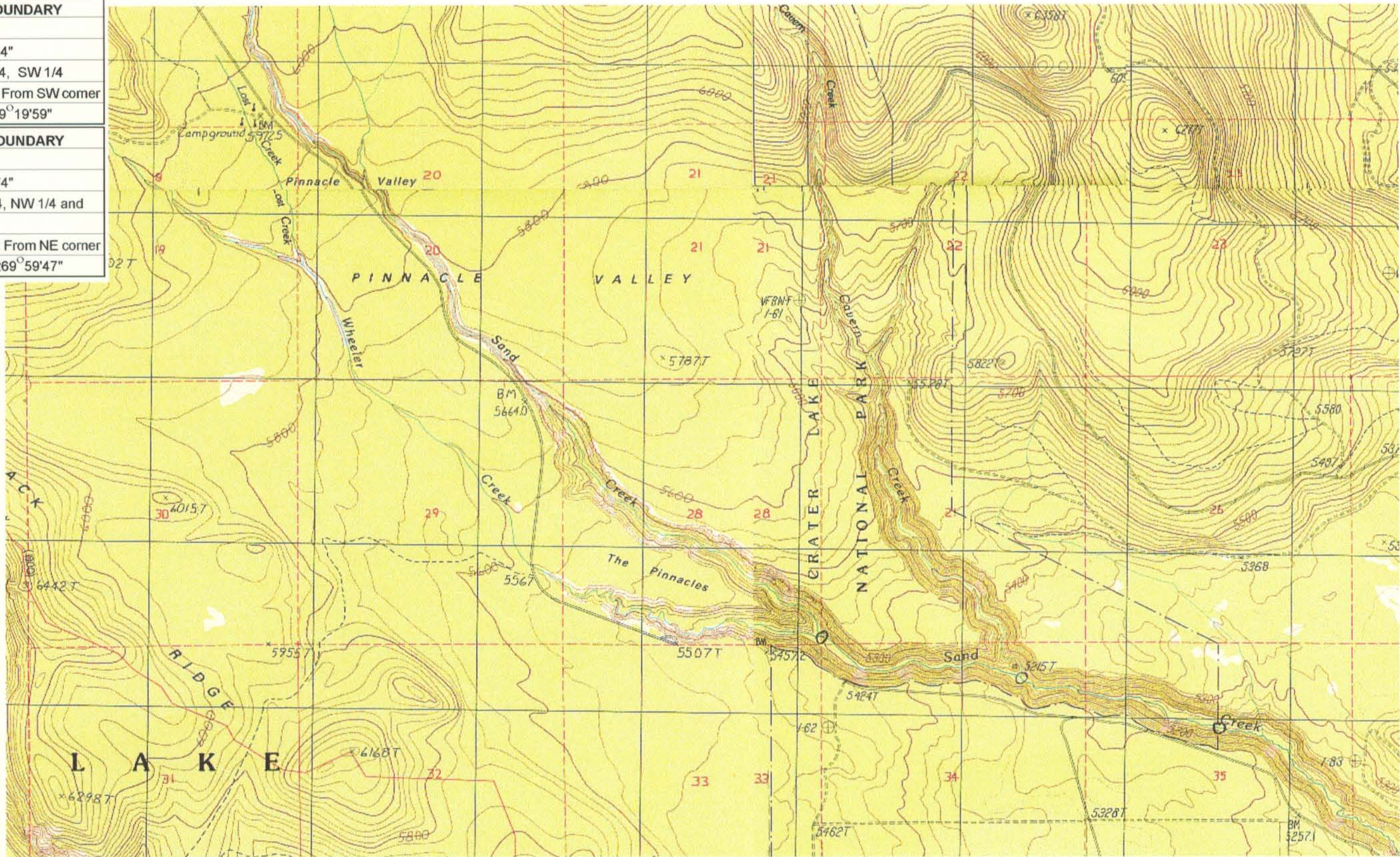


UPPER REACH BOUNDARY
Latitude: 42° 54' 48.78"
Longitude: 122° 02' 50.84"
T 31S, R 7.5E, S 6, NE 1/4, SW 1/4
Distance/Bearing/Azimuth: From SW corner N 49° 19' 59" E, 633.3m, 49° 19' 59"
LOWER REACH BOUNDARY
Latitude: 42° 52' 42.53"
Longitude: 121° 48' 27.74"
T 31S, R 8E, S 19, NE 1/4, NW 1/4 and NW 1/4, NE 1/4
Distance/Bearing/Azimuth: From NE corner S 89° 59' 47" W, 775.6m, 269° 59' 47"



RECEIVED

MAR 01 1999

WATER RESOURCES DEPT.
SALEM, OREGON



Source: USGS 7.5 Minute
Quad: Crater Lake East, Sun
Pass, Fuego, Lenz, Pothole
Butte, Maklaks Crater.

Vertical Datum: National
Geodetic Vertical Datum of
1929.
Horizontal Datum: 1927 North
American Datum.

KLAMATH ADJUDICATION
CLAIM # **635** PAGE # **08**

Reach: Sand Creek.
Plate 2 of 4.

Klamath Basin Water Rights Claim Map
Department of the Interior Bureau of Indian Affairs
Reach Name: **Williamson River #11**
Scale: 1:24,000