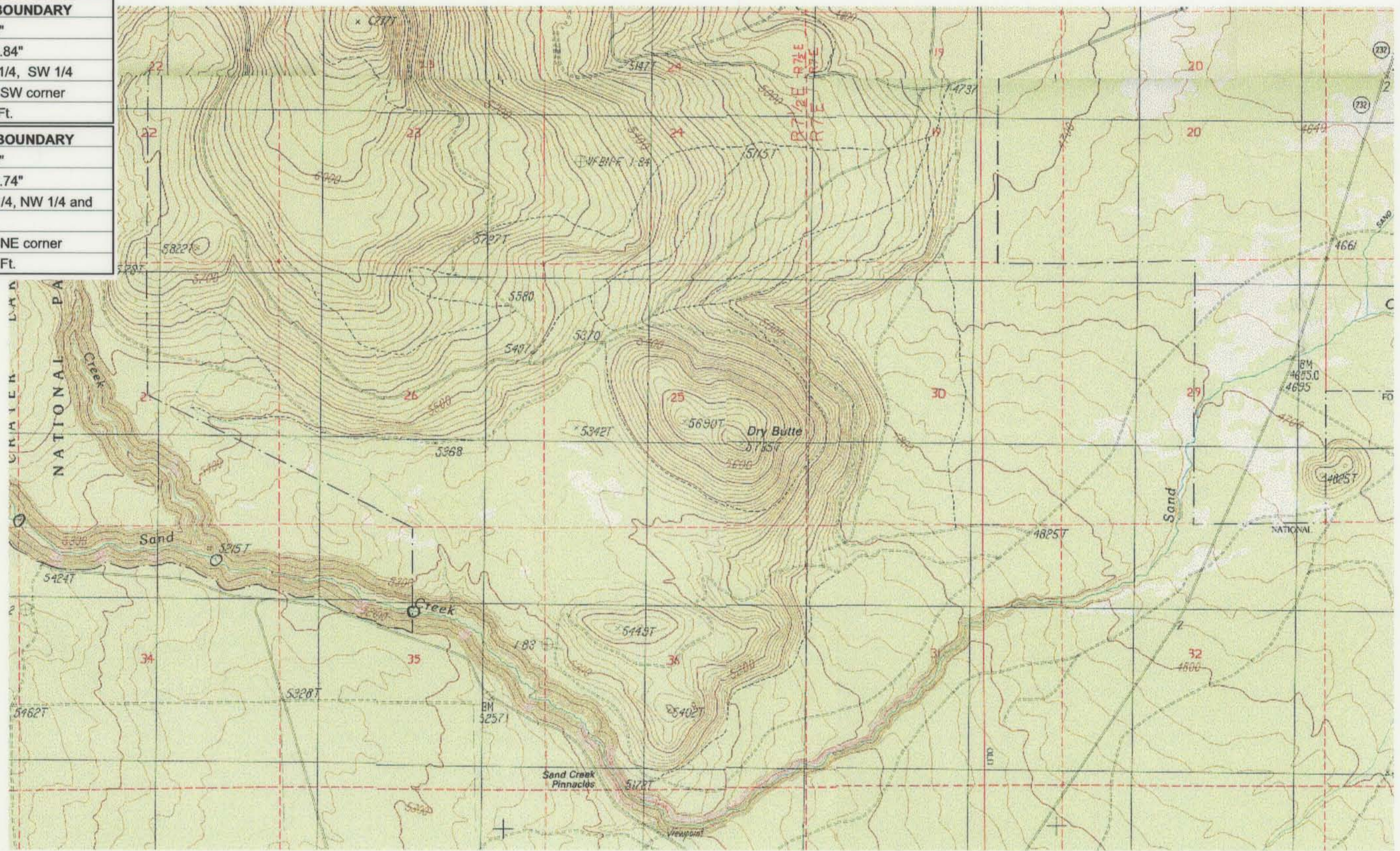


UPPER REACH BOUNDARY
Latitude: 42° 54' 48.78"
Longitude: 122° 02' 50.84"
T 31S, R 7.5E, S 6, NE 1/4, SW 1/4
Bearing/Distance: From SW corner N 49° 19' 59" E, 2,077.8 Ft.
LOWER REACH BOUNDARY
Latitude: 42° 52' 42.53"
Longitude: 121° 48' 27.74"
T 31S, R 8E, S 19, NE 1/4, NW 1/4 and NW 1/4, NE 1/4
Bearing/Distance: From NE corner S 89° 59' 47" W, 2,544.8 Ft.



Source: USGS 7.5 Minute
 Quad: Crater Lake East, Sun
 Pass, Fuego, Lenz, Pothole
 Butte, Maklaks Crater.

Vertical Datum: National
 Geodetic Vertical Datum of
 1929.

Horizontal Datum: 1927 North
 American Datum.

KLAMATH ADJUDICATION
CLAIM # 635 PAGE # 023

Reach: Sand Creek.
 Plate 3 of 4.

RECEIVED

OCT 01 1999

WATER RESOURCES DEPT.
 SALEM, OREGON

Klamath Basin Water Rights Claim #635
 Department of the Interior Bureau of Indian Affairs
 Reach Name: **Williamson River #11 (WM 11)**
 Scale: 1:24,000 (Amended)

\\Lafayette\Graphics\Projects\GIS\BIA\60177.26\Topo\1117gis1.h8